

STONE



*Royal Earlswood Park RH1*

£500,000

*“At Stone, we’re passionate about  
the unique and awe-inspiring  
architectural elements that transform  
houses into dream homes.”*

---

*The Stone Family*





Set within the historic grandeur of Victoria Court, once the Royal Earlswood Hospital and now a striking Grade II-listed building, this exceptional first-floor apartment offers a rare opportunity to live in one of Surrey's most iconic residences.

Occupying a commanding position within the South Wing, the apartment spans over 1300 sq ft and is bathed in natural light thanks to soaring ceilings and expansive traditional windows that echo the building's original design. The sense of space is immediately striking, particularly in the generous reception room with its deep bay window and elegant proportions.

Here, modern living blends effortlessly with period charm - feature panelling, herringbone wood flooring, and neutral interiors provide a serene canvas, while double doors from the hallway heighten the sense of grandeur.

The kitchen is a contemporary showpiece: sleek charcoal handleless cabinetry, stone marble-effect worktops, and a central island with a breakfast bar create a highly sociable setting, perfect for entertaining or relaxed day-to-day living. A panelled window seat in the traditional bay window offers a quiet reading nook or morning coffee perch, made even more atmospheric by a statement modern pendant light and hexagonal tiled flooring.





Accommodation includes a spacious principal bedroom with built-in wardrobes and a luxurious en suite shower room, while the second double bedroom is equally generous and flooded with light. A beautifully styled family bathroom with distinctive tiling and a deep luxury bath adds further appeal. The additional study, which can also function as a third single bedroom or nursery, is ideal for today's flexible lifestyle needs.

Beyond the apartment, life in Royal Earlswood Park is truly special. A tree-lined private entrance leads residents into a leafy, secluded setting, with manicured shared lawns, mature trees, and a palpable sense of peace and exclusivity. On-site amenities are first-class: a residents' swimming pool, gym, and library offer wellness, leisure, and quiet retreat within walking distance of your front door.

Originally opened in 1847 and steeped in regal heritage, the building's architecture speaks volumes of its prestigious past, with its foundation stone laid by Prince Albert and royal charter granted by Queen Victoria herself. Today, the beautifully restored structure stands as the centrepiece of Royal Earlswood Park, now a vibrant and luxurious residential enclave.







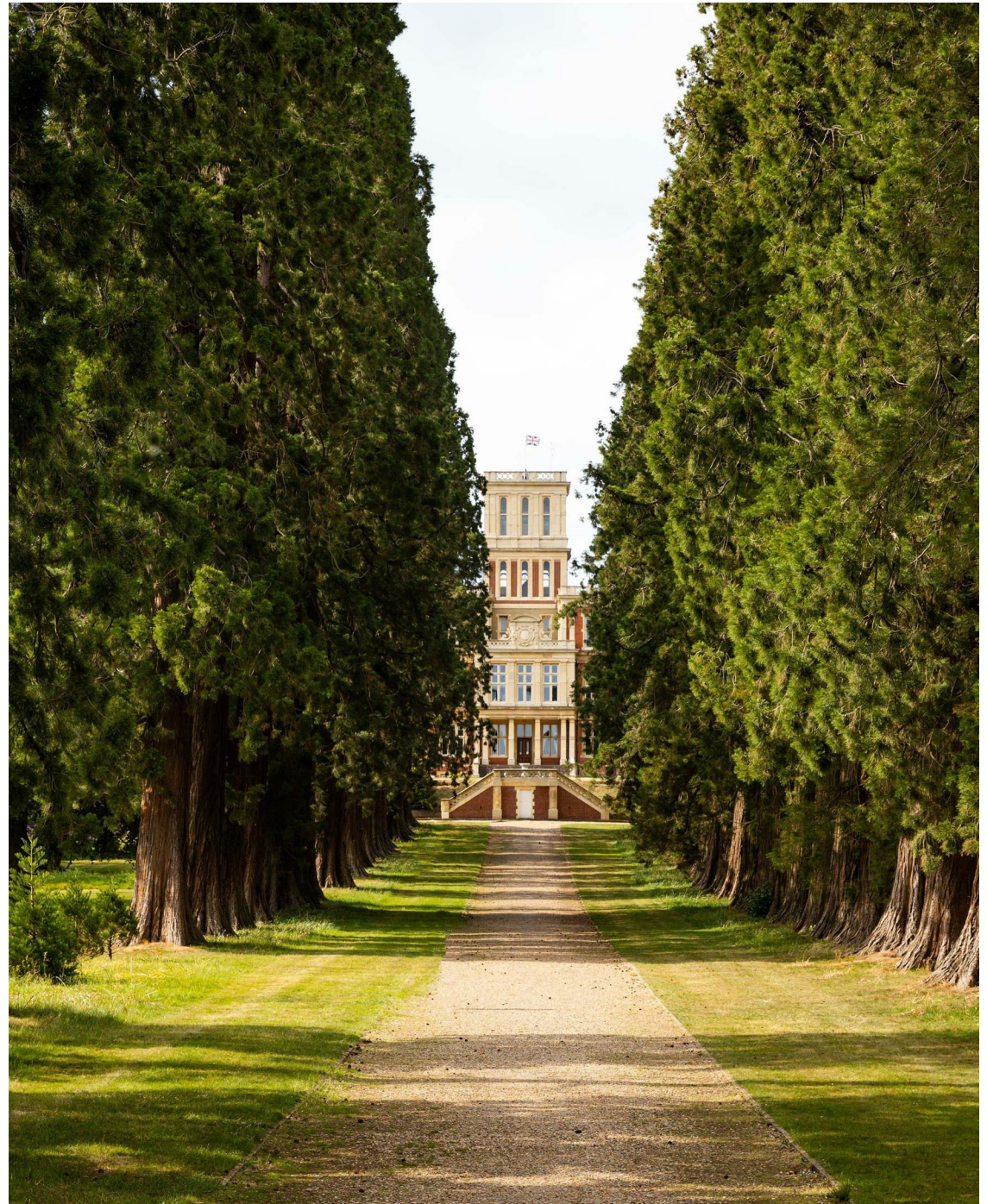




Set within a beautifully restored historic development just moments from the open green space of Earlswood Common, residents enjoy a leafy and peaceful setting surrounded by nature; The area is ideal for walkers and nature lovers, with lakes, woodlands, and scenic trails right on the doorstep, including the picturesque Earlswood Common Circular Walk and links to longer routes like the Greensand Way.

Commuters are exceptionally well served here. Earlswood station is within walking distance, offering fast and direct services to London, Gatwick, and the South Coast. Redhill station, just over a mile away, expands travel options further with additional lines. For those travelling by car, the M25 and M23 are within a 10 minute drive, and Gatwick Airport is conveniently close, making this an ideal base for both business and leisure travel.

Perfectly positioned between Redhill and Reigate, Royal Earlswood Park is around 2 miles from Reigate's historic high street and just over a mile from Redhill's town centre, combining the charm of village-style living with easy access to shops, restaurants, and schools. Whatever you're seeking, this well-connected, characterful location delivers the best of both worlds.

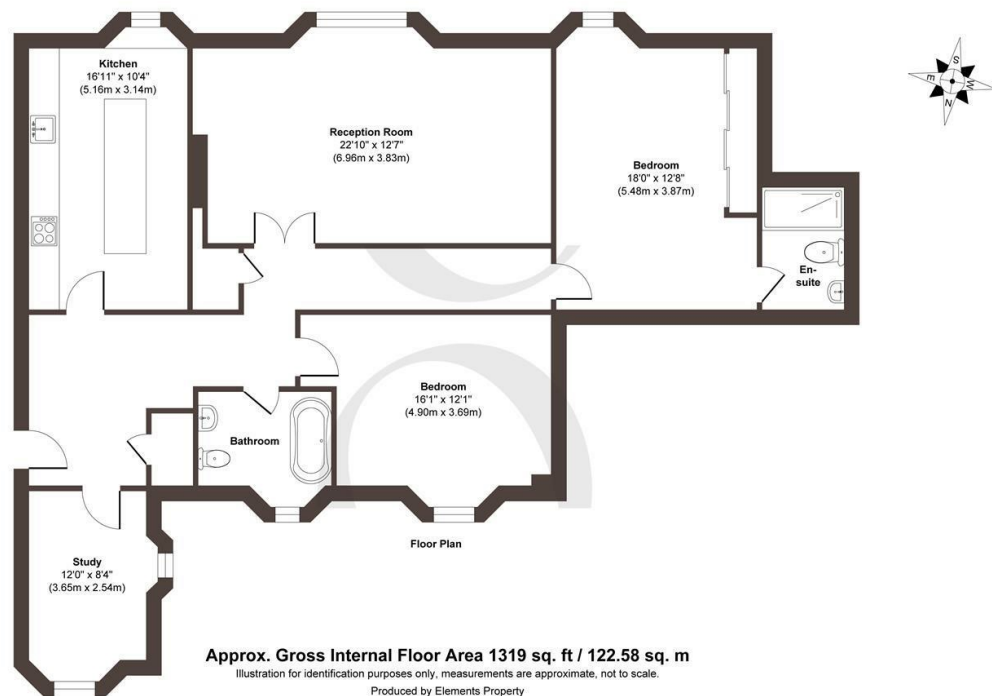












STONE

## The Details

- Spacious two bedroom luxury apartment
- Within Victoria Court, the iconic Grade II-listed heart of Royal Earlswood Park
- Soaring ceilings and expansive window bays, striking interiors, timeless panelling, and generous room proportions throughout
- Sleek modern kitchen and contemporary bathrooms
- Additional study or a third bedroom – ideal as a home office or nursery
- Resident's gym, swimming pool and library
- Parking is made easy with allocated residents' bays and ample visitor spaces

Size  
 Approx 1319.00 sq ft

Energy Performance Certificate (EPC)  
 Rating D

Council Tax Band  
 F



# STONE

## Let's *Talk*

01737 301 557

[hello@stoneestateagents.co.uk](mailto:hello@stoneestateagents.co.uk)

[stoneestateagents.co.uk](https://stoneestateagents.co.uk)

The particulars above are a guide, not an offer or contract. Descriptions photographs and plans are not statements or representations of fact. Measurements are approximate and not to scale. Prospective purchasers must verify the accuracy of the information within the particulars. Stone does not give any representations or warranties; nor represent the Seller legally. Stone has no liability, for any costs, losses or expenses incurred by the Seller or a prospective buyer relating to the sales and buying transaction. Our Sales Disclaimer, trading names and privacy policy on how your data is processed and used is found in full on our website in our Privacy Statement.

© Stone Estate Agents 2023 All rights Reserved