

STONE



Upper Harestone CR3

£1,850,000

*“At Stone, we’re passionate about
the unique and awe-inspiring
architectural elements that transform
houses into dream homes.”*

The Stone Family



A modernist masterpiece hidden on the leafy slopes of the Harestone Valley. Wildwood is a rare fusion of architecture and landscape – bold, warm, and completely private, wrapped in 1.5 acres of mature, landscaped grounds.

Set back from the road along a winding driveway, the house was reimagined by Addo Design and finished with contemporary Ecoscape cladding under a mono-pitched roof. Floor-to-ceiling glazing and wide sliding doors frame uninterrupted west-facing views across the gardens, flooding the space with natural light throughout the day.

Inside, it's all about space and flow. At the heart of the home is a vast open-plan kitchen and living space with dual-aspect sliding doors and underfloor heating – the kind of room you'll never want to leave. Bespoke oak cabinetry in a fresh white finish is offset by a deep blue island, quartz worktops, and a suite of integrated appliances including a wine fridge, boiling water tap, and American-style fridge/freezer.

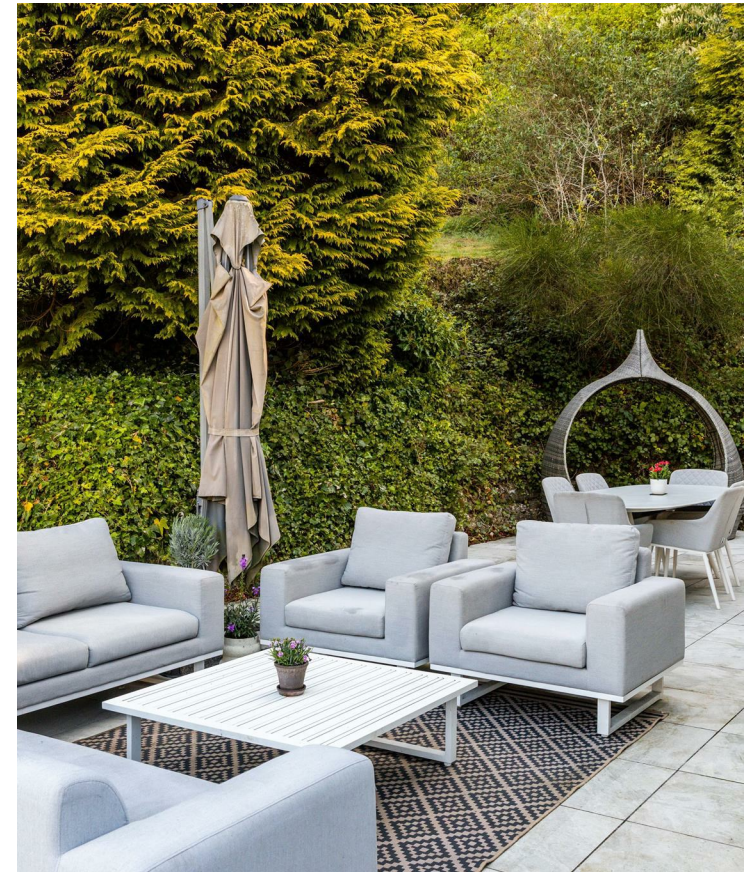


There's oak parquet in a herringbone pattern throughout the ground floor (bar the study), remote-controlled blinds to every window, and a separate reception room with its own kitchen and a curved conservatory – currently used as a self-contained space for a relative, but easily integrated back into the main house if needed.

Upstairs, the principal suite is pure calm – dual aspect, beautifully proportioned, with a private balcony and a statement en-suite complete with freestanding bath, twin sinks and walk-in shower. Every bedroom is generously sized, with bespoke wardrobes, and there's underfloor heating throughout all bathrooms.

To the rear, a large patio flows directly from the kitchen – the perfect sun trap for lounging, barbecues, or relaxed weekend coffees. It leads down to a generous lower lawn, where there's space for outdoor dining, games, or long summer evenings around a fire pit. The garden unfolds in layers, with different pockets of space for entertaining, play, or peaceful escape.

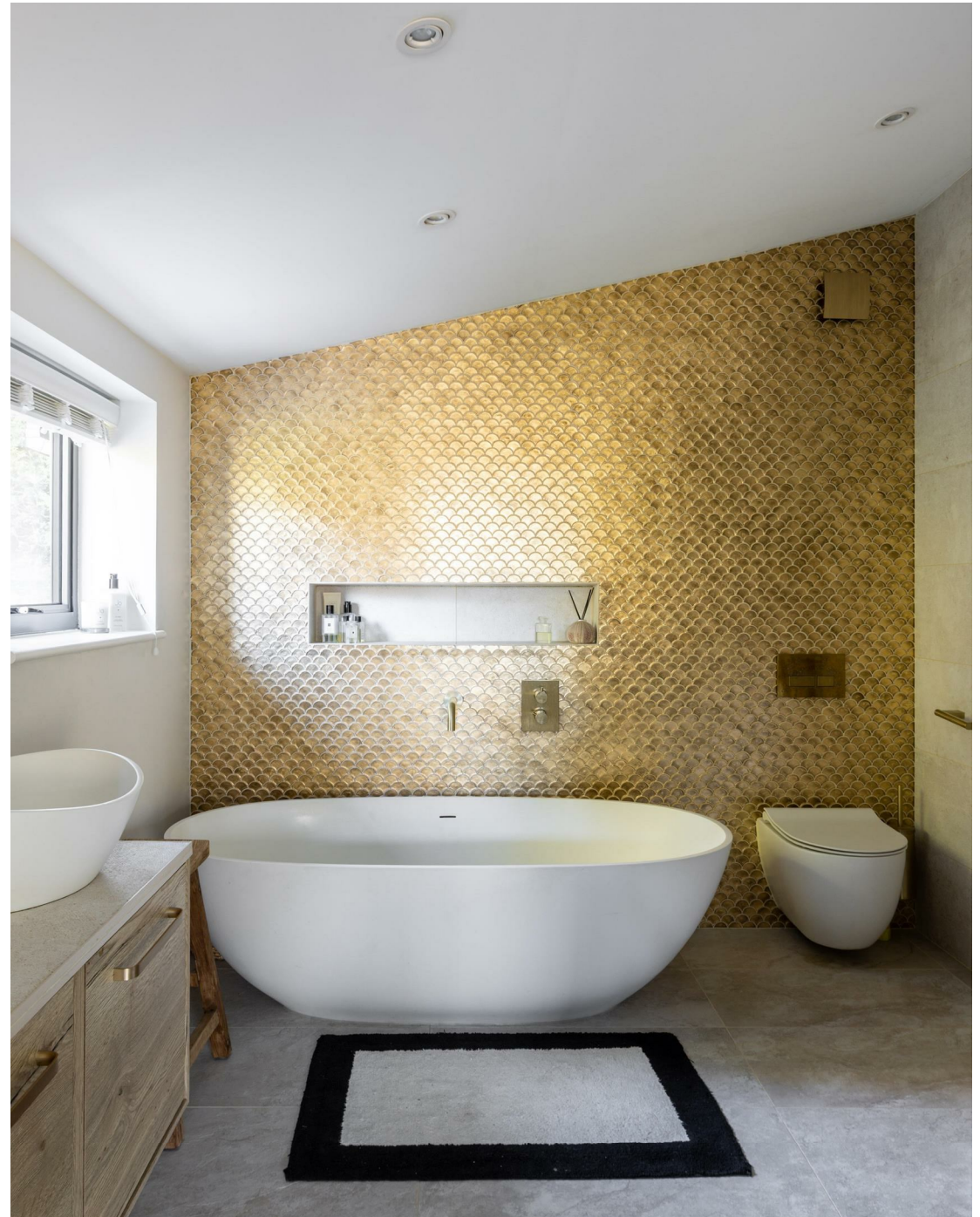






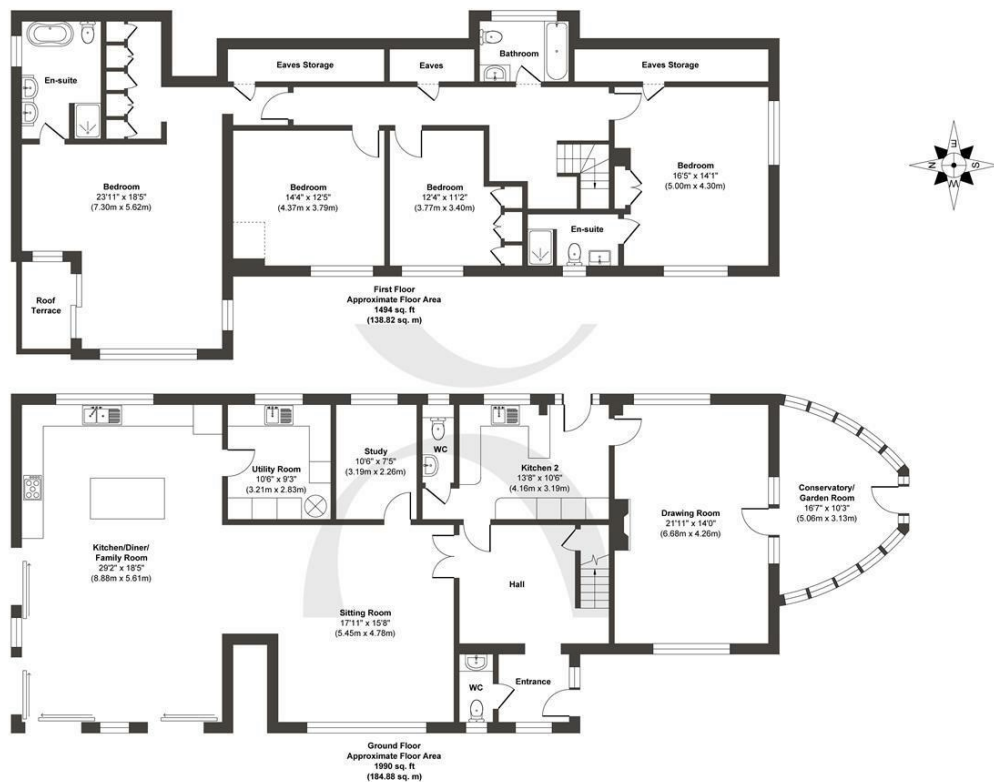
An impressive beech hedge at the front of the plot creates total privacy and a grand sense of arrival, while a sculptural arch carved through the greenery adds a sense of magic and connection between different parts of the garden. Mature trees, tiered landscaping and glazed balustrades frame the house and its setting, giving Wildwood a unique mix of modern design and natural beauty.

The location is brilliant too – just over a mile from Caterham town centre and within easy reach of both Caterham and Hawthorns schools. The surrounding countryside offers endless walks straight from the doorstep, including a nearby viewpoint with spectacular views – a real favourite with local dog owners and outdoor lovers.









STONE

The Details

- Architect-designed modernist home of over 3,400 sq ft in a tranquil woodland setting
- Four double bedrooms and three bathrooms as well as study on ground floor
- Statement open plan kitchen and living space
- Separate self-contained living space – ideal for guests or multigenerational living
- Peaceful location near Caterham School @ The Hawthorns
- 1.5-acre plot with landscaped gardens

Size
Approx 3484.00 sq ft

Energy Performance Certificate (EPC)
Rating C

Council Tax Band
G



STONE

Let's *Talk*

01737 301 557

hello@stoneestateagents.co.uk

stoneestateagents.co.uk

The particulars above are a guide, not an offer or contract. Descriptions photographs and plans are not statements or representations of fact. Measurements are approximate and not to scale. Prospective purchasers must verify the accuracy of the information within the particulars. Stone does not give any representations or warranties; nor represent the Seller legally. Stone has no liability, for any costs, losses or expenses incurred by the Seller or a prospective buyer relating to the sales and buying transaction. Our Sales Disclaimer, trading names and privacy policy on how your data is processed and used is found in full on our website in our Privacy Statement.

© Stone Estate Agents 2023 All rights Reserved