

STONE



*Albert Road North RH2*

£650,000



*“At Stone, we’re passionate about  
the unique and awe-inspiring  
architectural elements that transform  
houses into dream homes.”*

---

*The Stone Family*



Tucked along the desirable Albert Road North, this charming and spacious three bedroom home offers the perfect blend of contemporary comfort and classic character. With well-proportioned bedrooms, including a spacious principal, and two beautifully appointed bathrooms – a modern downstairs family bathroom and an upstairs shower room – this home is designed for both practicality and style.

Upon entering, you're welcomed by a generous hallway that sets the tone for the home's sense of space and light. The expansive reception room is bathed in natural light, benefiting from dual aspect living and dining area, with doors opening onto the garden – an ideal space for relaxation or entertaining. The modern kitchen is thoughtfully designed, featuring integrated appliances and sleek finishes, making it a pleasure to cook and dine in. Throughout, the home is neutrally decorated, offering a contemporary yet inviting canvas for its next owners.















Albert Road North is an address that balances tranquil residential living with superb access to Reigate's renowned lifestyle. Just off the quintessential Nutley Lane, this sought-after pocket of North Reigate is moments from the heart of the town, placing independent boutiques, artisan cafés, and excellent restaurants within easy reach.

A short stroll brings you to The Admiral Pub, a much-loved local with a charming beer garden, perfect for leisurely afternoons or evening drinks. Beyond, Reigate's historic streets open up to a vibrant mix of boutique shops, renowned eateries, and cultural landmarks, with the beautiful Priory Park providing an idyllic green escape.

For those who enjoy the outdoors, scenic dog walks are easily accessible, whether meandering through Reigate Heath or taking in the stunning views from Reigate Hill and Gatton Park. Commuters will appreciate the walking distance to Reigate train station, offering direct links to London, while the nearby M25 ensures effortless access to Gatwick, Heathrow, and beyond.

Families are particularly drawn to this location, with well-regarded schools and nurseries just moments away, making it an excellent choice for those seeking a long-term home in one of Reigate's most desirable residential areas.

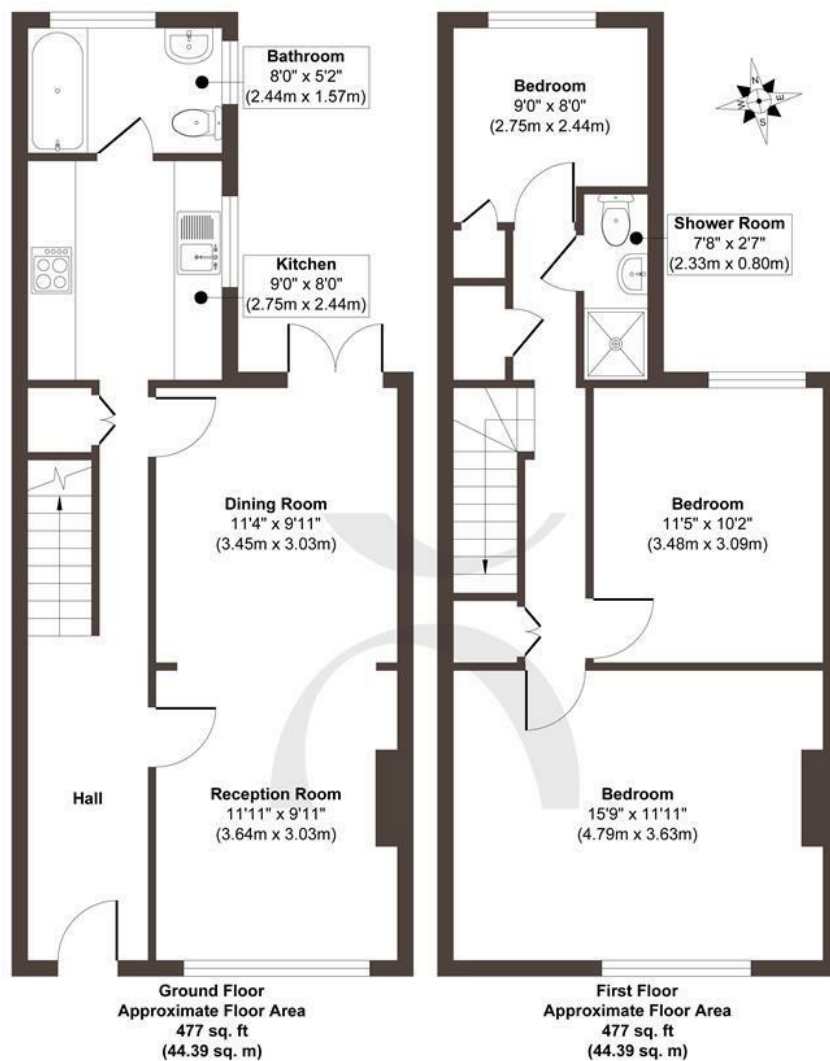












STONE

## The Details

- A charming and spacious family home on a desirable residential road
- Perfectly situated for Reigate's historic high street, commuting and schooling
- Three well-proportioned bedrooms are served by two modern bathrooms
- Contemporary kitchen design with integrated appliances
- Expansive dual aspect reception with living and dining areas
- Garden with potential to create a sociable setting, with the foundations for an outdoor kitchen already in situ
- Neutrally decorated throughout, offering a stylish and versatile interior

Size  
Approx 954.00 sq ft

Energy Performance Certificate (EPC)  
Rating D

Council Tax Band  
D



STONE

Let's *Talk*

01737 301 557

hello@stoneestateagents.co.uk

stoneestateagents.co.uk

The particulars above are a guide, not an offer or contract. Descriptions photographs and plans are not statements or representations of fact. Measurements are approximate and not to scale. Prospective purchasers must verify the accuracy of the information within the particulars. Stone does not give any representations or warranties; nor represent the Seller legally. Stone has no liability, for any costs, losses or expenses incurred by the Seller or a prospective buyer relating to the sales and buying transaction. Our Sales Disclaimer, trading names and privacy policy on how your data is processed and used is found in full on our website in our Privacy Statement.

© Stone Estate Agents 2023 All rights Reserved