

STONE



42

*Holmesdale Road RH2*

£650,000 - £675,000

*“At Stone, we’re passionate about the unique and awe-inspiring architectural elements that transform houses into dream homes.”*

————— *The Stone Family*



Discover this charming three bedroom Victorian house, a rare find on the desirable Holmesdale Road, offering an unparalleled blend of historic charm and modern comfort. Unique to this property is its private parking for two cars—an extraordinary feature on this sought-after street. The wider plot, made possible by the side parking, offers the luxury of a spacious, south-facing garden, perfect for outdoor living.

Upon entering through the classic Victorian-style front door, you're welcomed into an inviting, meticulously maintained interior, where period features blend seamlessly with modern updates.

A generous entrance hall greets you, enhanced by the convenience of a ground-floor WC. The original Victorian arched doorways lead you through to two elegant reception rooms, each offering ample space for both relaxation and entertainment.

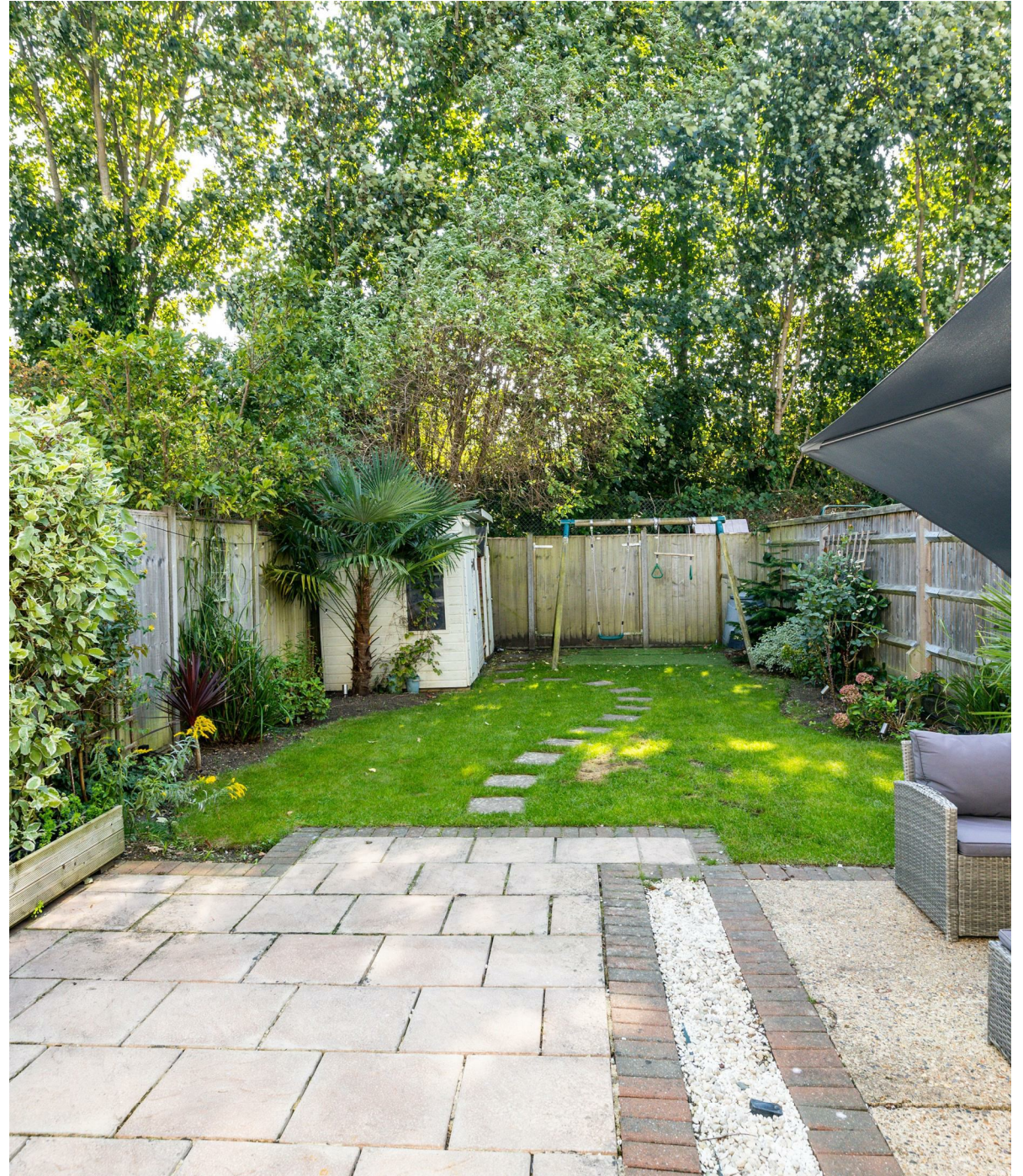
Thoughtfully designed to retain the home's historic character, these rooms feature original built-in bookshelves, perfect for displaying treasured collections, and stunning stone fireplaces that serve as striking focal points, adding warmth and charm to the space.



To the rear of the dining room lies the bright, airy kitchen. Featuring a modern shaker design with beautiful wooden worktops, this space combines functionality with style. The kitchen is perfectly positioned to lead directly out to the expansive south-facing garden, making it ideal for both indoor and outdoor dining.

Large windows and garden doors flood the room with natural light, creating a seamless transition between the interior living space and the lush outdoor area. This sun-soaked, beautifully landscaped space invites relaxation, al fresco dining, or even gardening, with plenty of room to enjoy the outdoors in privacy.

Upstairs, the three generously sized bedrooms offer peaceful retreats, with each room bathed in natural light. The well-designed floor plan also accommodates a sleek, modern shower room making the home ideal for families or those looking to downsize.

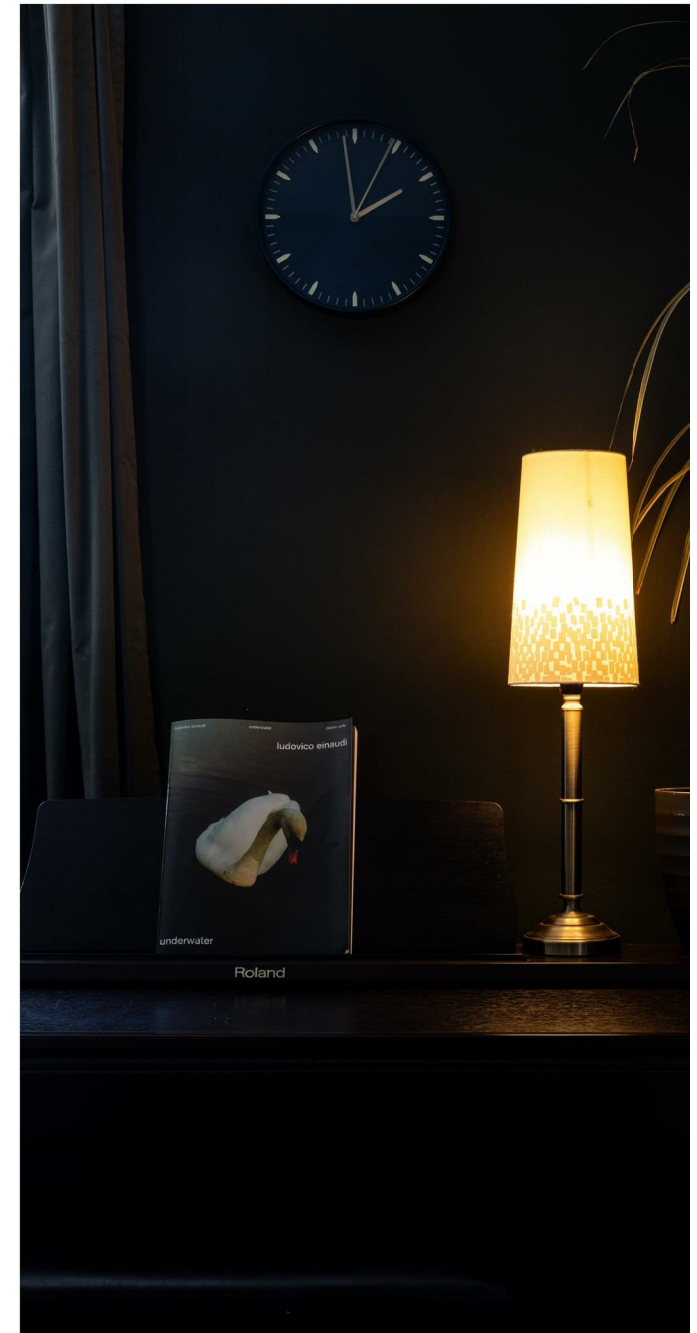






Holmesdale Road offers a perfect blend of tranquility and accessibility. The on-street parking ensures ease of arrival, while the proximity to Reigate station makes commuting a seamless experience. You can arrive in London from your front door in under one hour.

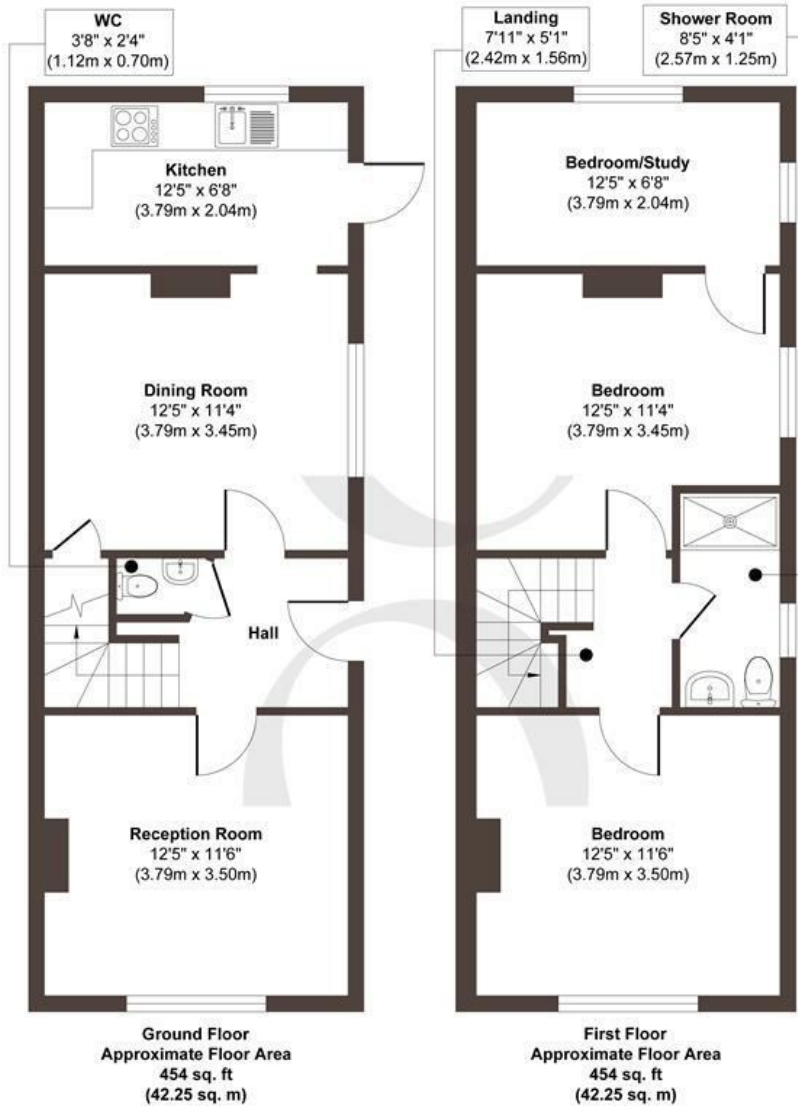
Beyond the immediate surroundings, residents can explore the charm of Reigate, with its array of shops, restaurants, and recreational amenities. You can enjoy the popular Reigate priory park, or Reigate Hill/ Gatton park national trust for weekend strolls. Reigate is spoilt by amazing schools, with Holmesdale School close by with outstanding reviews aswell as great nursery's positioned on the road.











**Approx. Gross Internal Floor Area 908 sq. ft / 84.50 sq. m**

Illustration for identification purposes only, measurements are approximate, not to scale.

Produced by Elements Property

**STONE**

## The Details

- Three bedroom semi-detached house
- Off road parking for two cars
- Large south facing garden
- Central Reigate location close to Reigate train station
- Beautifully presented home with original features
- Ground floor WC and Shower room on first floor
- Potential to extend to side and rear. (Subject to planning)

Size  
Approx 908.00 sq ft

Energy Performance Certificate (EPC)  
Rating D

Council Tax Band  
D



STONE

*Let's Talk*

01737 301 557

hello@stoneestateagents.co.uk

stoneestateagents.co.uk

The particulars above are a guide, not an offer or contract. Descriptions photographs and plans are not statements or representations of fact. Measurements are approximate and not to scale. Prospective purchasers must verify the accuracy of the information within the particulars. Stone does not give any representations or warranties; nor represent the Seller legally. Stone has no liability, for any costs, losses or expenses incurred by the Seller or a prospective buyer relating to the sales and buying transaction. Our Sales Disclaimer, trading names and privacy policy on how your data is processed and used is found in full on our website in our Privacy Statement.

© Stone Estate Agents 2023 All rights Reserved