

STONE



Ridgeway Road RH1

£450,000

*“At Stone, we’re passionate about
the unique and awe-inspiring
architectural elements that transform
houses into dream homes.”*

The Stone Family



This charming two bedroom ground floor maisonette offers a perfect blend of period elegance and modern living, on the highly desirable Ridgeway Road. Thoughtfully converted from a Victorian property, this home boasts timeless architectural features and contemporary comforts, making it ideal for professionals, downsizers, or young families seeking a lifestyle with character and convenience.

Steps lead to the traditional front door and porch, setting the tone for the refined interiors. The front reception room is an inviting space with a striking bay window that floods the room with natural light, complemented by tall ceilings, a picture rail, intricate corning, and a fireplace framed by built-in cabinetry and open shelving.

The principal double bedroom features an original ornate fireplace, adding a touch of history to the space. A spacious modern kitchen with garden access sits at the heart of the home, boasting deep green shaker-style cabinetry accented with gold hardware, sleek white worktops, and a breakfast bar for casual dining.

Beyond the kitchen, you'll find a practical office space and a convenient downstairs W/C. Outside, the property's large garden is a private haven, with a decked seating area for al fresco dining and a summer house at the rear, ideal as a creative space, home gym, or retreat.

Descending to the lower ground floor reveals a second generously proportioned double bedroom and a beautifully designed family bathroom. This luxurious retreat includes traditional chrome hardware, marble-effect metro tiling, and panelling, offering a serene space to unwind.









Ridgeway Road is a sought-after residential street a short stroll from Redhill's bustling town centre, featuring a mix of shops, cafés, and restaurants, alongside The Belfry Shopping Centre and a rejuvenated Memorial Park. For commuters, Redhill Station provides excellent rail links to London Bridge, London Victoria, Gatwick Airport, and beyond.

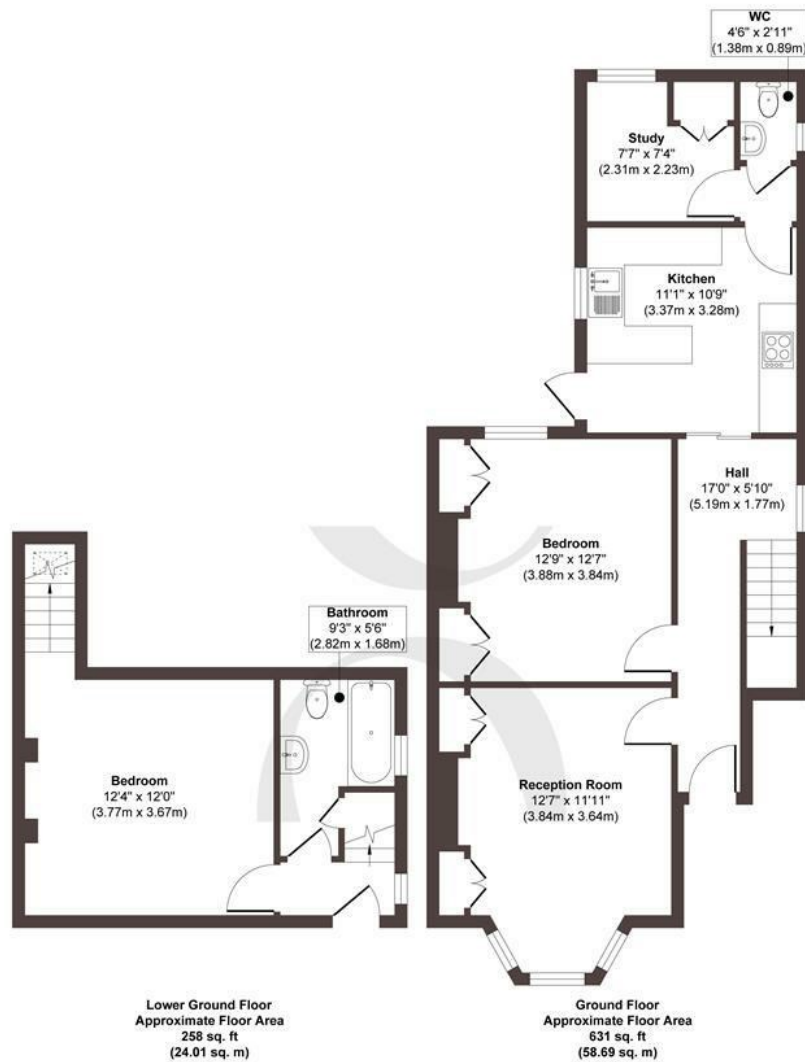
Just a few minutes away, Reigate adds a touch of historic charm with its boutique shopping, independent eateries, and landmarks like Priory Park. The area is renowned for its scenic walks, with Reigate Hill and the North Downs offering breathtaking views and trails for outdoor enthusiasts.

Families will appreciate the excellent schools nearby, while the proximity to the M25 ensures seamless connections to London and the South Coast. Whether you're looking for a vibrant social scene or peaceful green spaces, this home offers it all.









Approx. Gross Internal Floor Area 889 sq. ft / 82.70 sq. m

Illustration for identification purposes only, measurements are approximate, not to scale.

Produced by Elements Property

STONE

The Details

- *Converted two bedroom ground floor garden apartment*
- *Situated along the desirable Ridgeway Road, a prime Redhill location*
- *Principal double bedroom with ornate, original fireplace*
- *Spacious reception with character mantel, flooded with light from the bay window*
- *Modern kitchen with breakfast bar and garden access*
- *Characterful home with tall ceilings, picture rails and cornicing*
- *Well-proportioned garden with Summer house and al-fresco dining spot*
- *Off road parking and Share of Freehold*

Size

Approx 889.00 sq ft

Energy Performance Certificate (EPC)

Rating E

Council Tax Band

B



STONE

Let's *Talk*

01737 301 557

hello@stoneestateagents.co.uk

stoneestateagents.co.uk

The particulars above are a guide, not an offer or contract. Descriptions photographs and plans are not statements or representations of fact. Measurements are approximate and not to scale. Prospective purchasers must verify the accuracy of the information within the particulars. Stone does not give any representations or warranties; nor represent the Seller legally. Stone has no liability, for any costs, losses or expenses incurred by the Seller or a prospective buyer relating to the sales and buying transaction. Our Sales Disclaimer, trading names and privacy policy on how your data is processed and used is found in full on our website in our Privacy Statement.

© Stone Estate Agents 2023 All rights Reserved