

STONE



Ridgeway Road RH1

£1,100,000

“At Stone, we’re passionate about the unique and awe-inspiring architectural elements that transform houses into dream homes.”

————— *The Stone Family*



Discover an exceptional property on Ridgeway Road. This unique, substantial townhouse spans 2,478 sq ft across four floors, perched on the edge of a hill, offering far-reaching views.

Built in 1866 by local builders, it was one of the first houses to grace this road, transforming what were once orchards into a charming residential area. The facade showcases classical Victorian features, including ornate coving, painted iron railings, and church-like rooftop finials. The oversized front door and windows hint at the tall ceilings and spacious rooms within.

Upon entering the ground floor, you'll find a large dual-aspect reception room with two impressive character fireplaces and views of the verdant garden. This level also includes a WC and a door leading to a traditional terrace.



Descending to the lower ground, a large open plan kitchen and dining room unfolds, with doors opening onto the gorgeous South East facing garden.

Here, seek the sun on the patio area, or descend to the shady lawn, surrounded by mature trees offering privacy. Steps lead up to the ground floor terrace area, seamlessly connecting the reception spaces to the outdoors,

Inside, the lower ground is home to an additional family room, and a convenient utility room.







The top two floors house four double bedrooms, accompanied by a WC, family bathroom, and en-suite. One bedroom boasts an attractive tiled fireplace and a gorgeous bay window with far-reaching views. Next door, the principal suite includes an en-suite shower room and opens onto a front balcony with painted railing.

The two loft rooms are spacious and well-lit through large traditional sash windows. The study, featuring a unique lancet window, houses the winding stair to the Belvedere tower.

During WW2, it is understood the house was commandeered by the army and the Belvedere - ideally suited for observation purposes - was used as a lookout for the fire wardens.

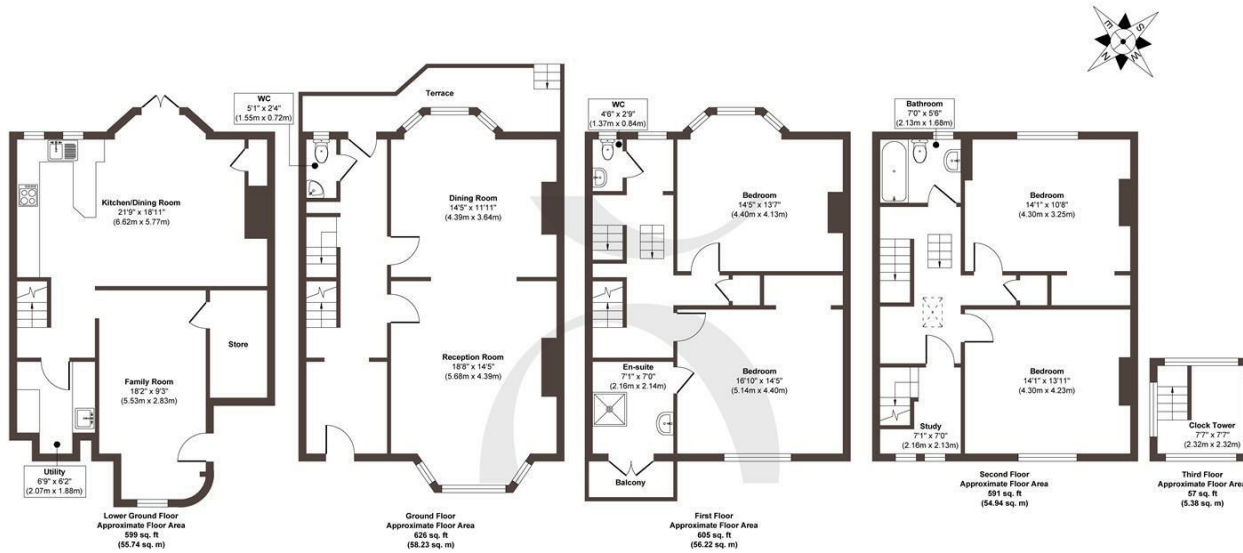






The Details

- Victorian townhouse with Belvedere tower
- Four double bedrooms and two bathrooms
- Large dual aspect reception room
- Terrace with balcony overlooking the garden
- Open plan kitchen and dining room
- Beautiful private garden
- Family bathroom with unique stained glass window
- Utility room plus two W/C's for convenience
- Off road parking for two cars



Approx. Gross Internal Floor Area 2478 sq. ft / 230.51 sq. m

Illustration for identification purposes only, measurements are approximate, not to scale.

Produced by Elements Property

STONE

Size
Approx 2478.00 sqft

Energy Performance Certificate (EPC)
Rating E

Council Tax Band
F



STONE

Let's Talk

01737 301 557

hello@stoneestateagents.co.uk

stoneestateagents.co.uk

The particulars above are a guide, not an offer or contract. Descriptions photographs and plans are not statements or representations of fact. Measurements are approximate and not to scale. Prospective purchasers must verify the accuracy of the information within the particulars. Stone does not give any representations or warranties; nor represent the Seller legally. Stone has no liability, for any costs, losses or expenses incurred by the Seller or a prospective buyer relating to the sales and buying transaction. Our Sales Disclaimer, trading names and privacy policy on how your data is processed and used is found in full on our website in our Privacy Statement.

© Stone Estate Agents 2023 All rights Reserved