

STONE



Hextalls Lane RH1

£1,250,000

“At Stone, we’re passionate about the unique and awe-inspiring architectural elements that transform houses into dream homes.”

————— *The Stone Family*



A remarkable piece of English history has hit the market in Bletchingley.

This fascinating residence forms the gargantuan East wing of a magnificent house with period origins believed to date back to Tudor times and beyond. Steeped in historical significance, this property was reportedly used by none other than Henry VIII as a hunting lodge during his stag shoots.

The intriguing accommodation - some 4123 sqft in all - is arranged over three floors with a degree of flexibility to the layout that will appeal to purchasers keen to personalise their new home to individual taste.

The striking redbrick and exposed stone façade of Dysart is quintessentially medieval, with its steeply pitched roof, charming gables, and kitchen placed below within the servant's quarters.

The property sits on a beautifully landscaped plot, with mature trees and well-maintained gardens that offer a serene and picturesque setting. The grounds are perfect for outdoor entertaining or simply enjoying the peaceful countryside.



The drawing room, bathed in natural light from expansive windows, offers sweeping views of the meticulously landscaped grounds. Here, tradition meets comfort with a charming window seat, tall skirting boards, and high ceilings.

The room's pièce de résistance is an enormous original ornate fireplace with a working fire and stone surround. To the rear, a second reception room offers a cosier retreat, with its warm stone fireplace and original beams.

Descending to the lower ground floor, you are transported back 500 years to a medieval stone room adorned with original beams and exposed stone. Currently serving as a dining room, this space offers an atmospheric backdrop for memorable dinners and celebrations.







Adjacent to this historical gem is the kitchen and breakfast room, where an enormous stone inglenook fireplace serves as a captivating focal point, blending old-world charm with contemporary functionality.

Large windows frame views of the charming patio area, inviting the outdoors in and making this space the heart of the home.

The first floor continues to impress with three beautifully appointed double bedrooms. The principal bedroom suite is a sanctuary of luxury, reminiscent of a boutique hotel.

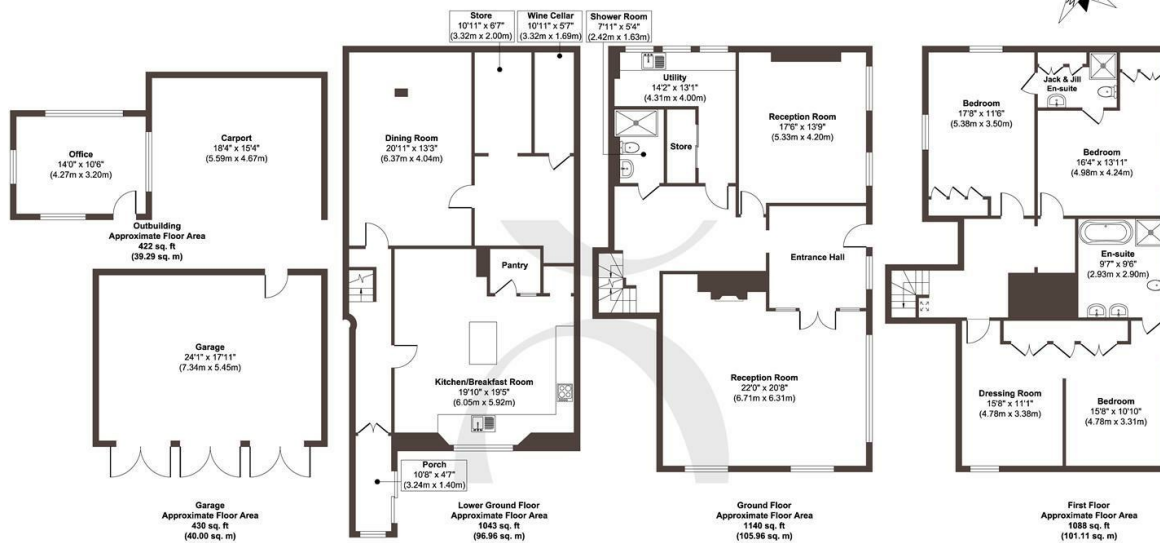
A grand dressing area leads into a cosy bedroom retreat, and the journey culminates in a spacious, modern bathroom that promises moments of indulgence and tranquility.

Two additional double bedrooms share a stylish Jack and Jill en-suite bathroom, ensuring comfort and convenience for family members or guests.









Approx. Gross Internal Floor Area 4123 sq. ft / 383.32 sq. m (Including Garage & Outbuilding)

Illustration for identification purposes only, measurements are approximate, not to scale.

Produced by Elements Property

STONE

The Details

- Unique property, seamlessly blending old with new
- Principal bedroom with dressing area and en-suite bathroom
- Two double bedrooms with Jack and Jill bathroom
- Large drawing room with large stone fireplace
- Lounge with original beams
- A traditional utility room, sleek modern shower room, and ample storage
- Expansive kitchen/breakfast room with inglenook fireplace
- Medieval basement room with exposed stone and beams
- Approximately 1.5 acre gardens, including paddock
- Triple garage, car port and modern office

Size

Approx 4123.00 sq ft

Energy Performance Certificate (EPC)

Rating

Council Tax Band

G



STONE

Let's Talk

01737 301 557

hello@stoneestateagents.co.uk

stoneestateagents.co.uk

The particulars above are a guide, not an offer or contract. Descriptions photographs and plans are not statements or representations of fact. Measurements are approximate and not to scale. Prospective purchasers must verify the accuracy of the information within the particulars. Stone does not give any representations or warranties; nor represent the Seller legally. Stone has no liability, for any costs, losses or expenses incurred by the Seller or a prospective buyer relating to the sales and buying transaction. Our Sales Disclaimer, trading names and privacy policy on how your data is processed and used is found in full on our website in our Privacy Statement.

© Stone Estate Agents 2023 All rights Reserved