

STONE



Reigate Hill RH2

£2,000,000

“At Stone, we’re passionate about the unique and awe-inspiring architectural elements that transform houses into dream homes.”

————— *The Stone Family*



The allure of this property lies in its secluded nature, offering serene charm amidst the hustle and bustle of urban life. Tucked away from the prying eyes of the world, it exudes a sense of peace and privacy. Despite its discreet positioning, convenience remains at the forefront, with easy access to all amenities and local attractions.

This residence transcends the ordinary - offering a lifestyle of architectural brilliance and unparalleled comfort. Recently rejuvenated by its discerning owners, this property stands as a testament to refined taste and meticulous craftsmanship.

Crossing the threshold, you're greeted by grandeur redefined, where the expansive open-plan kitchen reigns supreme amidst sleek surfaces and state-of-the-art appliances. The polished concrete floor and underfloor heating throughout the rear extension ensure every step is taken in luxury.

The hand-built kitchen and utility areas, adorned with 30mm thick solid reclaimed French oak doors, evoke a sense of timeless elegance, while a reinforced concrete and live-edge oak kitchen island serves as the epicentre of culinary creativity.

Triple Belfast sinks and a modern 1.5m R7 Electric Aga Cooker with induction hob elevate the cooking experience, while vaulted ceilings and glazed gables invite sunlight to dance freely, creating an airy, luminous ambiance.



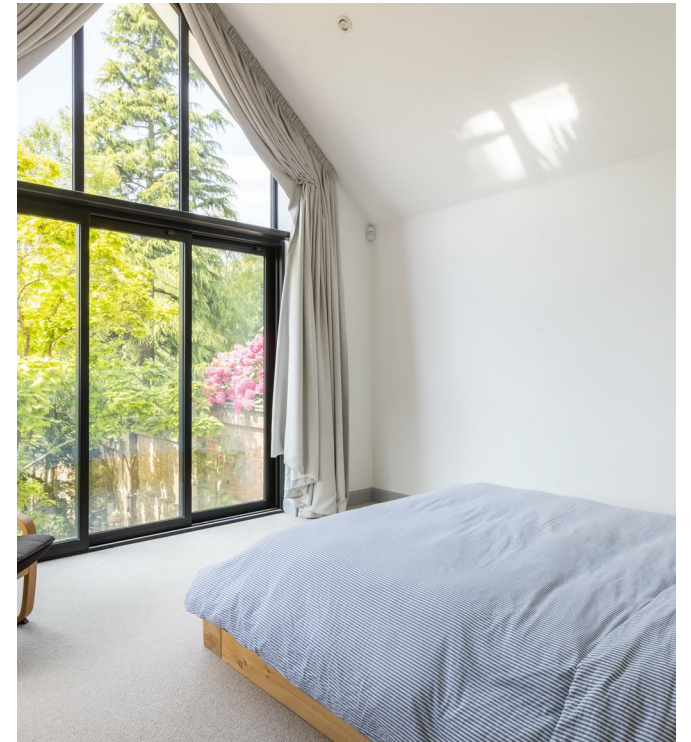
Venturing outdoors, a 20x5m Indian sandstone patio beckons for alfresco gatherings, leading to a mature west-facing garden where a beautiful blue cedar with a swing invites moments of serenity beneath its boughs.

Gated side access ensures convenience, while the seamless connection between interior and exterior spaces redefines the concept of modern living.

Inside, a dual-aspect lounge area offers a sanctuary for relaxation and conviviality. Hardwood floors and a 1m wide Stovax 8.5kw wood-burning stove create an atmosphere of warmth and intimacy.

Completing the ground floor, there is an office, a spacious playroom, a separate utility, and downstairs W/C - offering everything a modern family may need.







Ascending to the upper level, a realm of tranquility unfolds, boasting five double bedrooms exuding serenity and refinement.

Among them, a principal bedroom stands as an epitome of luxury, featuring an exquisitely designed modern shower room promising indulgence and relaxation. Here, sliding doors and a glazed gable open onto a balcony, offering views across Reigate Hill.

Bedroom two mirrors the principal suite, with a huge gable window and a Mezzanine space above the family bathroom that offers versatility.

The modern bathrooms feature dual control electric showers and luxury bathrooms with downlighting and beautiful herringbone stoneware tiles in shades of blue elevate the bathing experience to new heights.

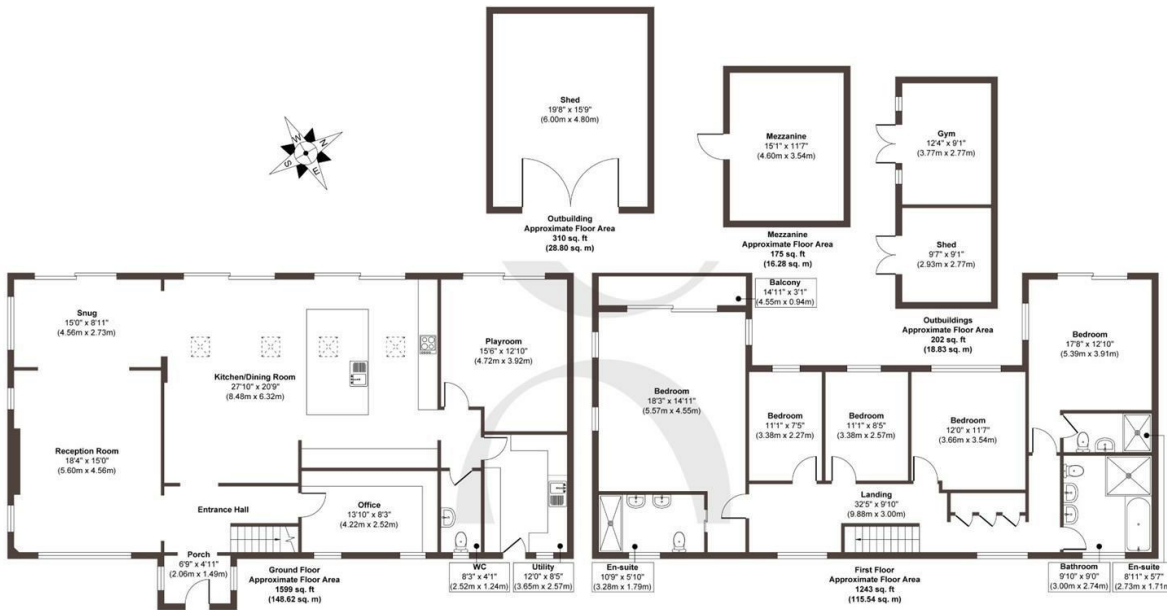






The Details

- A detached luxury home within a 0.4 acre plot
- Large west facing garden with patio, mature planting and large lawn
- CCTV cameras and alarm with app control
- 7 x 3m gym/summer house and store with lights and power
- 6 x 4.8m garden shed with power, lights and shelving for storage
- 20m² pressure treated glasshouse built into the south facing garden wall
- Ample secure private parking for a large number of vehicles with electric car charging point
- Bespoke automated corten steel gates, based on the central blue cedar tree in the garden



Approx. Gross Internal Floor Area 3529 sq. ft / 328.07 sq. m (Including Outbuilding & Mezzanine)

Illustration for identification purposes only, measurements are approximate, not to scale.

Produced by Elements Property

STONE

Size

Approx 3529.00 sqft

Energy Performance Certificate (EPC)

Rating

Council Tax Band

G



STONE

Let's Talk

01737 301 557

hello@stoneestateagents.co.uk

stoneestateagents.co.uk

The particulars above are a guide, not an offer or contract. Descriptions photographs and plans are not statements or representations of fact. Measurements are approximate and not to scale. Prospective purchasers must verify the accuracy of the information within the particulars. Stone does not give any representations or warranties; nor represent the Seller legally. Stone has no liability, for any costs, losses or expenses incurred by the Seller or a prospective buyer relating to the sales and buying transaction. Our Sales Disclaimer, trading names and privacy policy on how your data is processed and used is found in full on our website in our Privacy Statement.

© Stone Estate Agents 2023 All rights Reserved