



4 Codale Drive, Bolton

£300,000 Freehold

Fully refurbished four bedroom semi detached property • Brand new graphite kitchen with integrated Neff appliances and granite worksurfaces • Brand new bathroom suite, en-suite and downstairs W.C. • Brand new flooring throughout • Utility room • Bi-fold doors in the kitchen which leads to the rear garden • Brand new composite decking to create an immediate patio with pergola • Stunning rear garden with bespoke fencing and multi-level landscaped garden • Primary bedroom with en-suite • Media wall created in the snug

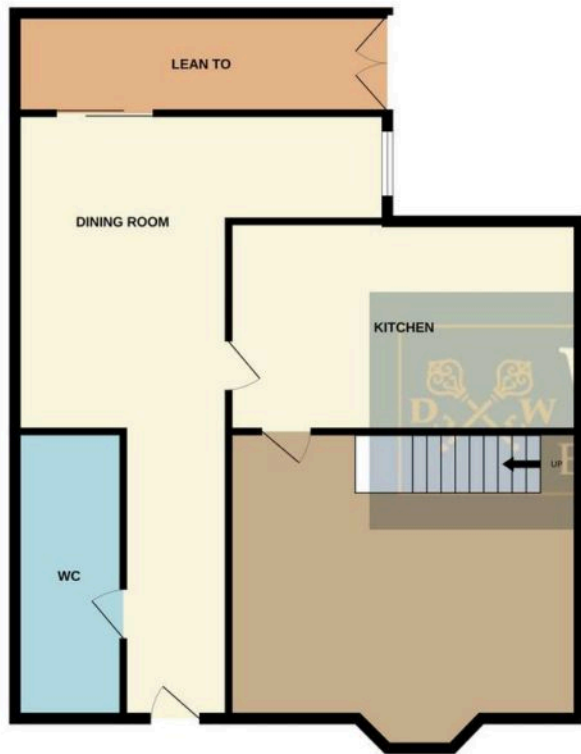




This fully refurbished four-bedroom semi-detached house presents a stunning blend of modern design and functionality. The property boasts a brand new graphite kitchen complete with integrated Neff appliances and elegant granite worksurfaces. A fresh bathroom suite, en-suite, and downstairs W.C. ensure convenience and comfort, while the new flooring throughout adds a touch of luxury. In addition to a utility room, the house features bi-fold doors in the kitchen that open up to a picturesque rear garden. Step out onto the brand new composite decking, ideal for al fresco dining under the pergola. The stunning landscaped rear garden, complete with bespoke fencing, offers a tranquil oasis.

The primary bedroom includes an en-suite for added privacy, and a unique media wall has been created in the snug, perfect for cosy nights in.

GROUND FLOOR



1ST FLOOR



Whilst every attempt has been made to ensure the accuracy of the floorplan contained here, measurements of doors, windows, rooms and any other items are approximate and no responsibility is taken for any error, omission or mis-statement. This plan is for illustrative purposes only and should be used as such by any prospective purchaser. The services, systems and appliances shown have not been tested and no guarantee as to their operability or efficiency can be given.
Made with Metropix ©2024





Outside, the property continues to impress with a block-paved driveway providing parking for up to three vehicles and a vast new lawned area enclosed by brand new fence panels. The rear garden is a true gem, with a three-tiered design that includes brand new composite decking, a charming pergola, and steps crafted from York stone and railway sleepers leading to the lush lawned area. Bespoke fencing surrounds the garden, while outside lighting, electric sockets, and a York stone patio on the top tier make this space perfect for entertaining or relaxing. The block-paved driveway adds further convenience and enhances the property's kerb appeal. This home offers a perfect blend of indoor luxury and outdoor charm, making it an ideal retreat for those seeking a stylish and comfortable living environment.