

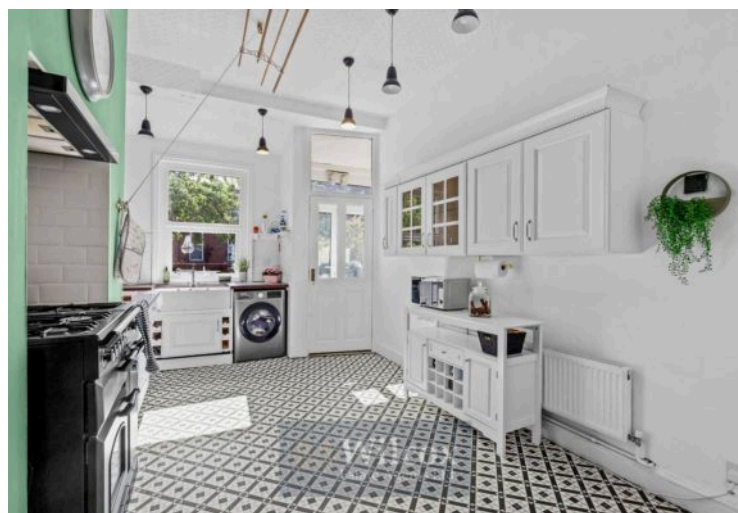
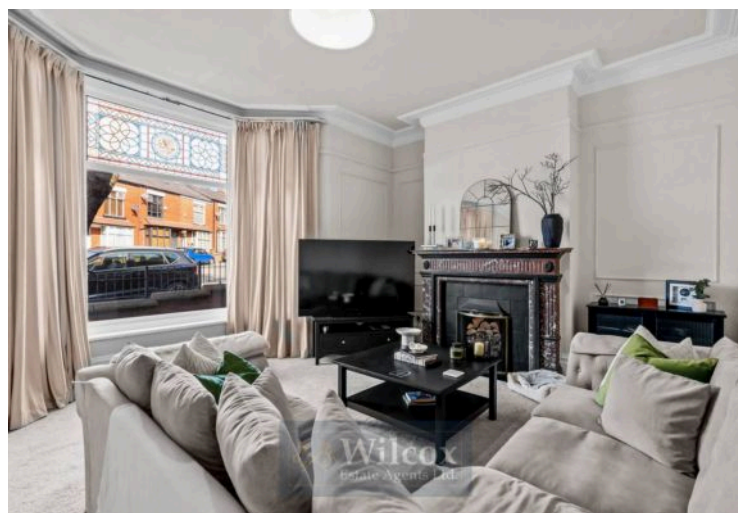
## 4 Wyresdale Road, Bolton

£325,000 Leasehold

Six bedroom Victorian End Terrace • Two reception rooms • Basement • Beautiful character property with period features • Secure driveway to rear with electric roller shutter • Walking distance to the prestigious Bolton School • Two minute walk to the local mosque • Queens Park only two minute walk away • Five minute walk to Bolton Town Centre • Substantial family home







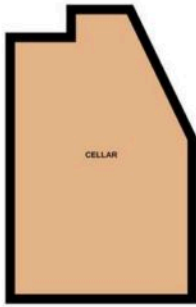
Nestled in a prime residential location, this exceptional six-bedroom Victorian end terrace boasts an unparalleled blend of elegance and sophistication. This beautiful character property exudes charm and boasts a wealth of period features that are sure to captivate the discerning eye.

Upon entering the property, one is greeted by a grand hallway that leads to two spacious reception rooms, perfect for hosting guests or relaxing with the family. The seamless flow of the layout is enhanced by high ceilings, intricate

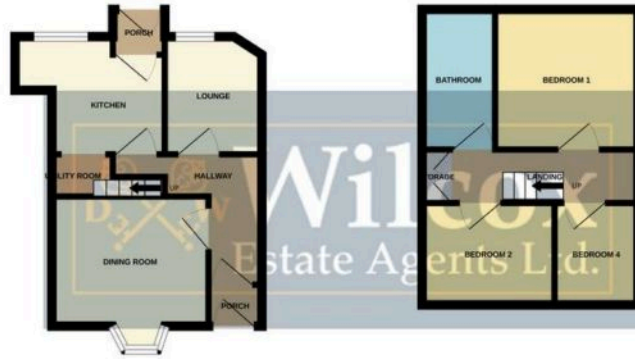
The seamless flow of the layout is enhanced by high ceilings, intricate cornices, and exquisite original fireplaces that serve as a nod to the property's rich history.

The kitchen is a chef's delight, offering ample space for culinary creativity and culinary gatherings. Fitted with sleek cabinetry, this space seamlessly combines style and functionality. A convenient basement adds an extra dimension to the property, offering additional storage or potential for conversion to suit the new owner's needs.

BASEMENT



GROUND FLOOR



1ST FLOOR



2ND FLOOR



Whilst every attempt has been made to ensure the accuracy of the floorplan contained here, measurements of doors, windows, rooms and any other items are approximate and no responsibility is taken for any error, omission or mis-statement. This plan is for illustrative purposes only and should be used as such by any prospective purchaser. The services, systems and appliances shown have not been tested and no guarantee as to their operability or efficiency can be given.  
Made with Metropix ©2025



