

# Marina Point, SW6



Great rental investment opportunity. A 2 bedroom apartment on the 4th floor of this sought after riverside development on the Chelsea/ Fulham border benefiting from a large balcony overlooking the communal gardens with views towards the river.

971 SQ FT/ 90.2 SQ M | RECEPTION ROOM | 2 BEDROOMS | EN SUITE SHOWER ROOM | BATHROOM | BALCONY



**Guide Price £1,000,000**

020 7937 9070  
[www.croftinternational.co.uk](http://www.croftinternational.co.uk)

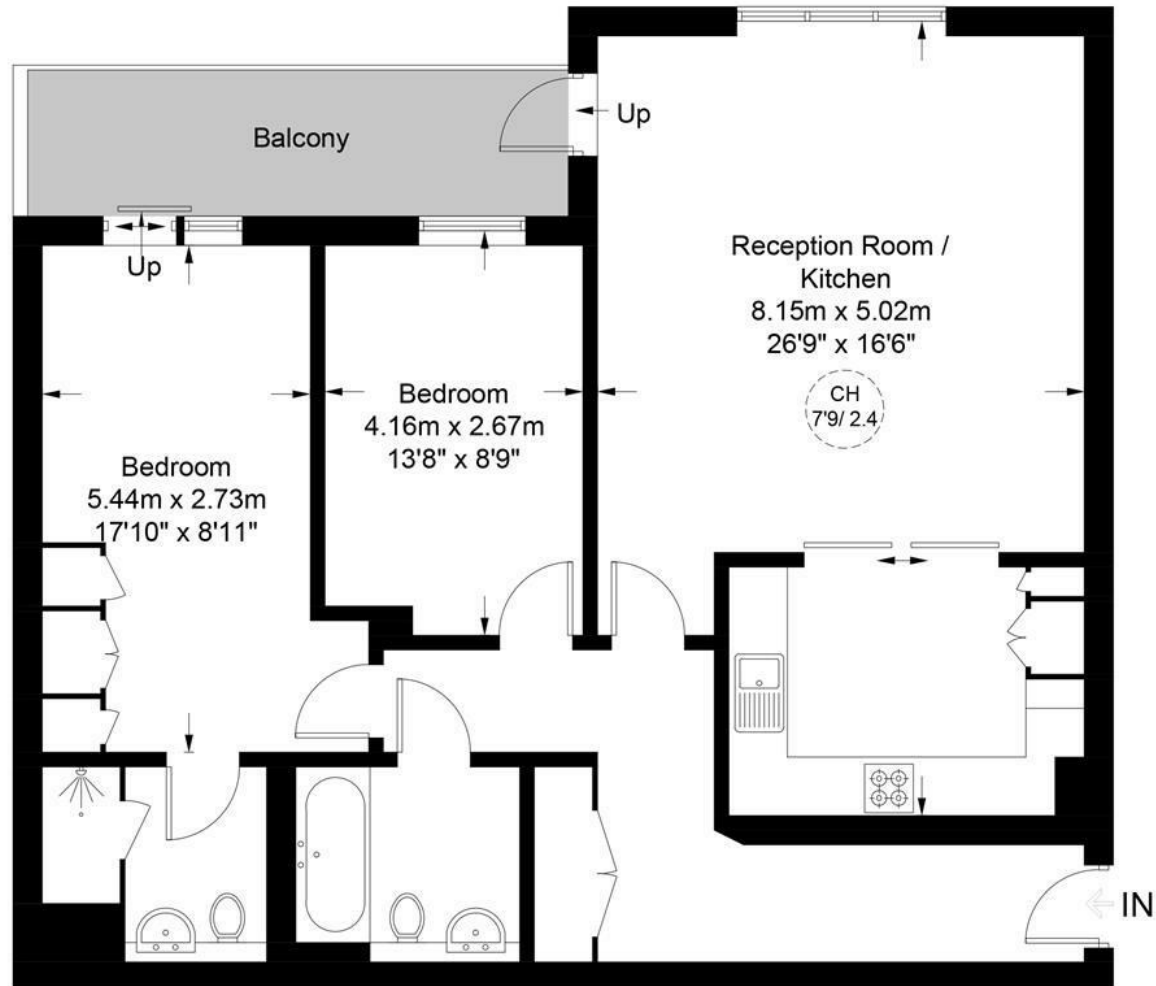
**Leasehold**





# Marina Point, SW6

Approximate Gross Internal Area = 971 sq ft / 90.2 sq m



## Fourth Floor



**Certified  
Property  
Measurers**

This plan is for layout guidance only. Not drawn to scale unless stated. Windows and door openings are approximate. Whilst every care is taken in the preparation of this plan, please check all dimensions, shapes and compass bearings before making any decisions reliant upon them. (ID840289)

