

Marina Point, SW6



A great rental investment opportunity. 3 bedroom apartment on the 4th floor of this sought after riverside development on the Chelsea/ Fulham border benefiting from a large balcony overlooking the communal gardens with views towards the river.

1,129 SQ FT/ 104.9 SQ M | RECEPTION ROOM | 3 BEDROOMS | BATHROOM | EN-SUITE SHOWER ROOM | BALCONY



Guide Price £1,050,000

020 7937 9070
www.croftinternational.co.uk

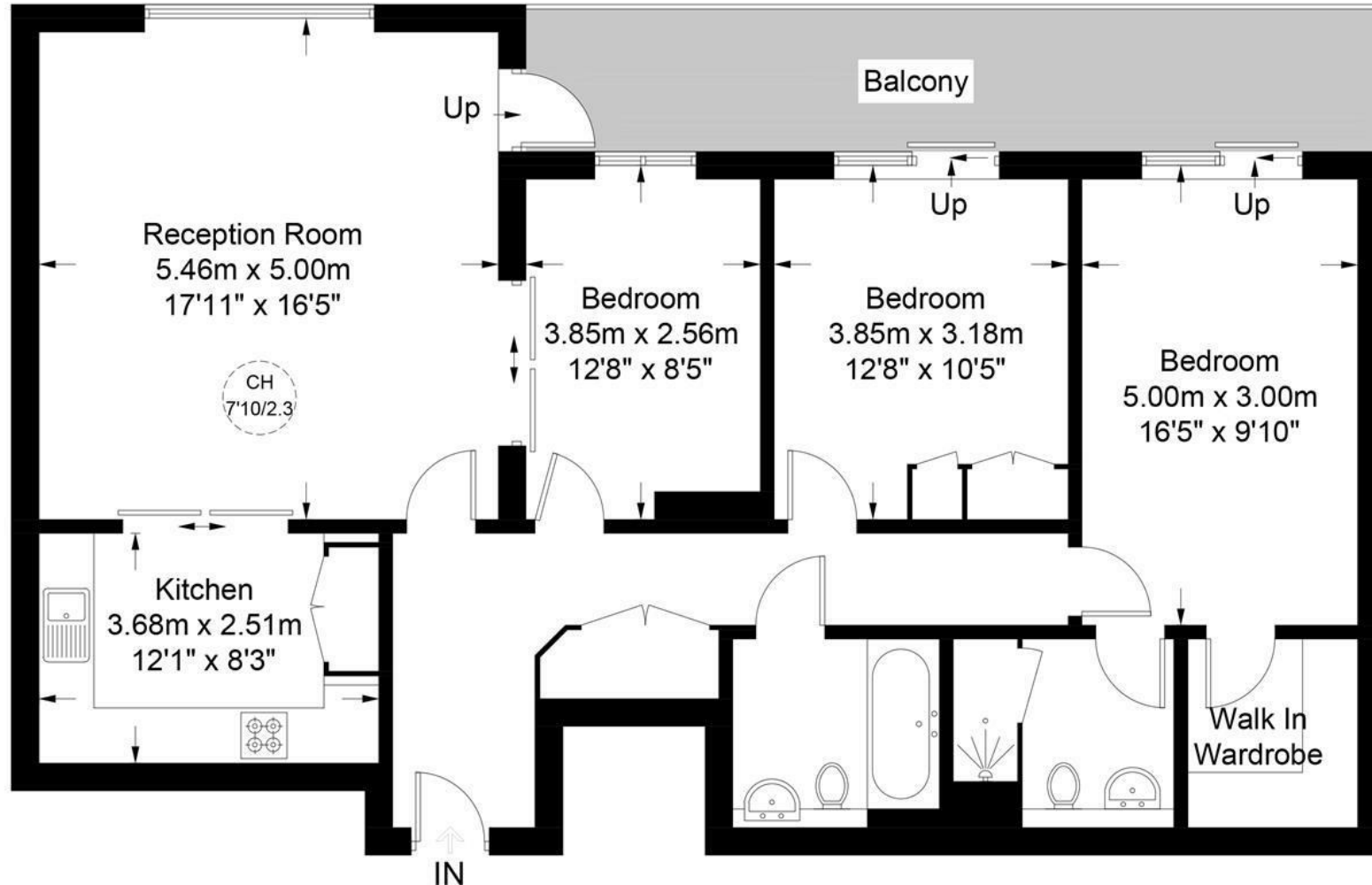
Leasehold





Marina Point, SW6

Approximate Gross Internal Area = 1129 sq ft / 104.9 sq m



Fourth Floor



**Certified
Property
Measurers**

This plan is for layout guidance only. Not drawn to scale unless stated. Windows and door openings are approximate. Whilst every care is taken in the preparation of this plan, please check all dimensions, shapes and compass bearings before making any decisions reliant upon them. (ID839697)

