

# HOLLAND HOUSE, FULHAM REACH W6



Available from 16 March 2026

A new 2-bedroom apartment located on the 2nd floor of this award winning development, boasting contemporary design and convenience. The spacious living area is accented with large windows that bring natural light, creating a bright and welcoming ambiance. Large open plan kitchen with stylish fixtures and modern appliances. It also benefits from Garden views and a balcony. Master bedroom with en-suite shower room and built in wardrobe, Second bedroom providing flexibility for guests or a home office. bathroom. Residents can enjoy the development amenities such as gym, swimming pool, spa, cinema room, games room, virtual golf and wine cellar , 24 hour security and concierge service. Fulham Reach is ideally located to take advantage of the picturesque riverside walk and cycle routes, as well as the cafes, pubs and restaurants by the River. Hammersmith underground station is walking distance and offers District, Piccadilly, Hammersmith and City Line services. Council Tax Hammersmith & Fulham Band G  
878.00 sq ft | 1 RECEPTION ROOM | 2 BEDROOMS | EN SUITE SHOWER ROOM | BATHROOM | KITCHEN |  
BALCONY | 24 HOUR CONCIERGE



**£900 Per Week**

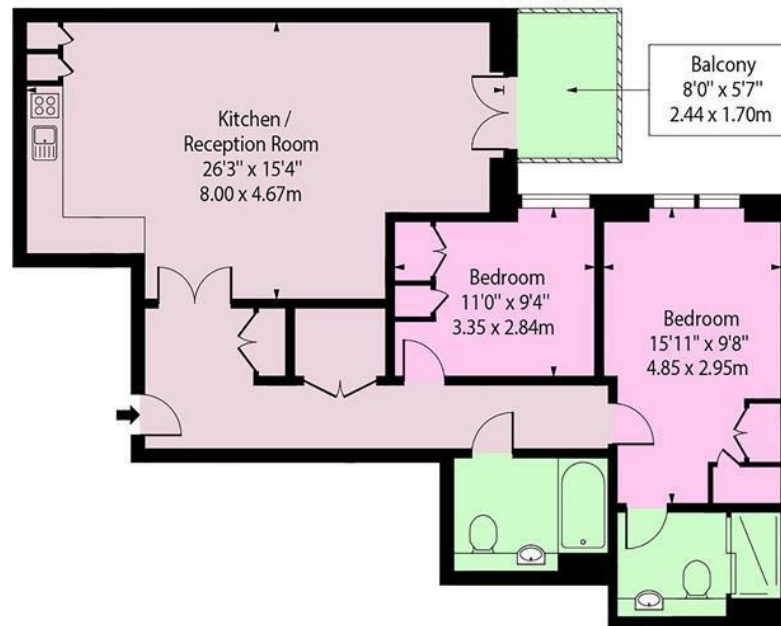
020 7937 9070  
[www.croft-international.com](http://www.croft-international.com)

**Unfurnished**





Fulham Reach, Parrs Way, W6



Second Floor

Approx Gross Internal Area 878 Sq Ft - 81.57 Sq M

For Illustration Purposes Only - Not To Scale Floor Plan by [www.epixandplans.com](http://www.epixandplans.com) Ref: No.24002

This floor plan should be used as a general outline for guidance only. Any intending purchaser or lessee should satisfy themselves by inspection, searches, enquiries and full survey as to the correctness of each statement. Any areas, measurements or distances quoted are approximate and should not be used to value a property or be the basis of any sale or let.

