

Southwell Gardens, SW7



Available from March 11th, 2026

Presenting a spacious 2 bedroom flat set within an exceptionally maintained period building. The property comprises of an open-plan reception room & kitchen; master double bedroom and en suite bathroom; 2nd double bedroom; separate bathroom. The property boasts a modern finish throughout and is located in the heart of South Kensington.

1077.00 sq ft | 1 RECEPTION ROOM | 2 BEDROOMS | EN SUITE SHOWER ROOM | 2 BATHROOMS | KITCHEN



£1,250 Per Week

020 7937 9070
www.croft-international.com

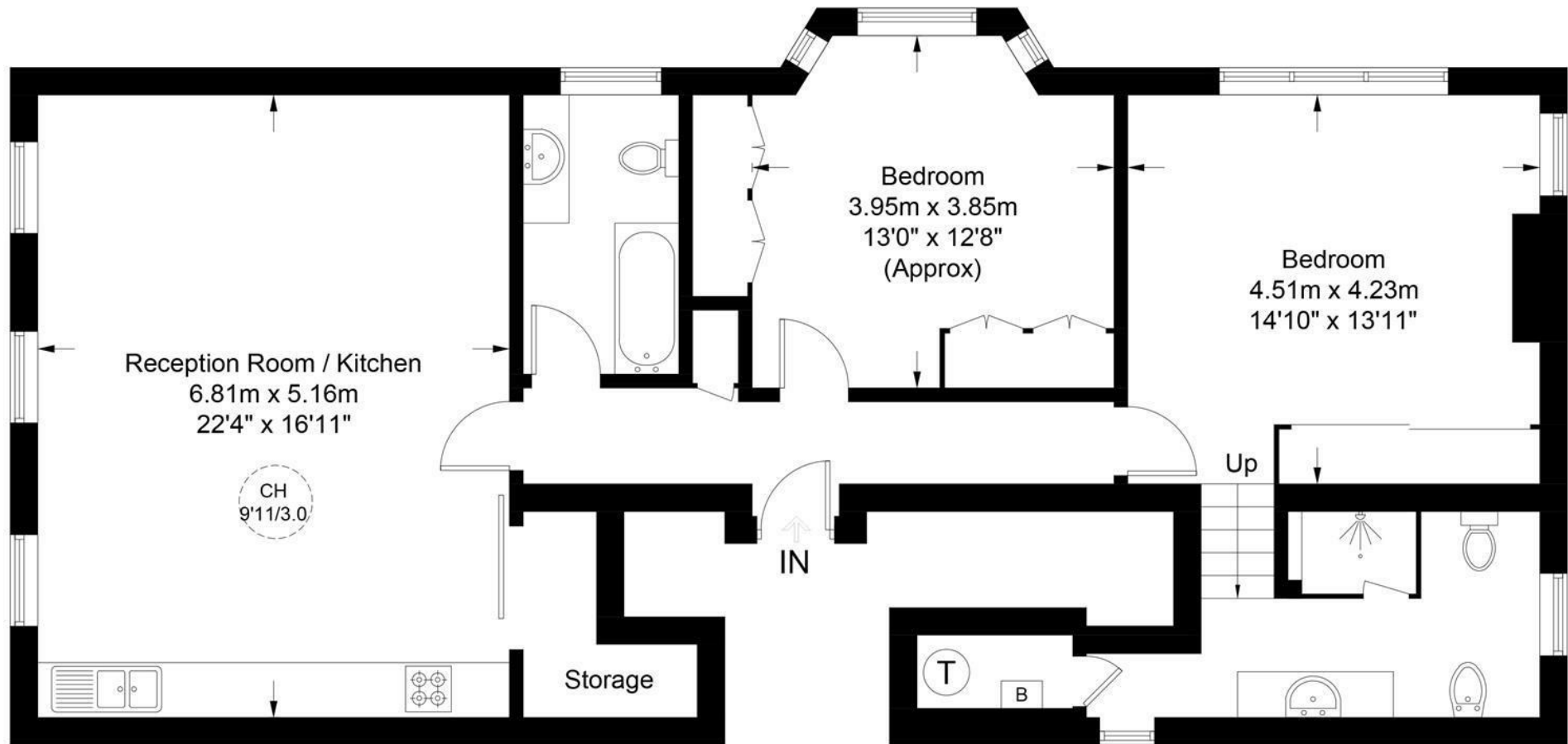
Furnished/unfurnished





Southwell Gardens, SW7

Approximate Gross Internal Area = 1077 sq ft / 100.1 sq m



Second Floor

This plan is for layout guidance only. Not drawn to scale unless stated. Windows and door openings are approximate. Whilst every care is taken in the preparation of this plan, please check all dimensions, shapes and compass bearings before making any decisions reliant upon them. (ID758952)

