

Redcliffe Gardens, SW10



Bright 4th Floor walk up one bedroom flat with wood floors throughout with the benefit of a dining/study area. Ideally located for all the amenities of the Fulham Road and the restaurants and bars of Hollywood Road. Kensington & Chelsea Council tax band D.
Deposit required equivalent to 5 weeks rent (Photos for presentation only some furniture may vary)

509.00 sq ft | 1 RECEPTION ROOM | 1 BEDROOM | BATHROOM | KITCHEN



£495 Per Week

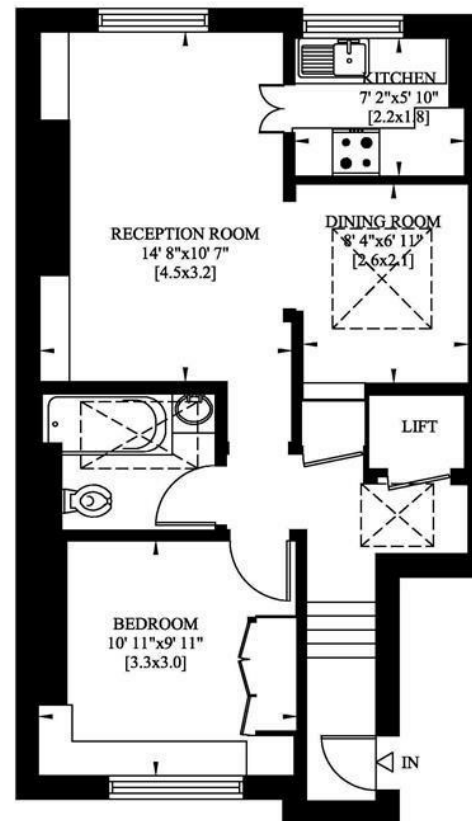
020 7937 9070
www.croft-international.com

Furnished



REDCLIFFE GARDENS
LONDON SW10

Gross Internal Area: 47 Sq. metres
509 Sq. feet



FOURTH FLOOR

