

# Princes Gate, SW7





Wonderful opportunity to rent a luxurious 9,050 sq ft houses which is presented in immaculate conditions with the benefit of a lift serving all 6 floors. The lower ground floor consists of an informal media room, dining room and separate kitchen. The ground floor comprises an entrance hall leading onto a wonderful double reception room with a further sitting room/formal dining room to the rear. The first floor boasts a grand reception room with excellent ceiling heights, a balcony and a terrace that enjoys incredible views overlooking Prince Consort Road, towards the Royal Albert Hall. This level also has a large study. The indulgent master bedroom suite occupies the entire second floor with a further 5 bedrooms arranged over the upper levels; along with additional reception space and use of the superb walled roof garden above.

Princes Gate is a terrace of stucco fronted period properties built around the time of the Great Exhibition. It runs north from Hyde Park to the very heart of South Kensington taking in such sights as the Natural History Museum and the Victoria and Albert Museum

9050.00 sq ft | 6 BEDROOMS | SHOWER ROOM | 2 EN SUITE SHOWER ROOMS | 3 ENSUITE BATHROOMS | SEPARATE WC | GUEST WC | 4 RECEPTION ROOMS | 2 DINING ROOMS | OFFICE | KITCHEN | GARDEN | LIFT



**SHORT LET**  
**£36,400 Per Week**

020 7937 9070  
[www.croftinternational.co.uk](http://www.croftinternational.co.uk)

**Furnished**







# LONDON SW7

Gross Internal Area = 840 sq. metres

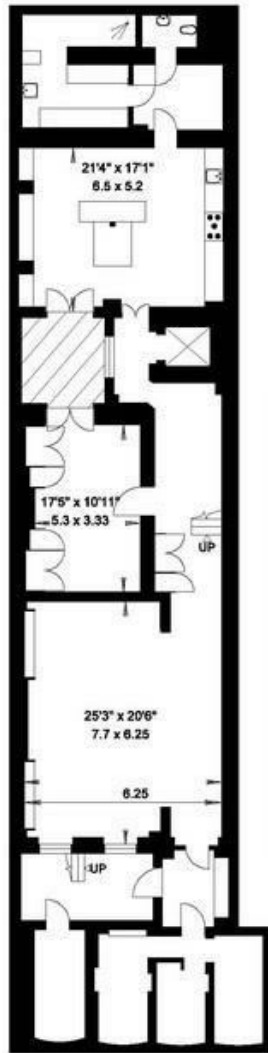
9050 sq. feet

(Including Vaults & Shaded Lightwell)

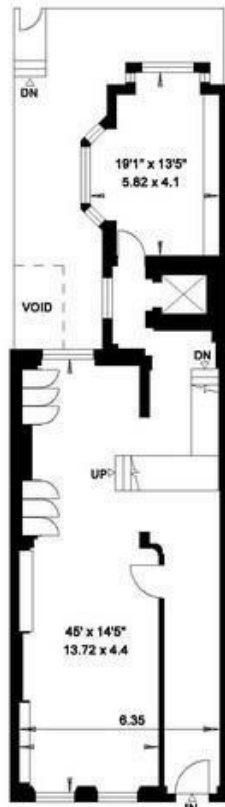
(Excluding Walled Terrace Level)

Walled Terrace Level = 46 sq. metres

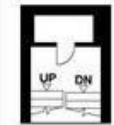
497 sq. feet



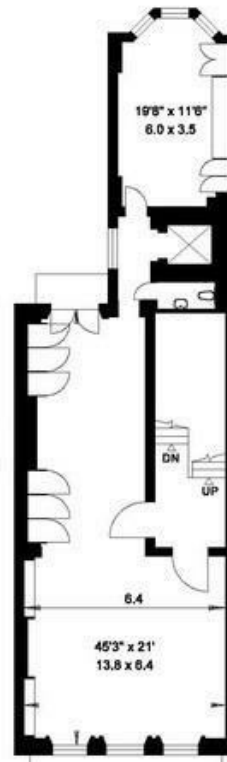
LOWER GROUND FLOOR



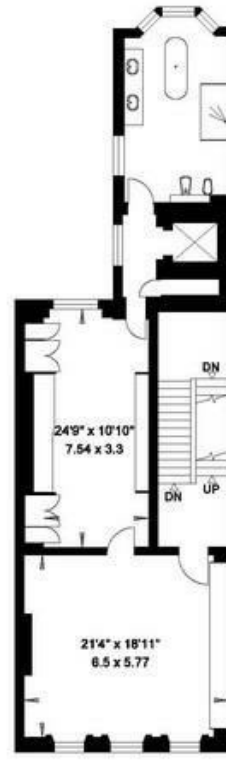
GROUND FLOOR



LOWER  
FIRST FLOOR



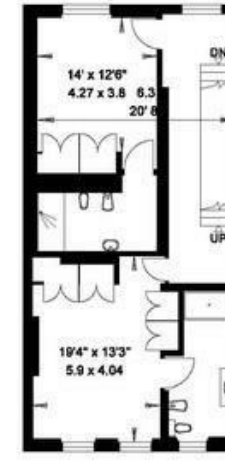
FIRST FLOOR



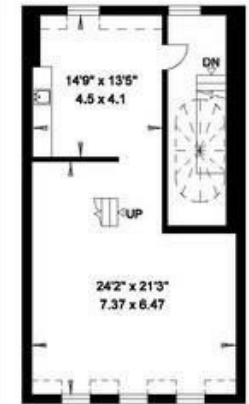
SECOND FLOOR



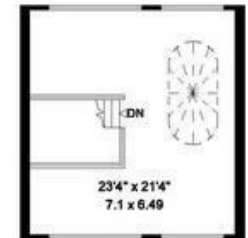
THIRD FLOOR



FOURTH FLOOR



FIFTH FLOOR



WALLED ROOF TERRACE



