

# Halsey Street, SW3





First floor flat in period conversion comprising two double bedrooms one single bedroom, reception room with open plan kitchen, Master bedroom with en-suite shower room, 2nd Bathroom and balcony. ideally located moments from all the amenities of Sloane Square and South Kensington. The flat is offered on a furnished basis with wood floors in living areas. Kensington & Chelsea Council Tax Band G. Deposit equivalent to 5 weeks rent

901.00 sq ft | RECEPTION ROOM | 2 DOUBLE BEDROOMS | ONE WITH EN SUITE SHOWER ROOM |  
3RD SINGLE BEDROOM | BATHROOM | OPEN PLAN KITCHEN | BALCONY



**£1,200 Per Week**

**Furnished**

020 7937 9070  
[www.croft-international.com](http://www.croft-international.com)

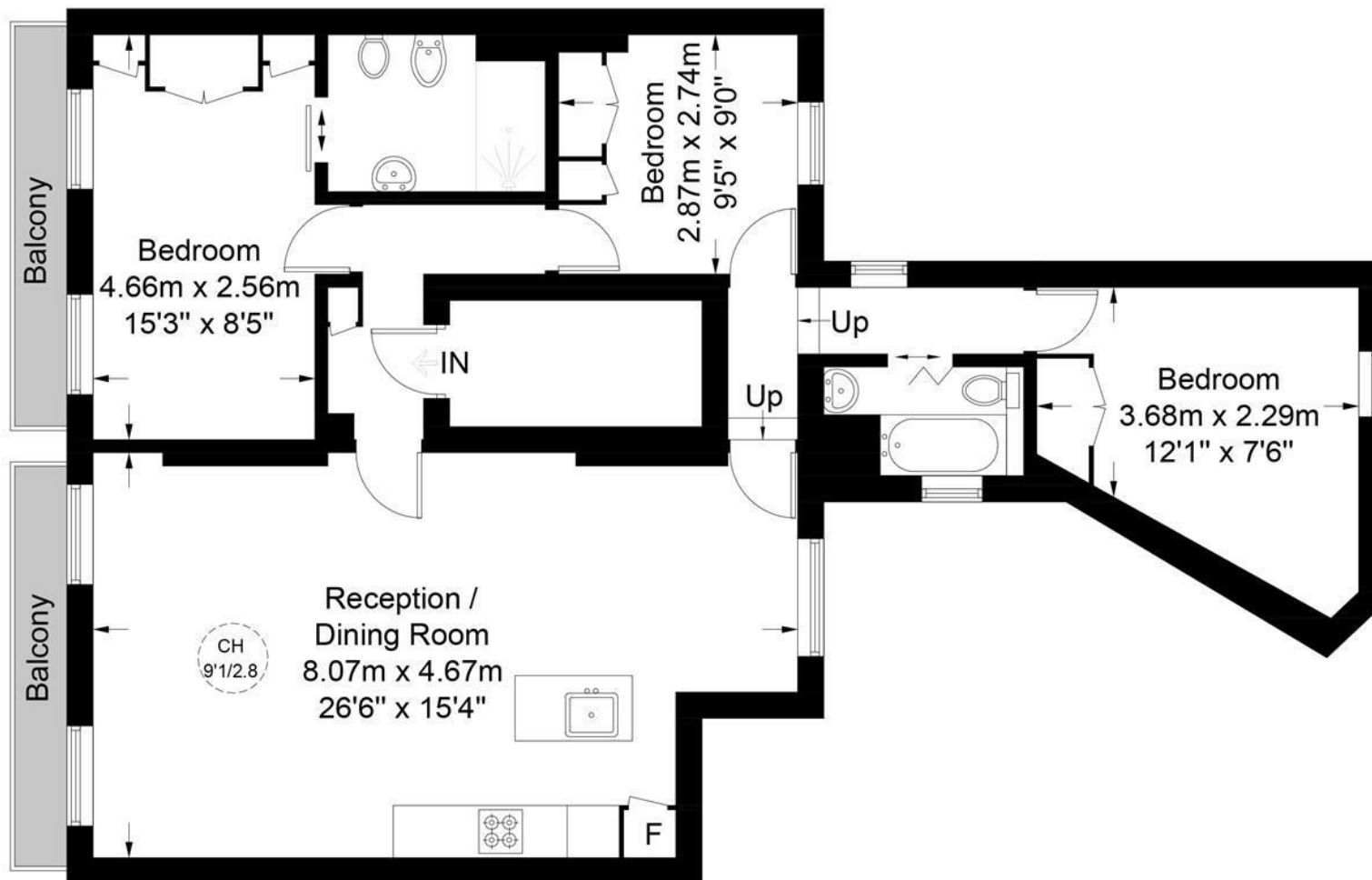






## Halsey Street, SW3

Approximate Gross Internal Area = 901 sq ft / 83.7 sq m



### First Floor

This plan is for layout guidance only. Not drawn to scale unless stated. Windows and door openings are approximate. Whilst every care is taken in the preparation of this plan, please check all dimensions, shapes and compass bearings before making any decisions reliant upon them. (ID783017)



