

# Pearson Square, W1T



An three bedroom apartment on the 6th floor of this sought after development in the heart of the West End within walking distance of the luxury boutiques and cafes on Marylebone High Street and transport facilities of Oxford Circus. The apartment benefits from a study, a private balcony enjoying panoramic views, 24 hour concierge, gym, business suite and a private 20 seat cinema. Photos as previously furnished. Westminster Council Tax Band G.

1070.00 sq ft | 1 RECEPTION ROOM | 3 BEDROOMS | 2 BATHROOMS | KITCHEN | BALCONY | 24 HR CONCIERGE|  
RESIDENTS GYM AND CINEMA ROOM  
(Photos as Previously furnished)



**£1,650 Per Week**

020 7937 9070  
[www.croft-international.com](http://www.croft-international.com)

**Unfurnished**

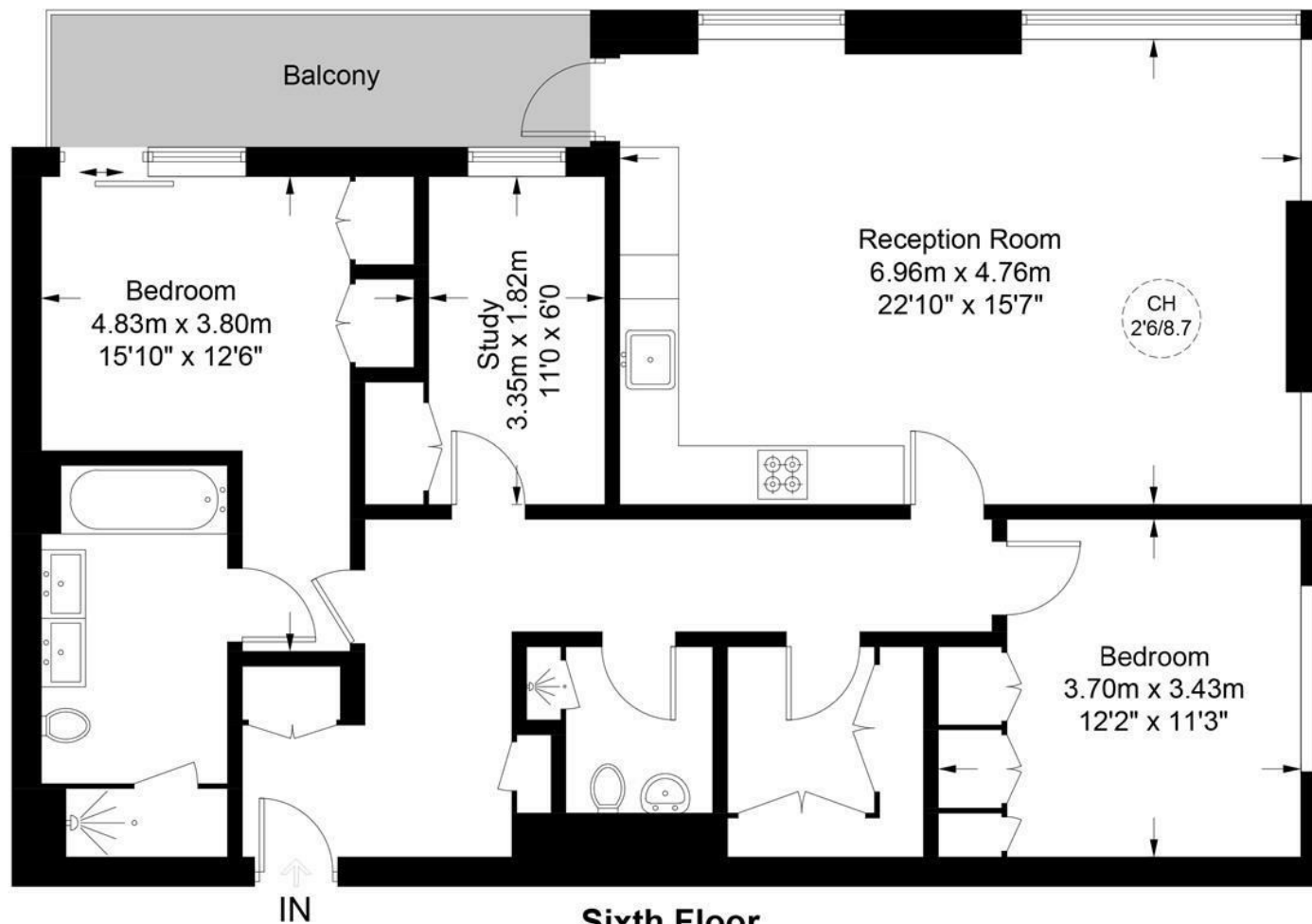






## Pearson Square, W1T

Approximate Gross Internal Area = 1070 sq ft / 99.4 sq m



**Sixth Floor**

This plan is for layout guidance only. Not drawn to scale unless stated. Windows and door openings are approximate. Whilst every care is taken in the preparation of this plan, please check all dimensions, shapes and compass bearings before making any decisions reliant upon them. (ID798446)



