

# Pearson Square, W1T



An exceptional one bedroom flat on the 6th floor of this exclusive development in the heart of Fitzrovia with stunning views over the square benefiting from a residents' Gym, private cinema, a club room and 24 hour concierge.

The apartment comprises a double bedroom with good built in storage, shower room with WC, open plan living and entertaining space with fully fitted kitchen and dining area, and benefits from a balcony overlooking the main square. Further benefits include, Engineered timber flooring, Integrated kitchen appliances, Underfloor heating ,Comfort cooling to reception rooms and bedrooms. Council Westminster Band E- Deposit required Equivalent to 5 Weeks Rent

636.00 sq ft | 1 RECEPTION ROOM | 1 BEDROOMS | EN SUITE SHOWER ROOM | 1 BATHROOMS | KITCHEN



**£1,200 Per Week**

020 7937 9070  
[www.croft-international.com](http://www.croft-international.com)

**Furnished**

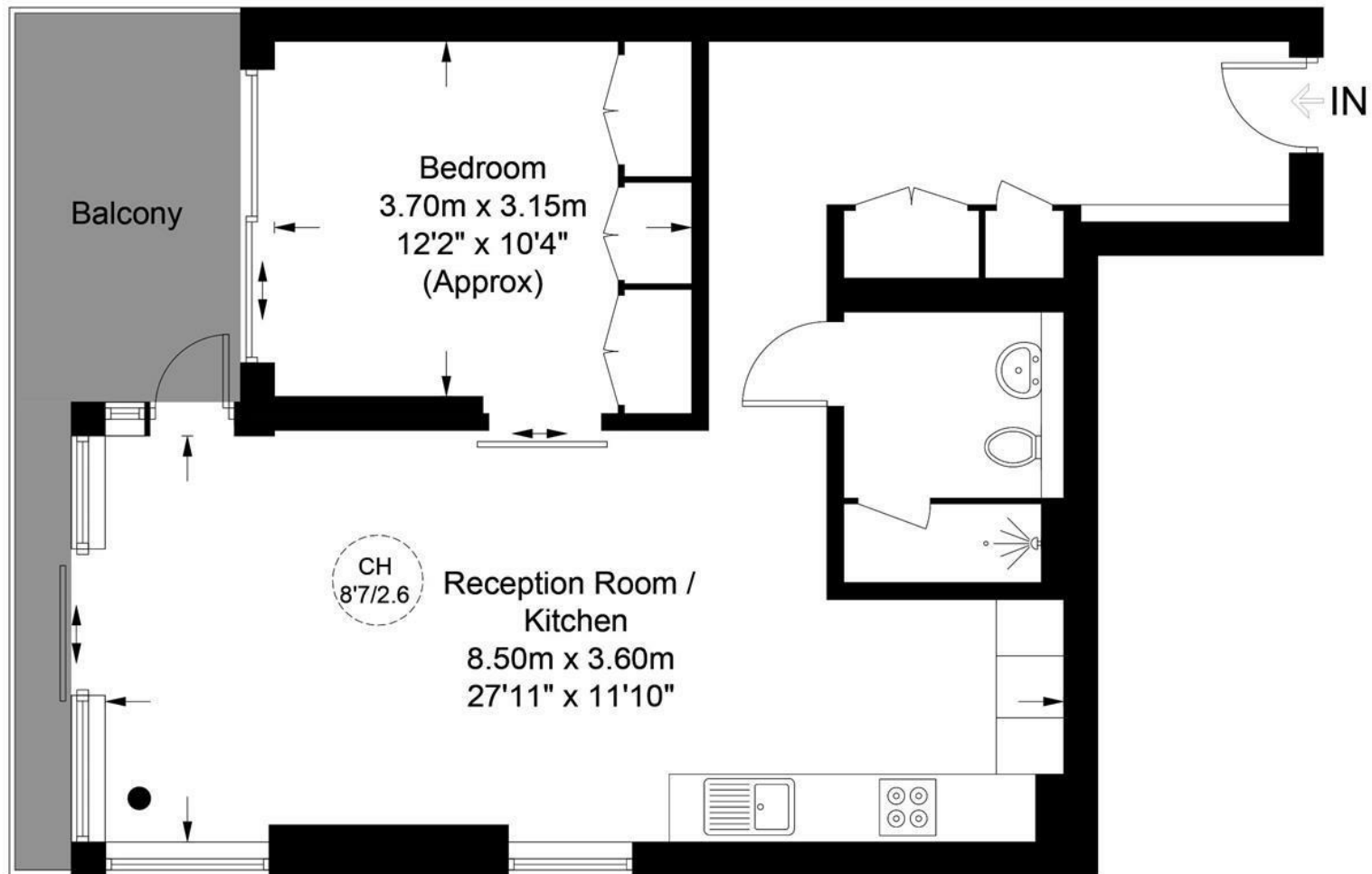






## Pearson Square, W1T

Approximate Gross Internal Area = 636 sq ft / 59.1 sq m



### Sixth Floor

This plan is for layout guidance only. Not drawn to scale unless stated. Windows and door openings are approximate. Whilst every care is taken in the preparation of this plan, please check all dimensions, shapes and compass bearings before making any decisions reliant upon them. (ID721120)



