

Hans Road, SW3



Presented in excellent order, well laid out, bright two bedroom apartment at this beautiful red brick 90 century building on Hans Road, directly opposite to the world famous Harrods department store. A large spacious reception room overlooks Harrods. It has a master bedroom with an on suite bathroom, second bedroom and a second bathroom. Hans Road is located in the heart of Knightsbridge ideally access to the shopping facilities in Sloane Street and Chelsea. A short walk away from the Hyde Park.

**Click here to see the virtual tour**  
<https://my.matterport.com/show/?m=F6GKGT6qZa4>

1044.11 sq ft | 1 RECEPTION ROOM | 2 BEDROOMS | EN SUITE SHOWER ROOM | 1 BATHROOMS | KITCHEN



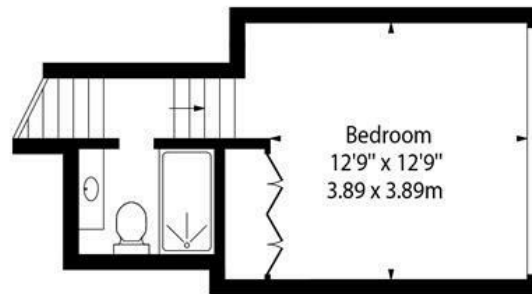
**Guide Price £2,450,000**

020 7937 9070  
[www.croft-international.com](http://www.croft-international.com)

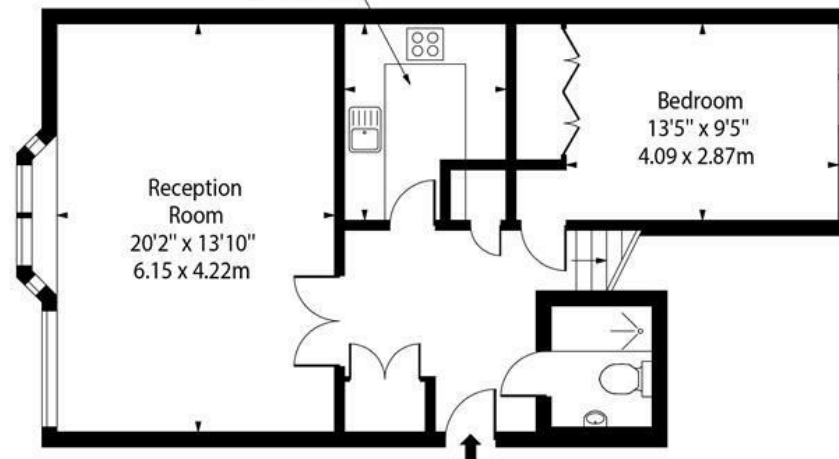
**Share of Freehold**



Hans Place, SW1X



Kitchen  
9'8" x 8'3"  
2.95 x 2.51m



Approx Gross Internal Area 947 Sq Ft - 87.97 Sq M

This floor plan should be used as a general outline for guidance only and does not constitute in whole or in part an offer or contract.  
Any intending purchaser or lessee should satisfy themselves by inspection, searches, enquiries and full survey as to the correctness of each statement.  
Any areas, measurements or distances quoted are approximate and should not be used to value a property or be the basis of any sale or let.

