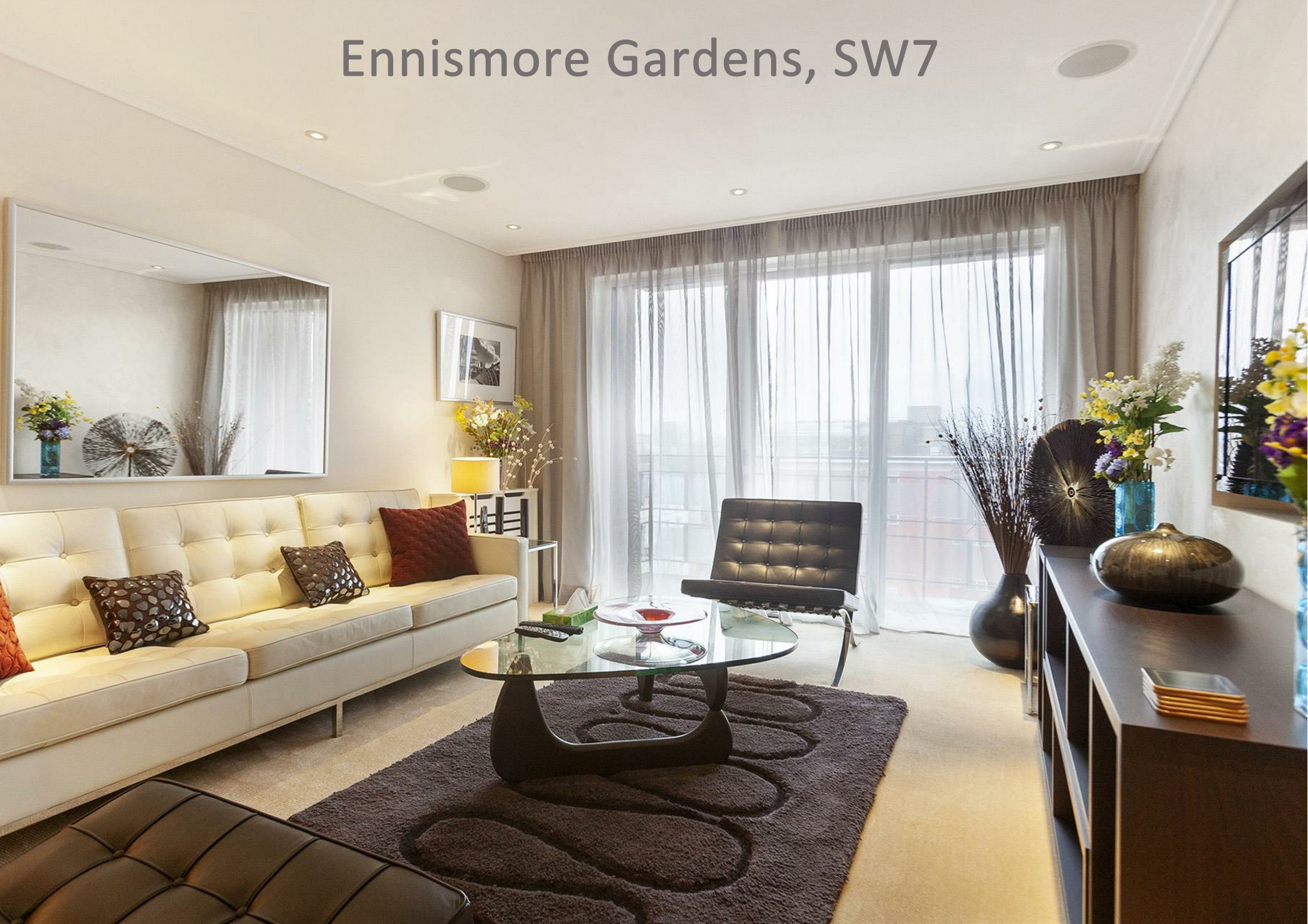


Ennismore Gardens, SW7



A luxuriously refurbished 8th-floor apartment with a bright south-west aspect, set within a prestigious modern development just minutes from Hyde Park and the world-class amenities of Knightsbridge. The building offers a 24-hour concierge service, underground parking, and beautifully maintained communal gardens.

The apartment features a bespoke kitchen and dining area, a modern reception room opening onto a private balcony, and high-quality finishes throughout. Kingston House is ideally located in Ennismore Gardens, providing residents with immediate access to Hyde Park and the vibrant lifestyle of Knightsbridge.

[Click here to see the virtual tour](https://my.matterport.com/show/?m=918VH0nntus)
<https://my.matterport.com/show/?m=918VH0nntus>

1485.43 sq ft | 1 RECEPTION ROOM | 2 BEDROOMS | EN SUITE SHOWER ROOM | 2 BATHROOMS | KITCHEN

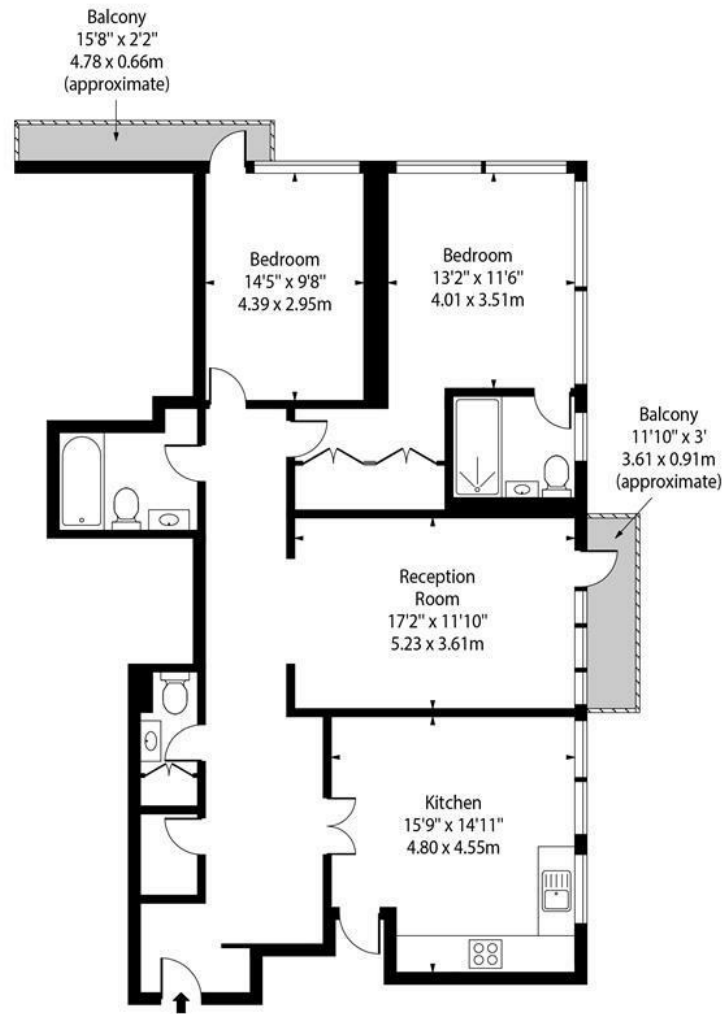


Guide Price £3,400,000

020 7937 9070
www.croft-international.com



Kingston House South,
Ennismore Gardens, SW7



Third Floor

Approx Gross Internal Area 1233 Sq Ft - 114.55 Sq M

This floor plan should be used as a general outline for guidance only and does not constitute in whole or in part an offer or contract.
Any intending purchaser or lessee should satisfy themselves by inspection, searches, enquiries and full survey as to the correctness of each statement.
Any areas, measurements or distances quoted are approximate and should not be used to value a property or be the basis of any sale or let.

