

Fulham Road, SW3



SHORT LET

A lovely well appointed furnished 2 bedroom flat, located on the third floor of a 1960's development with a lift benefiting from wood floors throughout mood lighting and bespoke fixtures. the building is ideally located on Brompton Cross moments from all the amenities of Knightsbridge, South Kensington and the King's Road.  
Council Kensington & Chelsea Band E  
(Please note some furniture on the photos may vary and prices may differ depending on the season)

745.00 sq ft | 1 RECEPTION ROOM | 2 BEDROOMS | EN SUITE SHOWER ROOM | BATHROOM | KITCHEN | LIFT



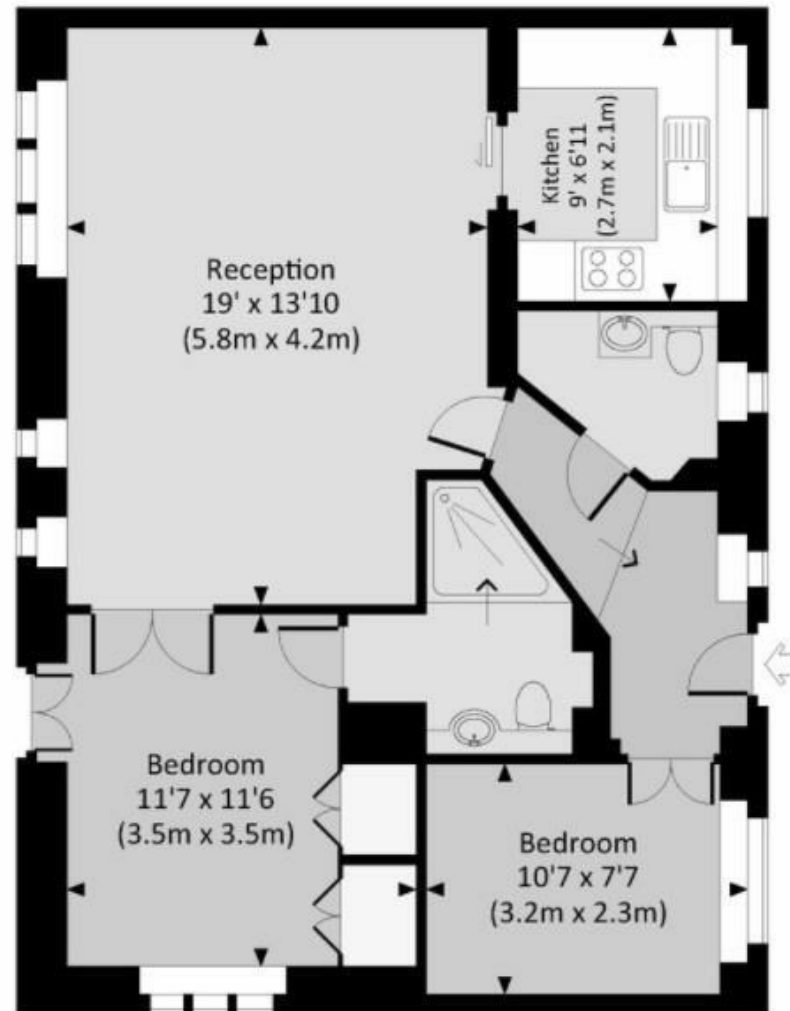
Furnished

020 7937 9070  
[www.croftinternational.co.uk](http://www.croftinternational.co.uk)



# KEPPEL HOUSE FULHAM ROAD, SW3

Approx. gross internal area  
745 Sq.Ft. / 69.2 Sq.M.



SECOND FLOOR

