



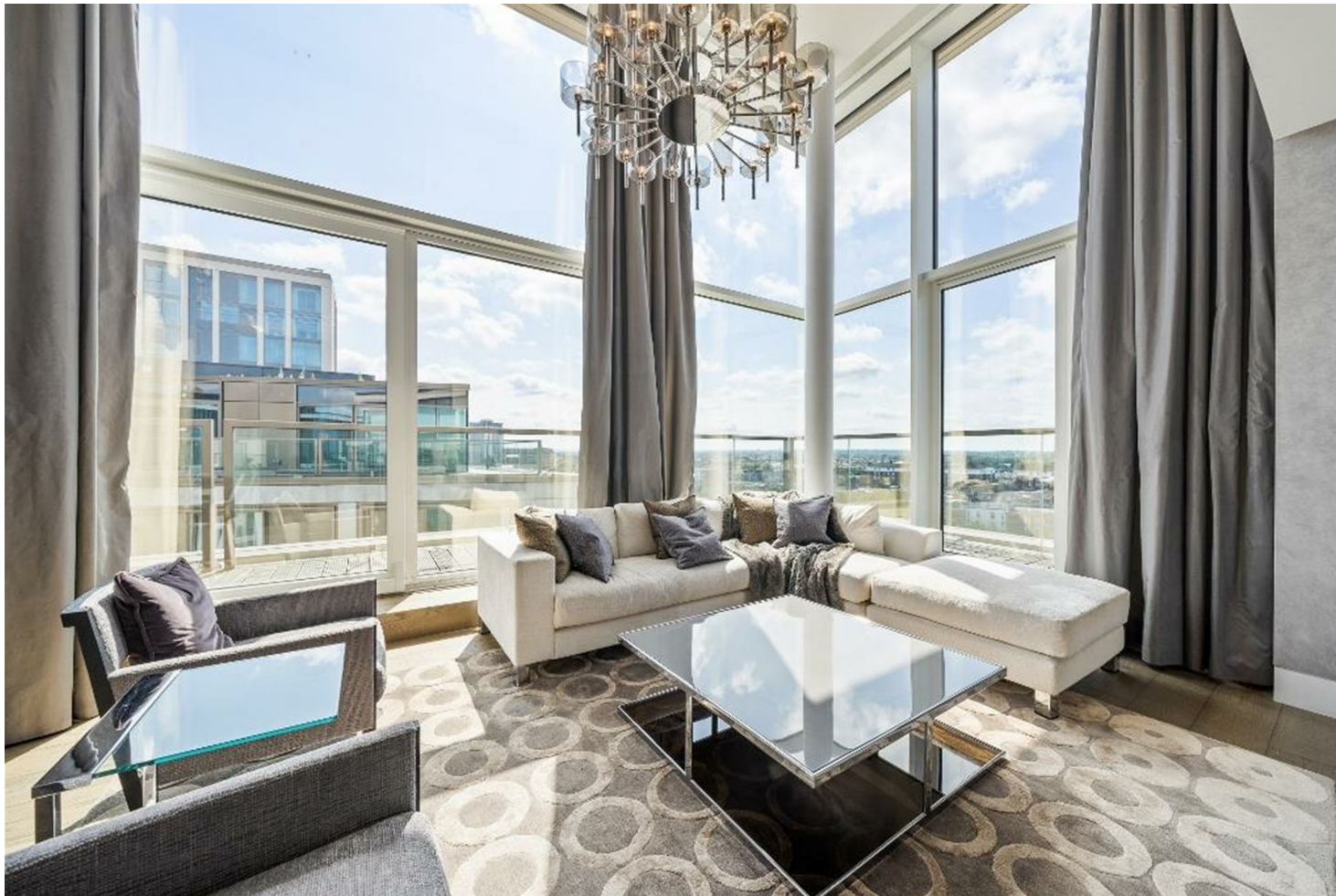
CROFT
INTERNATIONAL



Kensington High Street, W14

An exceptional 3 bedroom penthouse set on the 11th and 12th floors of this landmark development. The property features a spectacular reception room with a double height ceiling that is filled with natural light commanding stunning views over the London skyline and access to a wrap around balcony. The property benefits from 2 underground parking spaces, 24 hour concierge and security and a resident's leisure suite comprising gym, pool, sauna, steam room and a Cinema room. This exclusive development is well located for the amenities of Kensington High Street and the green spaces of Holland Park.

1911.00 sq ft | 1 RECEPTION ROOM | 3 BEDROOMS | EN SUITE SHOWER ROOM | 3 BATHROOMS | KITCHEN



Guide Price £4,800,000

Share of Freehold

020 7937 9070
www.croft-international.com

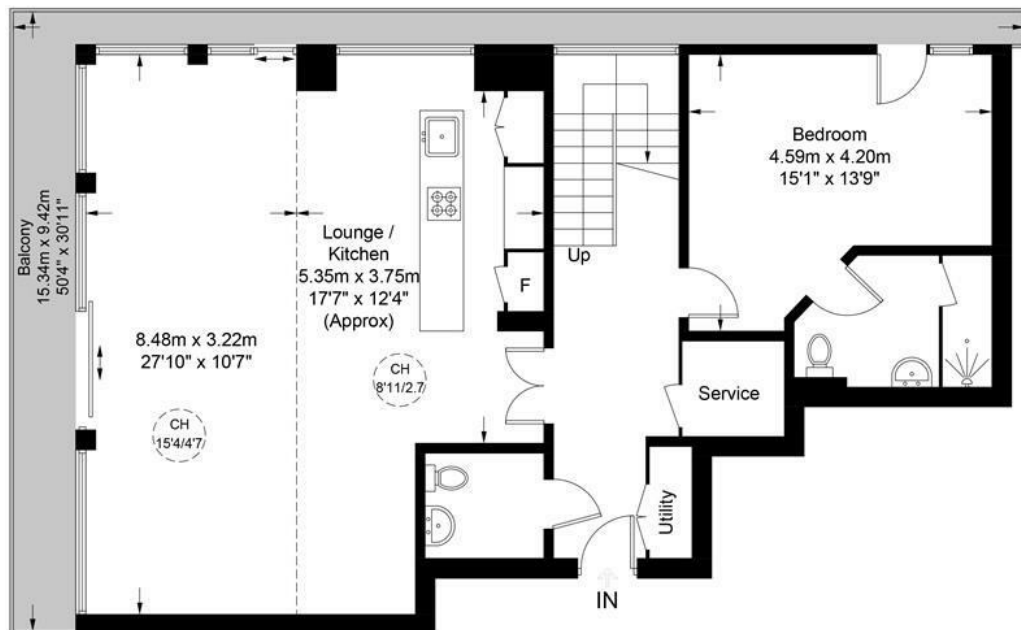




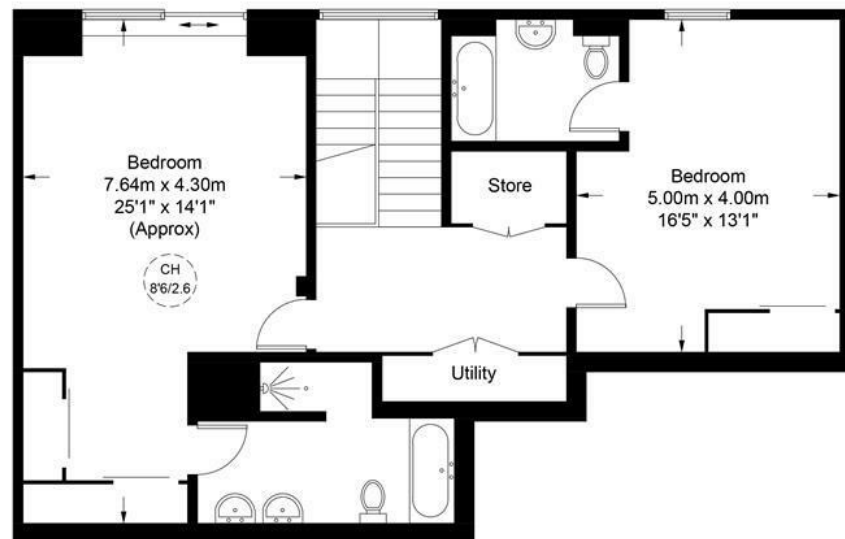
Wolfe House, W14

Approximate Gross Internal Area = 1911 sq ft / 177.5 sq m

Balcony Area = 173 sq ft / 16.1 sq m



Eleventh Floor



Twelfth Floor

This plan is for layout guidance only. Not drawn to scale unless stated. Windows and door openings are approximate. Whilst every care is taken in the preparation of this plan, please check all dimensions, shapes and compass bearings before making any decisions reliant upon them. (ID787709)

