

Merchant Square East, W2



This amazing apartment finds itself on the sixth floor of this ideally located building in the Paddington Basin overlooking the Canal. The building has a dedicated building manager, a concierge, lift service and secure underground parking.

This stunning apartment comprises spacious living and entertaining space with a beautiful reception room with superb views of the Grand Union Canal, a splendid modern fitted open plan kitchen, three bedrooms(with water views), two bathrooms and ample storage space.

The apartment offers easy access to superb transport links such as Paddington Train Station (Elizabeth Line, Bakerloo, Hammersmith & City, Circle, District lines and Heathrow Express) and Edgware Road (Circle, District and Bakerloo lines).

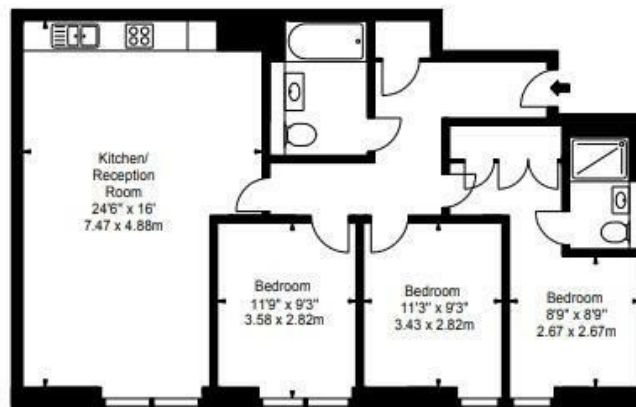
960.00 sq ft | 1 RECEPTION ROOM | 3 BEDROOMS | EN SUITE SHOWER ROOM | 2 BATHROOMS | KITCHEN



**Guide Price £1,650 Per
Week**

**020 7937 9070
www.croft-international.com**





FLAT 609
4B MERCHANT SQUARE EAST
LONDON W2

Sixth Floor

Approx Gross Internal Area*
960 Sq Ft - 89.18 Sq M

* As Defined by RICS - Code of Measuring Practice

Illustration For Identification Purposes Only. Not to Scale
All Calculations include Any/All Areas Under 1.5m Head Height.

Surveyed and Drawn by
BKR
Surrey Hill House, 2-7 Surrey Hill Road
London, SW14 2UG
Tel: 0845 237 2023
Fax: 0845 237 2024
info@bkr.co.uk
www.bkr.co.uk
© BKR 2015

