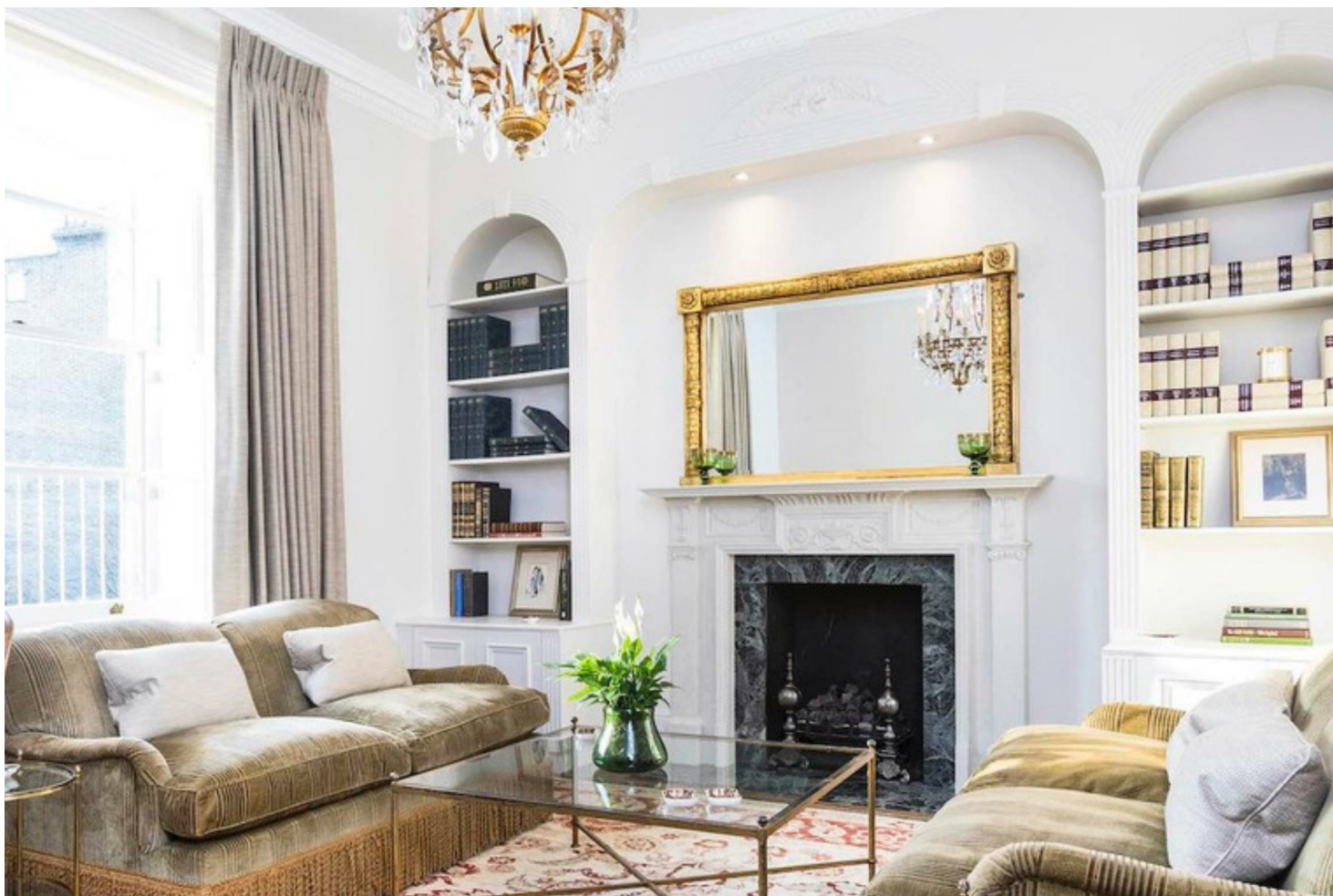


, W14



Presenting a wondrous opportunity in the heart of Holland Park & Kensington. The property consists of multiple living areas and separate entertainment areas. An extended freshly landscaped garden area. A double garage with extra parking spaces in the mansion entrance. Luxury amenities such as a sauna, gym, guest rooms in addition to family bedrooms and 2 staff quarters. Holland Villas Road boasts a private 24hr security service, and is within easy reach of all Holland Park & Kensington High Street restaurants, and shops while remaining quietly situated on this sought after address.

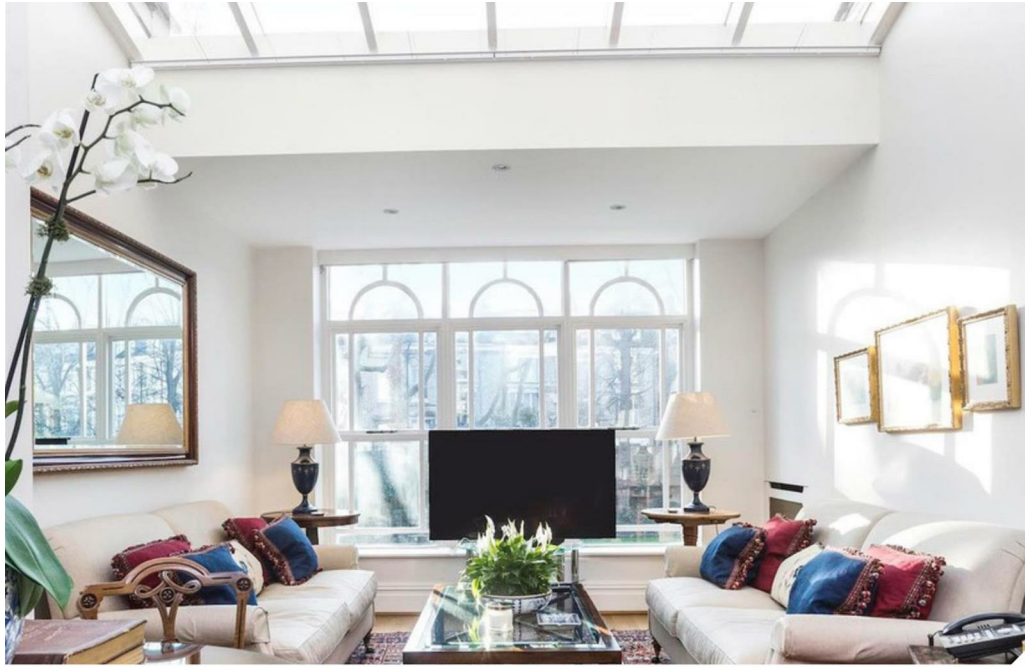
7244.00 sq ft | 0 RECEPTION ROOM | 7 BEDROOMS | EN SUITE SHOWER ROOM | 7 BATHROOMS | KITCHEN



Guide Price £17,500,000

020 7937 9070
www.croft-international.com

Freehold



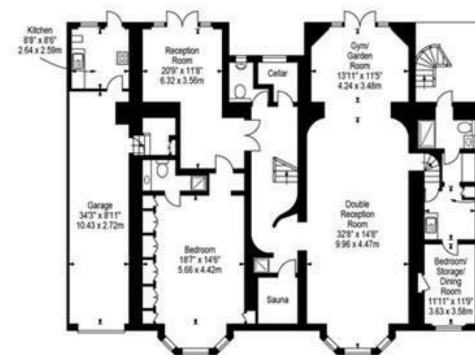
Holland Villas Road W14



First Floor



Second Floor



Lower Ground Floor



Ground Floor

Approx Gross Internal Area 7244 Sq Ft - 673.00 Sq M
 Floor Plan Supplied For Identification Purposes Only And May Not Be Accurate
 Floor Plan by www.elegantmediadownload.com

