

# Hans Place, SW1X



A modern 2 bedroom ( 1 double, one single) duplex apartment refurbished and furnished to exacting standards combining state of the art technology with exquisite design. This stunning apartment benefits from a large reception room with high ceilings and is set in a red brick Victorian conversion in this sought after garden square in the heart of Knightsbridge. Hans Place is located to the south of the Brompton Road moments from Harrods, the world class shopping on Sloane Street and the green spaces of Hyde Park.

Kensington & Chelsea Council Tax Band G, Deposit required equivalent to 6 weeks rent

973.00 sq ft | 1 RECEPTION ROOM | 2 BEDROOMS | EN SUITE SHOWER ROOM | 2 BATHROOMS | KITCHEN



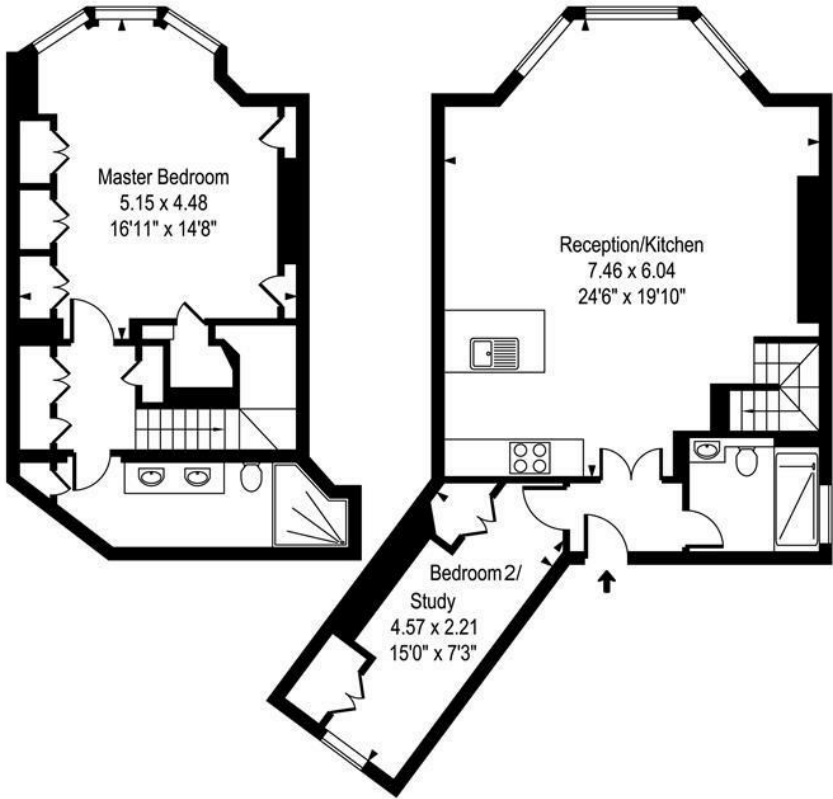
**£1,400 Per Week**

020 7937 9070  
[www.croftinternational.co.uk](http://www.croftinternational.co.uk)

**Furnished**



# Hans Place SW1



Lower Ground Floor

Ground Floor

**Approx Gross Internal Area 973 Sq Ft -90.40 Sq M**

Whilst every attempt has been made to ensure the accuracy of the floor plan contained here, measurements of the doors, windows, rooms and any other items are approximate and no responsibility is taken for any error, omission, or mis-statement. This plan is for illustrative purposes only should be used as such by any prospective purchaser. The services, systems and appliances shown have not been tested and no guarantee as to their operability or efficiency can be given.

