

Ebury Street, SW1W



SHORT LET A well presented one bedroom flat situated on the 2nd floor this small period apartment building available for short let. Ideally located on the corner of South Eaton Place moments from all shops and restaurants on Elizabeth Street and within easy reach of Victoria Station and Sloane Square.

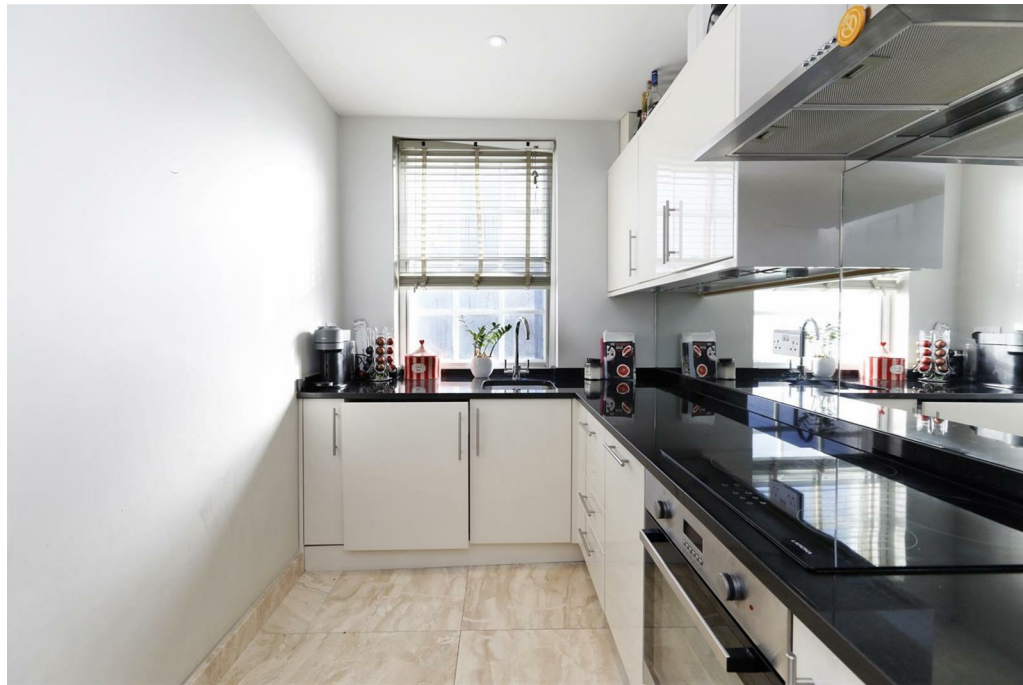
Price £200 per night

572.00 sq ft | 1 RECEPTION ROOM | 1 BEDROOMS | EN SUITE SHOWER ROOM | 1 BATHROOMS | KITCHEN

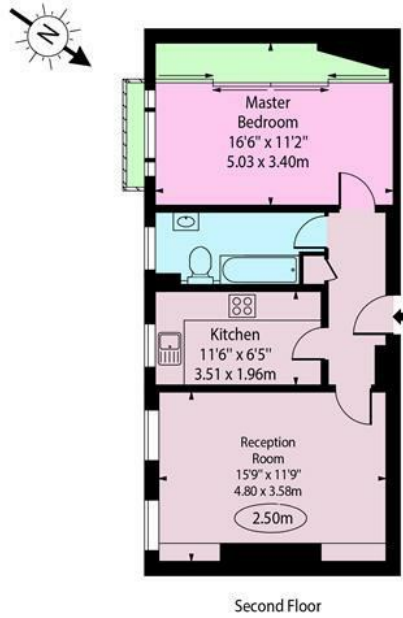


**Guide Price £1,400 Per
Week**

020 7937 9070
www.croft-international.com



Ebury Street, SW1W



Approx Gross Internal Area 572 Sq Ft - 53.14 Sq M

For Illustration Purposes Only - Not To Scale Floor Plan by www.epixandplans.com Ref: No.0021

This floor plan should be used as a general outline for guidance only. Any intending purchaser or lessee should satisfy themselves by inspection, searches, enquiries and full survey as to the correctness of each statement. Any areas, measurements or distances quoted are approximate and should not be used to value a property or be the basis of any sale or let.

