

Hans Place, SW1X



SHORT LET A lovely spacious contemporary furnished flat with two double bedrooms both with en-suite shower rooms available for short let. Large reception room , kitchen and guest cloakroom, the flat also benefits from underfloor heating. Situated on the ground floor of a well maintained period building overlooking the gardens in the heart of Knightsbridge moments from all the amenities of the Brompton Road and the world class shopping on Sloane Street. (photos for presentation some furniture may vary).Price £890 Per night.

1108.00 sq ft | 1 RECEPTION ROOM | 2 BEDROOMS | EN SUITE SHOWER ROOM | 2 BATHROOMS | KITCHEN

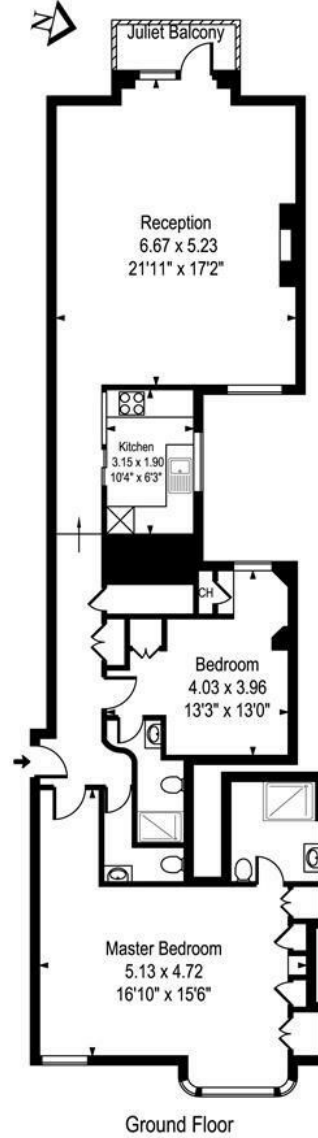


Guide Price £6,230 Per Week

020 7937 9070
www.croft-international.com



Hans Place
2 Bedroom Apartment



Approx Gross Internal Area **1108 Sq Ft - 102.96 Sq M**

Whilst every attempt has been made to ensure the accuracy of the floor plan contained here, measurements of the doors, windows, rooms and any other items are approximate and no responsibility is taken for any error, omission, or mis-statement. This plan is for illustrative purposes only should be used as such by any prospective purchaser.
The services, systems and appliances shown have not been tested and no guarantee as to their operability or efficiency can be given.

