

Pont Street, SW1X



SHORT LET A Beautiful 1,287 Sq ft flat, situated on the first floor of an elegant red brick period building in the heart of Knightsbridge available for short let. Moments from all the shops and amenities of Sloane Street and Brompton Road with an Elegant bright reception room with high ceilings and modern kitchen master bedroom with en-suite shower room second bedroom, second en-suite shower room, guest cloakroom, the flat further benefits from a lovely balcony from the reception room.

(Please note some furniture on the photos may vary)

£1,208 per night. Minimum stay is 7 day

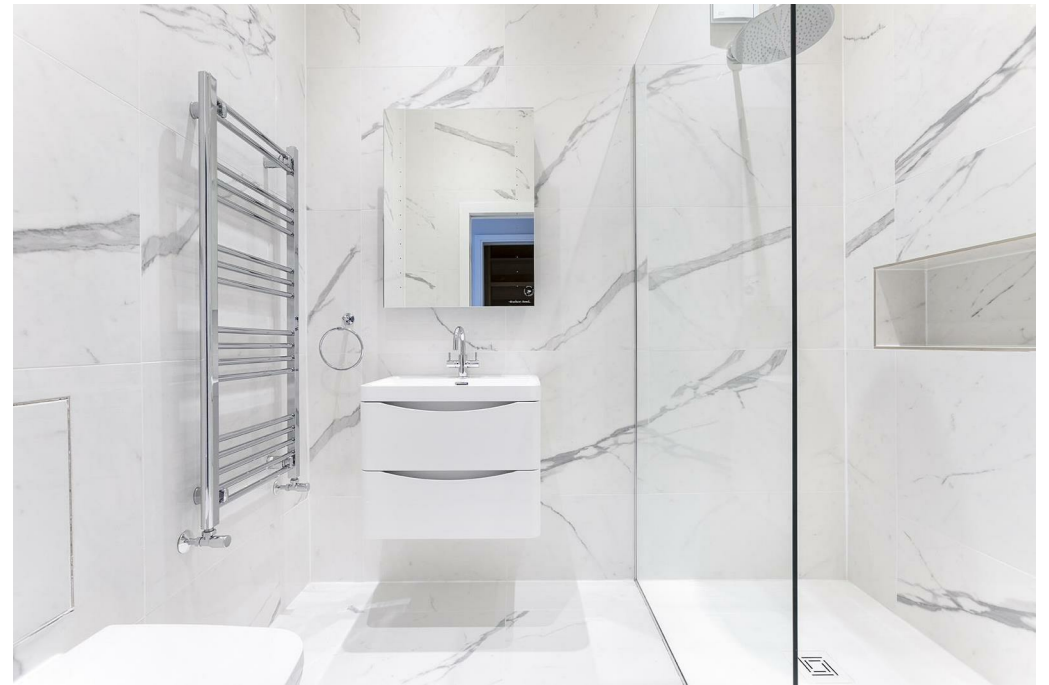
1287.00 sq ft | RECEPTION ROOM | 2 BEDROOMS | 2 EN SUITE SHOWER ROOMS | KITCHEN | BALCONY



£8,456 Per Week

020 7937 9070
www.croft-international.com

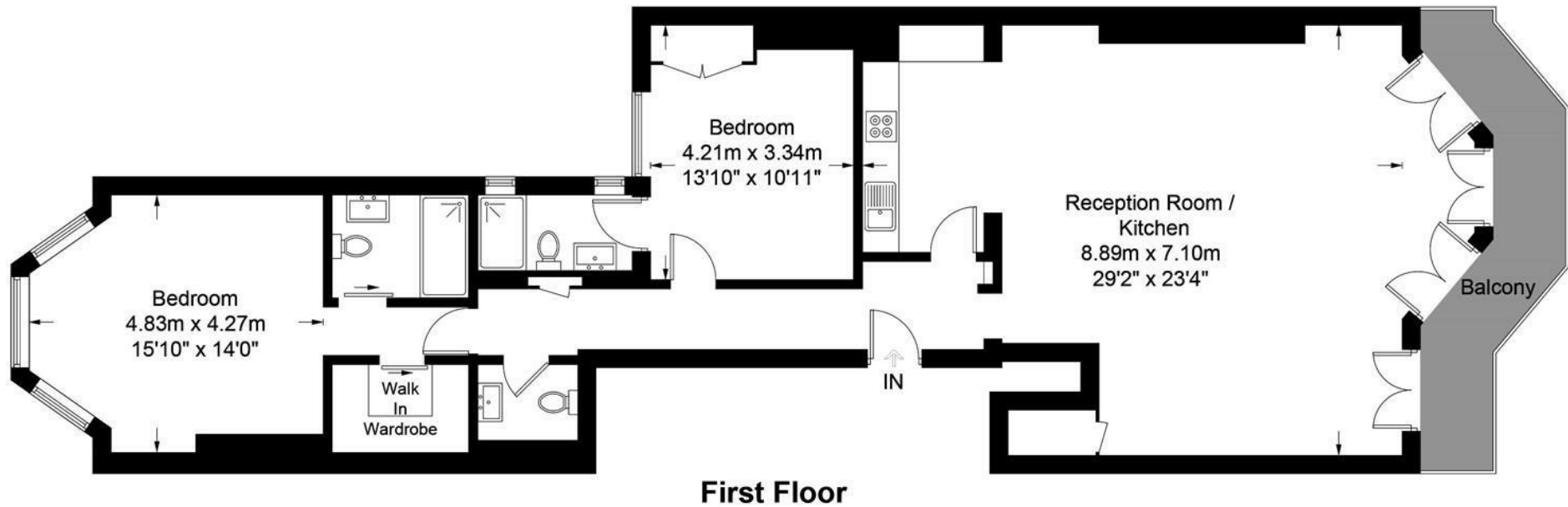
Furnished



Pont Street, SW1X



Approximate Gross Internal Area = 1287 sq ft / 119.6 sq m



This plan is for layout guidance only. Not drawn to scale unless stated. Windows and door openings are approximate. Whilst every care is taken in the preparation of this plan, please check all dimensions, shapes and compass bearings before making any decisions reliant upon them. (ID692086)

