

Saxon House, Kings Road Park SW6



Luxury brand new two bedroom apartment located on the sixth floor of Kings Road Park development. It features a bright living room, fitted kitchen with integrated appliances floor to ceiling glazing, underfloor heating, comfort cooling, bespoke kitchen cabinetry, timber flooring, recessed lighting. bedroom with ensuite shower room & built-in wardrobes 2nd bedroom bathroom, private balcony. Residents benefit from 25m swimming pool, vitality pool, steam room and sauna, gym and fitness studios. Further facilities include a games room, virtual golf room, two cinemas, private meeting rooms, a private dining room, and a residents' lounge with an atrium courtyard garden Hammersmith & Fulham council tax band G

Virtual Tour: <https://my.matterport.com/show/?m=1yU42APzEqF>

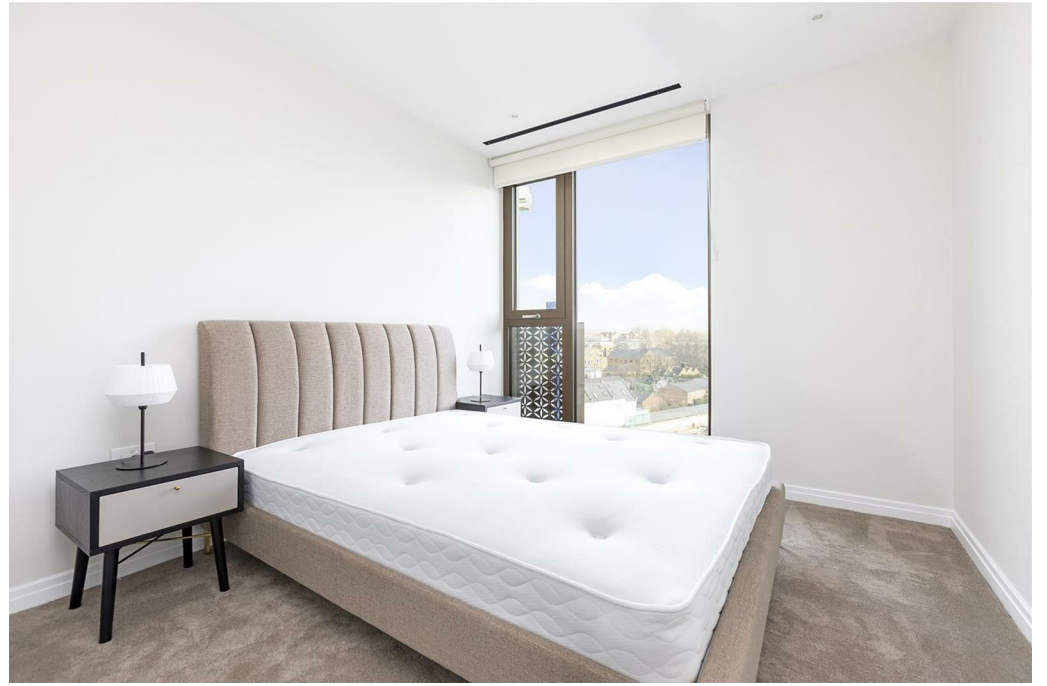
885.00 sq ft | 1 RECEPTION ROOM | 2 BEDROOMS | EN SUITE SHOWER ROOM | 2 BATHROOMS | KITCHEN



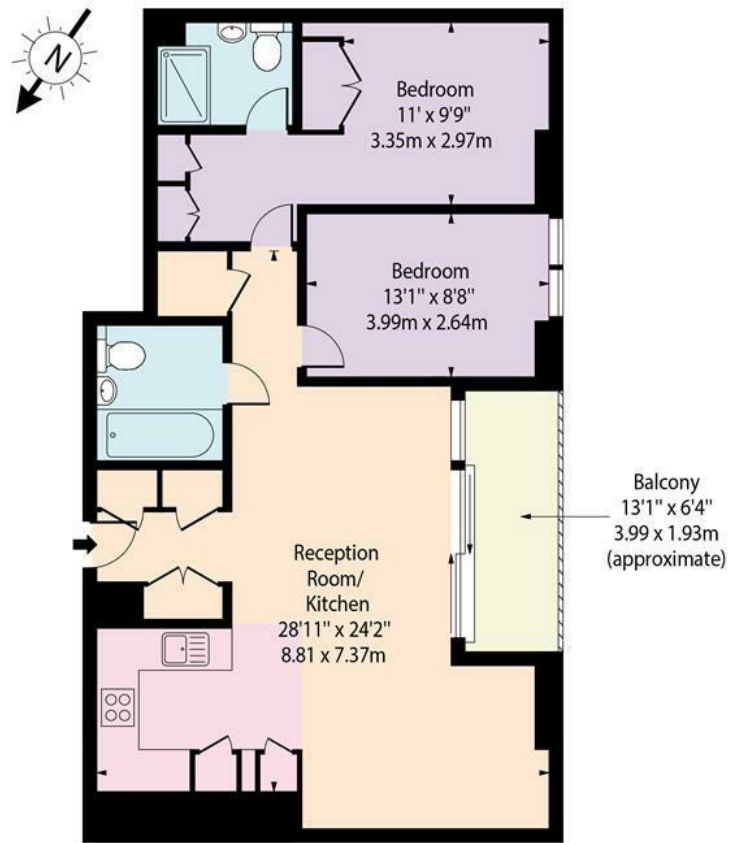
Guide Price £1,600,000

020 7937 9070
www.croft-international.com

Leasehold



Saxon House,
Kings Road Park,
Parkland Way, SW6



Sixth Floor

Approx Gross Internal Area 885 Sq Ft - 82.22 Sq M

For Illustration Purposes Only - Not To Scale Floor Plan by www.epixandplans.com Ref: No.0059

This floor plan should be used as a general outline for guidance only. Any intending purchaser or lessee should satisfy themselves by inspection, searches, enquiries and full survey as to the correctness of each statement. Any areas, measurements or distances quoted are approximate and should not be used to value a property or be the basis of any sale or let.

