

Pont Street, SW1X



A Beautiful 1,287 Sq ft flat, situated on the first floor of an elegant red brick period building in the heart of Knightsbridge moments from all the shops and amenities of Sloane Street and Brompton Road with an Elegant bright reception room with high ceilings and modern kitchen master bedroom with en-suite shower room second bedroom, second en-suite shower room, guest cloakroom, the flat further benefits from a lovely balcony from the reception room. Council Tax Kensington & Chelsea Band H. Deposit required equivalent to 6 weeks rent
(Please note some furniture on the photos may vary)

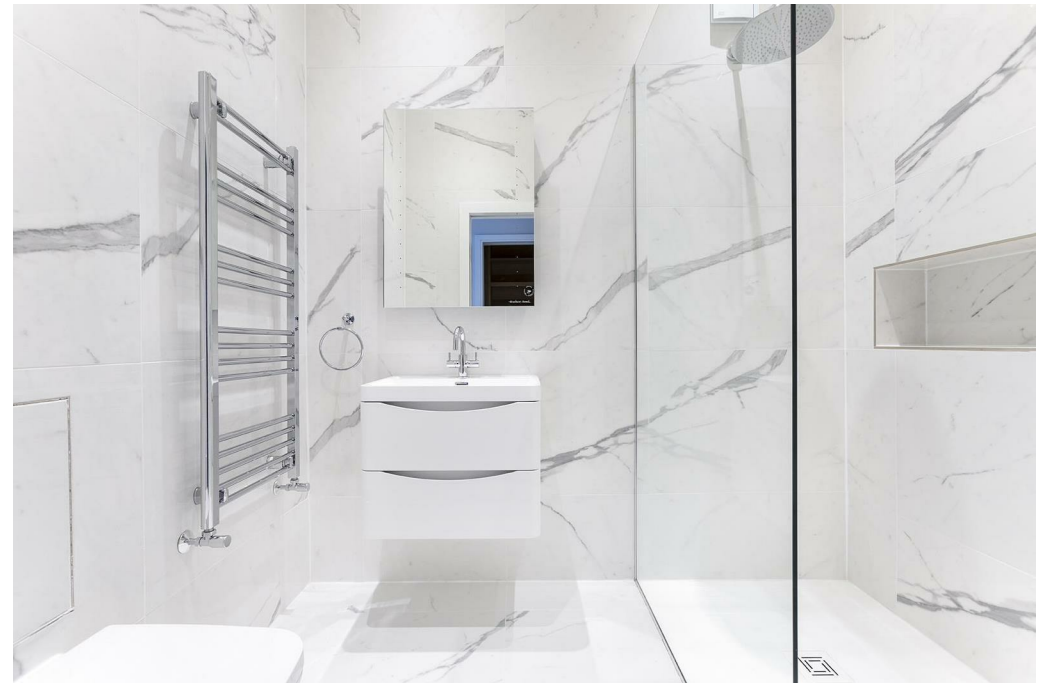
1287.00 sq ft | 1 RECEPTION ROOM | 2 BEDROOMS | 2 EN SUITE SHOWER ROOMS | GUEST CLOAKROOM | KITCHEN



£2,300 Per Week

020 7937 9070
www.croftinternational.co.uk

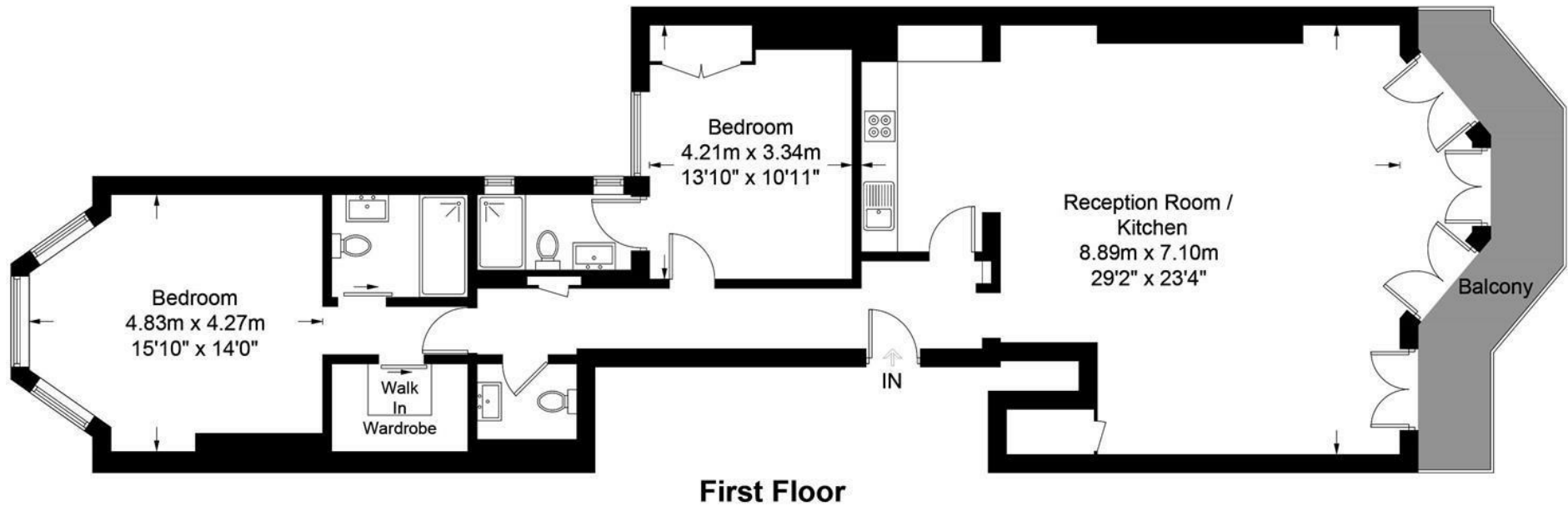
Furnished



Pont Street, SW1X



Approximate Gross Internal Area = 1287 sq ft / 119.6 sq m



This plan is for layout guidance only. Not drawn to scale unless stated. Windows and door openings are approximate. Whilst every care is taken in the preparation of this plan, please check all dimensions, shapes and compass bearings before making any decisions reliant upon them. (ID692086)

