

The Tower St Georges Wharf SW8



A luxury 2 bedroom flat with uninterrupted views of the River Thames. Located in the reputable development, The Tower @ St George Wharf, this lateral property benefits from 2 double bedrooms with fitted wardrobes, 2 bathrooms, a large reception room, and open plan kitchen. The Tower boasts state of the art amenities including 24/7 concierge, business lounge, gym, spa, swimming pool, cinema, residents lounge, dining lounge, meeting lounge and valet parking. Council Tax Lambeth Band H

1140.98 sq ft | 1 RECEPTION ROOM | 2 BEDROOMS | EN SUITE SHOWER ROOM | BATHROOM | KITCHEN | PARKING | RESIDENT FACILITIES



Guide Price £2,100,000

020 7937 9070
www.croft-international.com

Leasehold



The Tower,
St. Georges Wharf, SW8 2DU
Approximate Gross Internal Area
1145 sq ft / 106.39 sq m

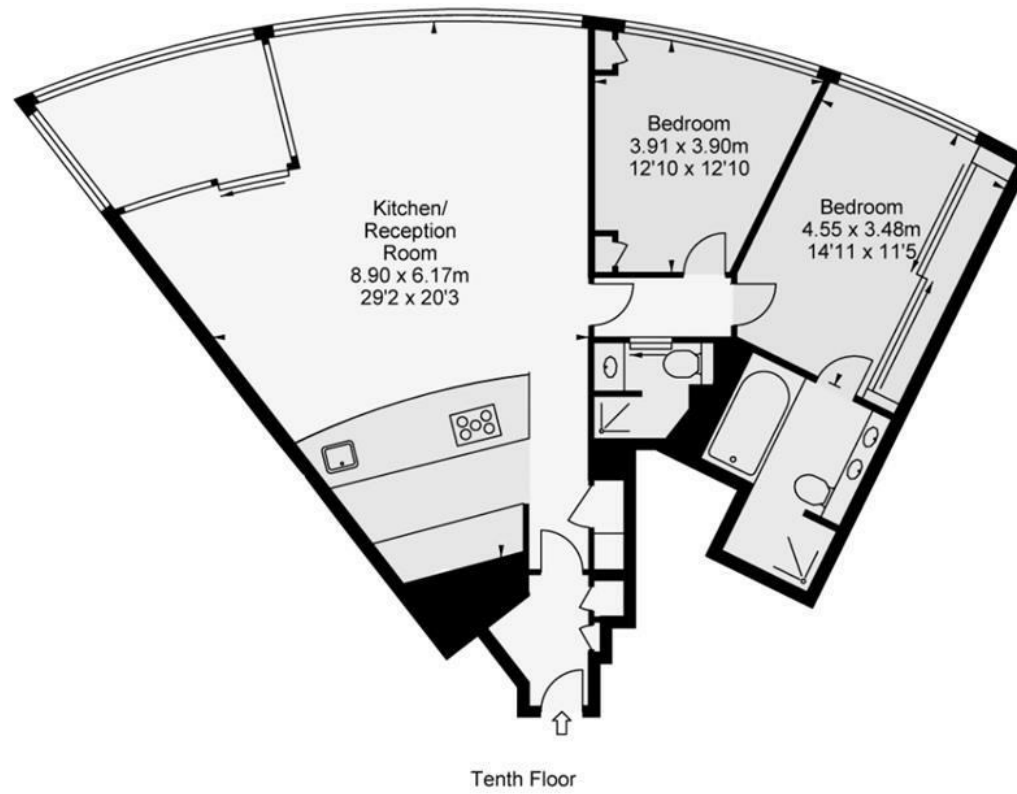


ILLUSTRATION FOR IDENTIFICATION PURPOSES ONLY

