

Damac Tower, SW8



Stunning 3 bedroom 1433 sq ft apartment located on the 43rd floor with iconic interiors designed by Versace Home, in the first collaboration between this luxury designer and a new residential development. The fully fitted integrated kitchen is complete with Miele appliances. Residents have an access to the first-class facilities located on 23rd & 24th floors and include: 8,010 sqft communal gardens, an indoor swimming pool and Jacuzzi, state-of-the-art gym and a children's play area. There is also a 24hr concierge service and an option for valet parking .

DAMAC Tower is perfectly positioned within Nine Elms and is the newest addition to London's skyline, opening out to breathtaking vistas from every aspect. The views cover the iconic Battersea Power Station, up the river Thames to the city and beyond.

1433.00 sq ft | RECEPTION ROOM | 3 BEDROOMS | 3 BATHROOMS | WINTER GARDEN | KITCHEN | FACILITIES | PARKING

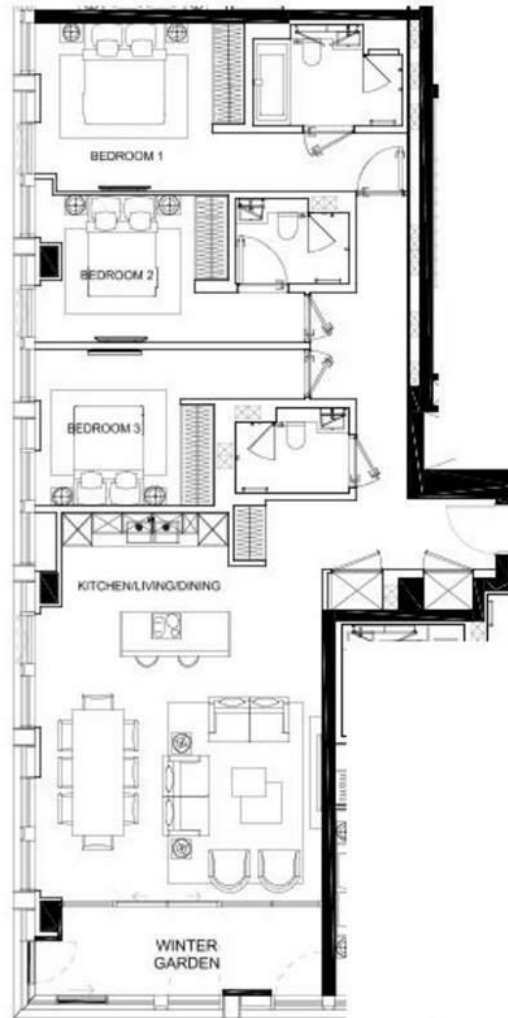


Guide Price £2,240,000

020 7937 9070
www.croft-international.com

Leasehold





KEY PLAN
Date: May 2022

UNIT	05	3B-E.4
Kitchen/Living/Dining		18' 7" x 25' 2"
Bedroom 1		11' 6" / 24' 2" x 11'
Bedroom 2		10' 4" / 17' 6" x 9' 9"
Bedroom 3		9' 5" / 17' 6" x 10' 3"
Apartment Area		1325.27 sq'
Winter Garden		104.41 sq'
Total Area		1432.68 sq'

AYK/43/4305

