

# Hans Place, SW1



An opulent 2 bedroom duplex apartment that redefines the concept of luxury living. This unique property has been refurbished to exacting standards combining modern technology with exquisite design. This stunning apartment benefits from a stately 20' square reception room with high ceilings and is set in a red brick period conversion in this sought after residential garden square in the heart of Knightsbridge in the Hans Town conservation area, benefiting from access to communal gardens and a long lease. Hans Place is located to the south of the Brompton Road moments from Harrods and the cafes of Knightsbridge, the exclusive boutiques on Sloane Street and the green spaces of Hyde Park.

973 SQ FT/ 90.4 SQ m | RECEPTION ROOM | 2 BEDROOMS | 2 SHOWER ROOMS | KITCHEN



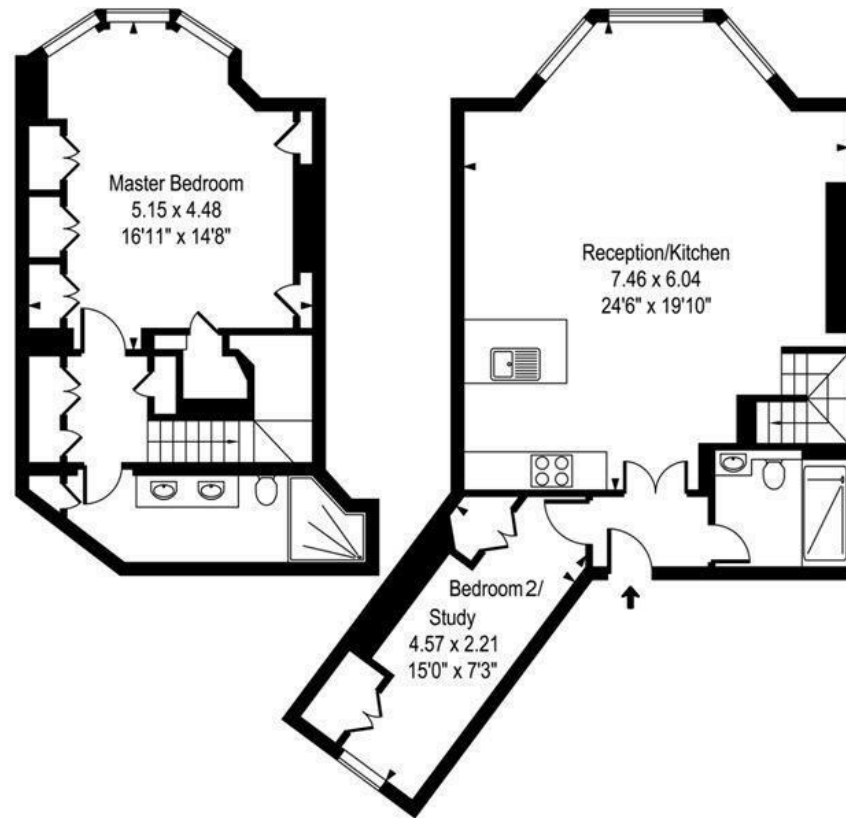
**Guide Price £1,975,000**

020 7937 9070  
[www.croftinternational.co.uk](http://www.croftinternational.co.uk)

**Leasehold**



# Hans Place SW1



Lower Ground Floor

Ground Floor

**Approx Gross Internal Area 973 Sq Ft -90.40 Sq M**

Whilst every attempt has been made to ensure the accuracy of the floor plan contained here, measurements of the doors, windows, rooms and any other items are approximate and no responsibility is taken for any error, omission, or mis-statement. This plan is for illustrative purposes only should be used as such by any prospective purchaser. The services, systems and appliances shown have not been tested and no guarantee as to their operability or efficiency can be given.

