



Ebury Street SW1



A well presented one bedroom flat situated on the 2nd floor this small period apartment building ideally located on the corner of South Eaton Place moments from all shops and restaurants on Elizabeth Street and within easy reach of Victoria Station and Sloane Square.

City of Westminster Council Tax Band E - EPC Rating C

Virtual Tour link: <https://new.express.adobe.com/webpage/KalsVkv1SidcM>

572.00 sq ft | 1 RECEPTION ROOM | 1 BEDROOM | SHOWER ROOM | KITCHEN | LIFT | CARETAKER



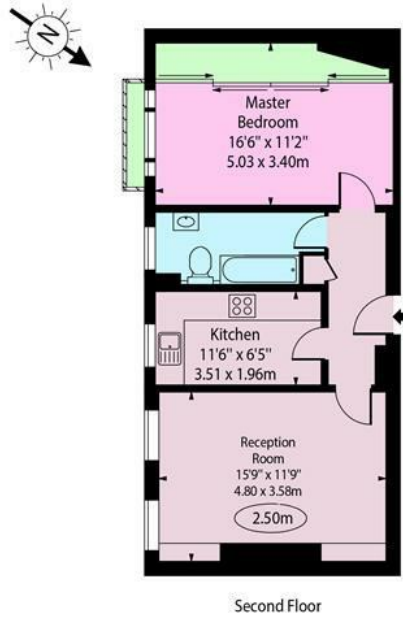
Guide Price £845,000 STC

020 7937 9070
www.croft-international.com

Leasehold



Ebury Street, SW1W



Second Floor

Approx Gross Internal Area 572 Sq Ft - 53.14 Sq M

For Illustration Purposes Only - Not To Scale Floor Plan by www.epixandplans.com Ref: No.0021

This floor plan should be used as a general outline for guidance only. Any intending purchaser or lessee should satisfy themselves by inspection, searches, enquiries and full survey as to the correctness of each statement. Any areas, measurements or distances quoted are approximate and should not be used to value a property or be the basis of any sale or let.

