

Carrara Tower, Bollinder Place, EC1V



Rental investment opportunity. Carrara Tower is ideally located in the heart of the city with easy access to transport links from Old Street, Angel and Kings Cross within walking distance.

Immaculately presented two bedroom apartment on the 18th Floor benefitting from 24 Hour Concierge, Fitness Centre, pool, Spa And Wellness Facilities, Residents' Lounge and Communal Rooftop Terrace

889.00 sq ft | RECEPTION ROOM | TWO BEDROOMS | BATHROOM | OPEN PLAN KITCHEN | 24 HOUR CONCIERGE | FITNESS CENTER | POOL & SPA | COMMUNAL ROOFTOP TERRACE



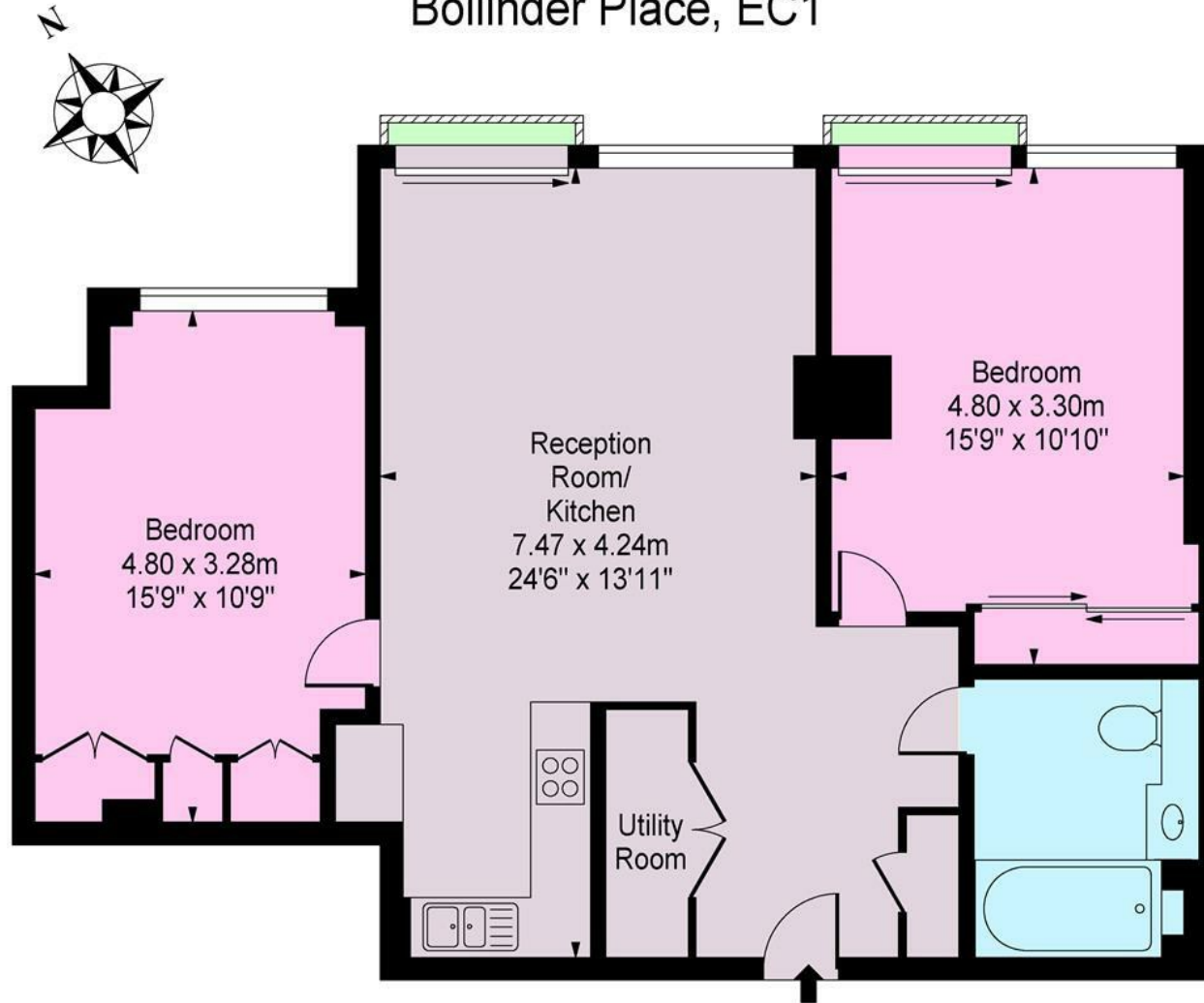
Guide Price £995,000

020 7937 9070
www.croftinternational.co.uk

Leasehold



Bollinder Place, EC1



Eighteenth Floor

Approx Gross Internal Area 889 Sq Ft - 82.59 Sq M

This floor plan should be used as a general outline for guidance only and does not constitute in whole or in part an offer or contract. Any intending purchaser or lessee should satisfy themselves by inspection, searches, enquiries and full survey as to the correctness of each statement. Any areas, measurements or distances quoted are approximate and should not be used to value a property or be the basis of any sale or let.

