

Carrara Tower, Bollinder Place, EC1V



Rental investment opportunity. Carrara Tower is ideally located in the heart of the city with easy access to transport links from Old Street, Angel and Kings Cross within walking distance.

Immaculately presented one bedroom apartment on the 10th Floor benefitting from 24 Hour Concierge, Fitness Centre, pool, Spa And Wellness Facilities, Residents' Lounge and Communal Rooftop Terrace

703.00 sq ft | 1 RECEPTION ROOM | 1 BEDROOM | BATHROOM | OPEN PLAN KITCHEN | 24 HOUR CONCIERGE | FITNESS CENTRE | POOL & SPA | COMMUNAL ROOFTOP TERRACE



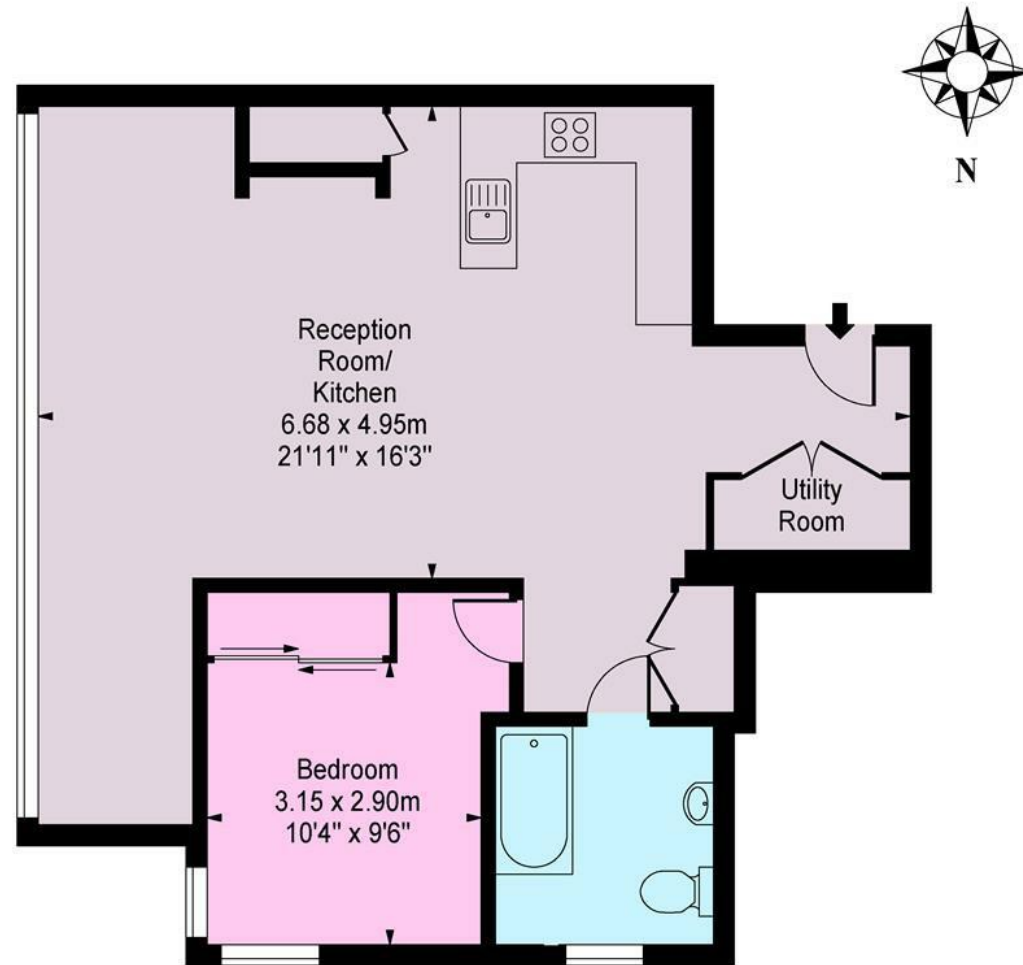
Guide Price £995,000

020 7937 9070
www.croft-international.com

Leasehold



Bollinder Place, EC1



Tenth Floor

Approx Gross Internal Area 703 Sq Ft - 65.3 Sq M

This floor plan should be used as a general outline for guidance only and does not constitute in whole or in part an offer or contract. Any intending purchaser or lessee should satisfy themselves by inspection, searches, enquiries and full survey as to the correctness of each statement. Any areas, measurements or distances quoted are approximate and should not be used to value a property or be the basis of any sale or let.

