

# Pearson Square, W1T



Located in the heart of the West End, this exceptional two-bedroom plus study apartment offers the perfect blend of luxury, comfort, and convenience. Positioned on the 6th floor of one of the area's most sought-after developments, residents enjoy breathtaking panoramic views from their private balcony and a lifestyle of unparalleled sophistication.

Just moments from the boutiques, fine dining, and vibrant cafés of Marylebone High Street, and with Oxford Circus transport links a short stroll away, this is truly London living at its finest.

Key Features:

Spacious two-bedroom apartment with additional study

1070.00 sq ft | 1 RECEPTION ROOM | 2 BEDROOMS | STUDY | 2 BATHROOMS | KITCHEN | 24 HOUR SECURITY | GYM



Guide Price £2,195,000

020 7937 9070  
[www.croft-international.com](http://www.croft-international.com)

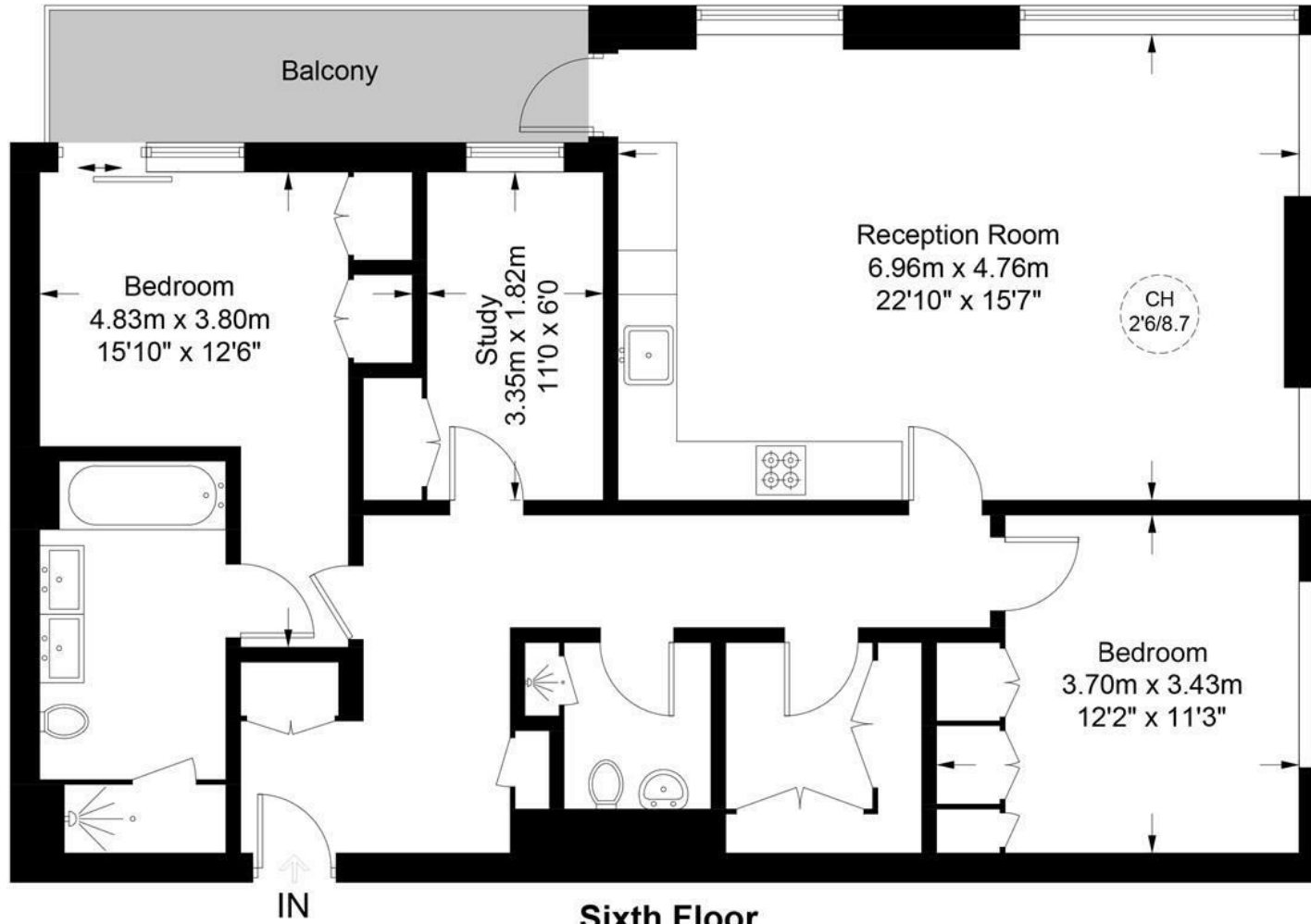
Leasehold





# Pearson Square, W1T

Approximate Gross Internal Area = 1070 sq ft / 99.4 sq m



**Sixth Floor**

This plan is for layout guidance only. Not drawn to scale unless stated. Windows and door openings are approximate. Whilst every care is taken in the preparation of this plan, please check all dimensions, shapes and compass bearings before making any decisions reliant upon them. (ID798446)



