



## 26 Haresfield Close

, Redditch, B97 4PP

**£775 Per Month**



A well appointed ground floor apartment located close to the Redditch Town Centre. The property comprises of an entrance hallway, spacious living room with patio doors leading to private courtyard, kitchen with built in oven and hob, double bedroom with built in overhead storage, bathroom with shower over bath. The property also offers gas central heating and parking.

A Holding Deposit of £178.00 will be taken at the point of application acceptance and will be deducted from the first months rent due on tenancy commencement date. Lamberts is a member of Propertymark which is a client money protection scheme, and also a member of The Property Ombudsman which is a redress scheme.

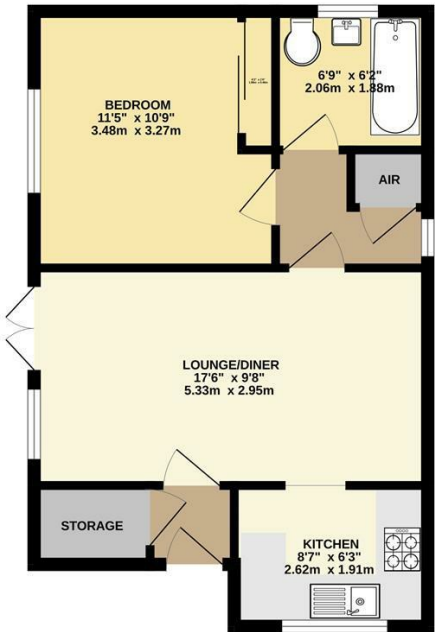
All tenancies start with an initial 6 month fixed term, unless agreed by negotiation.  
COUNCIL TAX BAND: Band A (Correct at the time of marketing commencement).







GROUND FLOOR  
454 sq.ft. (42.2 sq.m.) approx.



TOTAL FLOOR AREA - 454 sq.ft. (42.2 sq.m.) approx.  
The plan is not drawn to scale and is for illustrative purposes only.  
Made with Mapbox ©2025

Energy Efficiency Rating			Environmental Impact (CO <sub>2</sub> ) Rating		
	Current	Potential		Current	Potential
Very energy efficient - lower running costs			Very environmentally friendly - lower CO <sub>2</sub> emissions		
(92 plus) A			(92 plus) A		
(81-91) B			(81-91) B		
(69-80) C			(69-80) C		
(55-68) D			(55-68) D		
(39-54) E			(39-54) E		
(21-38) F			(21-38) F		
(1-20) G			(1-20) G		
Not energy efficient - higher running costs			Not environmentally friendly - higher CO <sub>2</sub> emissions		
England & Wales			England & Wales		
EU Directive 2002/91/EC			EU Directive 2002/91/EC		

These particulars, whilst believed to be accurate are set out as a general outline only for guidance and do not constitute any part of an offer or contract. Intending purchasers should not rely on them as statements of representation of fact, but must satisfy themselves by inspection or otherwise as to their accuracy. No person in this firms employment has the authority to make or give any representation or warranty in respect of the property.