



## 1A Priory Square

, Studley, B80 7AZ

**£725 Per Month**



A Grade II Listed Ground-Floor Apartment In The Heart of Studley Village.

This apartment benefitting from period features and includes an Entrance , Living Room benefitting from lots of natural light, a kitchen with breakfast bar, a double bedroom and a shower room.

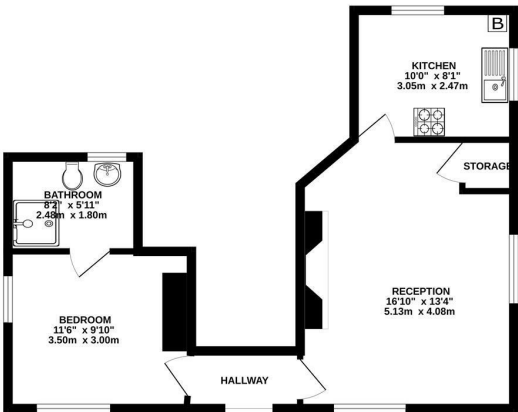
Council tax band - A.

EPC Rating - E (48).





GROUND FLOOR  
469 sq.ft. (43.5 sq.m.) approx.



TOTAL FLOOR AREA: 469 sq.ft. (43.5 sq.m.) approx.  
This plan is not drawn to scale and is for guidance purposes only.  
Made with Mapbox C2025

Energy Efficiency Rating			Environmental Impact (CO <sub>2</sub> ) Rating		
	Current	Potential		Current	Potential
Very energy efficient - lower running costs			Very environmentally friendly - lower CO <sub>2</sub> emissions		
(92 plus) A			(92 plus) A		
(81-91) B			(81-91) B		
(69-80) C			(69-80) C		
(55-68) D			(55-68) D		
(39-54) E			(39-54) E		
(21-38) F			(21-38) F		
(1-20) G			(1-20) G		
Not energy efficient - higher running costs			Not environmentally friendly - higher CO <sub>2</sub> emissions		
England & Wales	EU Directive 2002/91/EC		England & Wales	EU Directive 2002/91/EC	

These particulars, whilst believed to be accurate are set out as a general outline only for guidance and do not constitute any part of an offer or contract. Intending purchasers should not rely on them as statements of representation of fact, but must satisfy themselves by inspection or otherwise as to their accuracy. No person in this firms employment has the authority to make or give any representation or warranty in respect of the property.