



## 5 Chestnut Lane

Inkberrow, Worcestershire, WR7 4ES

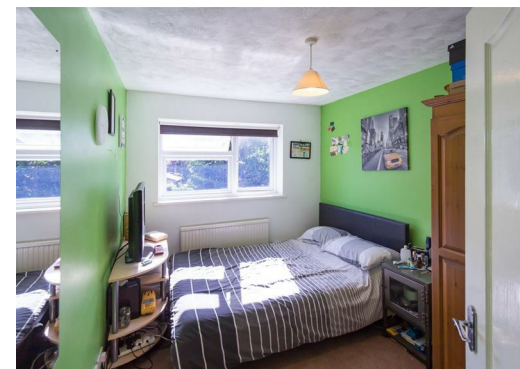
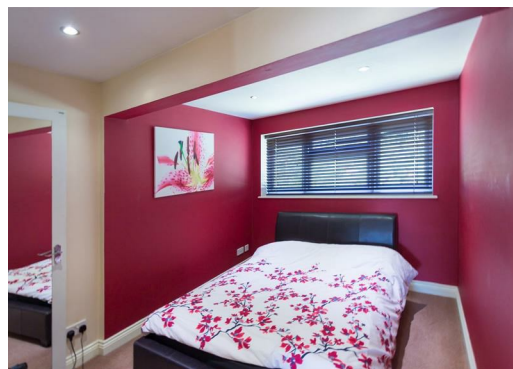
**£1,650 PCM**

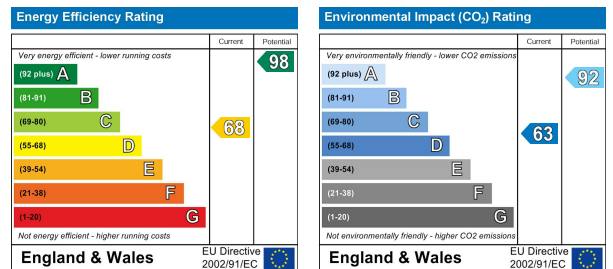


This is a spacious, detached family home within the desirable village location of Inkberrow. This home has the benefit of driveway parking for several cars and a single garage. There are 4 double bedrooms within the property, the master having an en-suite shower room. The property benefits from having a large lounge, separate dining room, kitchen, utility and a useful office space. The conservatory at the rear of the property opens to an enclosed garden laid to lawn with a patio area.

The property is situated in the heart of the village and is in walking distance to the Post Office, village shop and Doctors surgeries.

EPCD





These particulars, whilst believed to be accurate are set out as a general outline only for guidance and do not constitute any part of an offer or contract. Intending purchasers should not rely on them as statements of representation of fact, but must satisfy themselves by inspection or otherwise as to their accuracy. No person in this firm's employment has the authority to make or give any representation or warranty in respect of the property.