



## Ashton House Business Centre Cheltenham Road

, Ashton-Under-Hill, WR11 7QP

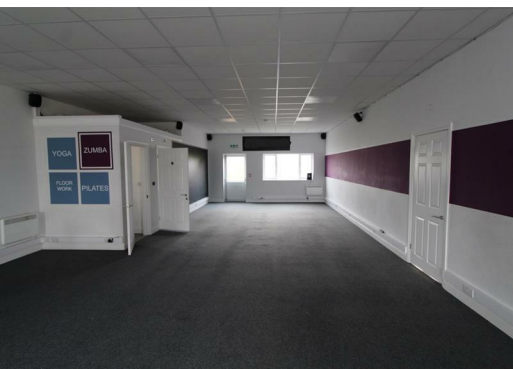
**£525**



\* Half Price Offer On Commercial Unit\*

'All enquiries are to be made to Doorbars Surveyors on 01905 27288'

1050sqft Commercial Unit with W/C and small kitchenette area. There is a fob alarm system and car parking available.





| Energy Efficiency Rating                    |  | Current                 | Potential | Environmental Impact (CO <sub>2</sub> ) Rating                  |  | Current                 | Potential |
|---|--|-------------------------|-----------|---|--|-------------------------|-----------|
| Very energy efficient - lower running costs |  |                         |           | Very environmentally friendly - lower CO <sub>2</sub> emissions |  |                         |           |
| (92 plus) A                                 |  |                         |           | (92 plus) A   |  |                         |           |
| (81-91) B                                   |  |                         |           | (81-91) B   |  |                         |           |
| (69-80) C                                   |  |                         |           | (69-80) C   |  |                         |           |
| (55-68) D                                   |  |                         |           | (55-68) D   |  |                         |           |
| (39-54) E                                   |  |                         | 50        | (39-54) E   |  |                         |           |
| (21-38) F                                   |  |                         |           | (21-38) F   |  |                         |           |
| (1-20) G                                    |  |                         |           | (1-20) G  |  |                         |           |
| Not energy efficient - higher running costs |  |                         |           | Not environmentally friendly - higher CO <sub>2</sub> emissions |  |                         |           |
| <b>England &amp; Wales</b>                  |  | EU Directive 2002/91/EC |           | <b>England &amp; Wales</b>                                      |  | EU Directive 2002/91/EC |           |

These particulars, whilst believed to be accurate are set out as a general outline only for guidance and do not constitute any part of an offer or contract. Intending purchasers should not rely on them as statements of representation of fact, but must satisfy themselves by inspection or otherwise as to their accuracy. No person in this firm's employment has the authority to make or give any representation or warranty in respect of the property.