



Room 6 Liberal House

Bell Lane, Studley, B80 7LR

£735 PCM



Single Room Including Utilities Available To Let

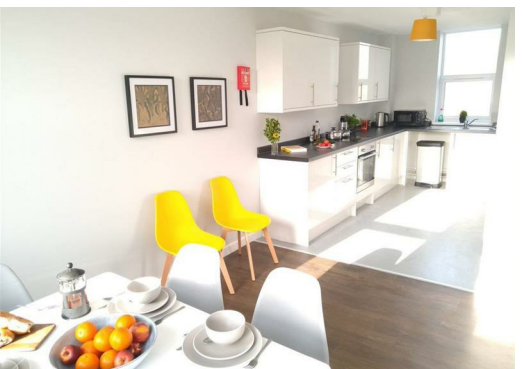
Conveniently located in Studley, Warwickshire, Liberal House comprises of 4 Top Floor Executive Rooms, all fully inclusive of utilities, broadband and cleaning services, fitted to a modern contemporary finish.

Liberal House is about as efficient as you can get and is available in short- and long-term leases. Residents benefit from a cleaning service, fully inclusive of all broadband, water and heating costs.

All rooms have a double bed complete with 100% cotton bedding, desk, chair, wardrobe and modern en-suite facilities.

There is a shared dining kitchen complete, oven, hob, fridge freezer and plenty of cupboard space. There is a separate utility area with sink, washing machine and tumble dryer.

Liberal house is aimed at those looking for cost effective, safe and secure living. With a super fast broadband connection Liberal House offers the perfect base for homeworking.





Energy Efficiency Rating		Current	Potential	Environmental Impact (CO ₂) Rating		Current	Potential
Very energy efficient - lower running costs				Very environmentally friendly - lower CO ₂ emissions			
(92 plus) A				(92 plus) A			
(81-91) B				(81-91) B			
(69-80) C				(69-80) C			
(55-68) D				(55-68) D			
(39-54) E				(39-54) E			
(21-38) F				(21-38) F			
(1-20) G				(1-20) G			
Not energy efficient - higher running costs				Not environmentally friendly - higher CO ₂ emissions			
England & Wales		EU Directive 2002/91/EC		England & Wales		EU Directive 2002/91/EC	

These particulars, whilst believed to be accurate are set out as a general outline only for guidance and do not constitute any part of an offer or contract. Intending purchasers should not rely on them as statements of representation of fact, but must satisfy themselves by inspection or otherwise as to their accuracy. No person in this firm's employment has the authority to make or give any representation or warranty in respect of the property.