



# Flat 15 Ryland House

Hewell Road, Redditch, B97 6AE

**£750 PCM**



\*This property is offered on a Shared Basis where the Landlord's Family Member has access to One Bedroom\*

This is a conveniently located duplex apartment located within the heart of Redditch walking distance from shops and amenities. The property is close to the train and bus station making it an excellent location for commuting.

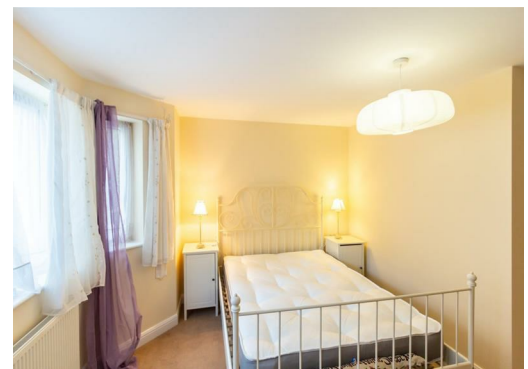
There are 2 access points on the ground and first floor levels and the property comes with undercover parking.

The accommodation comprises of a good sized bedroom, private bathroom, shared lounge/ dining area with patio door to garden area, shared kitchen fully fitted with fitted appliances plus breakfast bar area. The property is fully furnished and Wi-Fi is included.

The property is available now for viewings.

EPC Band C

Council Tax Band C





Energy Efficiency Rating		Current	Potential	Environmental Impact (CO <sub>2</sub> ) Rating		Current	Potential
Very energy efficient - lower running costs				Very environmentally friendly - lower CO <sub>2</sub> emissions			
(92 plus) A				(92 plus) A			
(81-91) B				(81-91) B			
(69-80) C				(69-80) C			
(55-68) D				(55-68) D			
(39-54) E				(39-54) E			
(21-38) F				(21-38) F			
(1-20) G				(1-20) G			
Not energy efficient - higher running costs				Not environmentally friendly - higher CO <sub>2</sub> emissions			
<b>England &amp; Wales</b>		EU Directive 2002/91/EC		<b>England &amp; Wales</b>		EU Directive 2002/91/EC	

These particulars, whilst believed to be accurate are set out as a general outline only for guidance and do not constitute any part of an offer or contract. Intending purchasers should not rely on them as statements of representation of fact, but must satisfy themselves by inspection or otherwise as to their accuracy. No person in this firm's employment has the authority to make or give any representation or warranty in respect of the property.