



phillip shaw  
estate agents

150 Kingshill Drive, Harrow

Guide Price £640,000



phillip shaw  
estate agents





## 150 Kingshill Drive

Harrow, Harrow

Charming 3-bed semi-detached house with extended kitchen, through lounge, office, large garden & parking. Close to shops, schools & public transport links. Potential for loft conversion STPP.

Council Tax band: E

Tenure: Freehold

EPC Energy Efficiency Rating: D

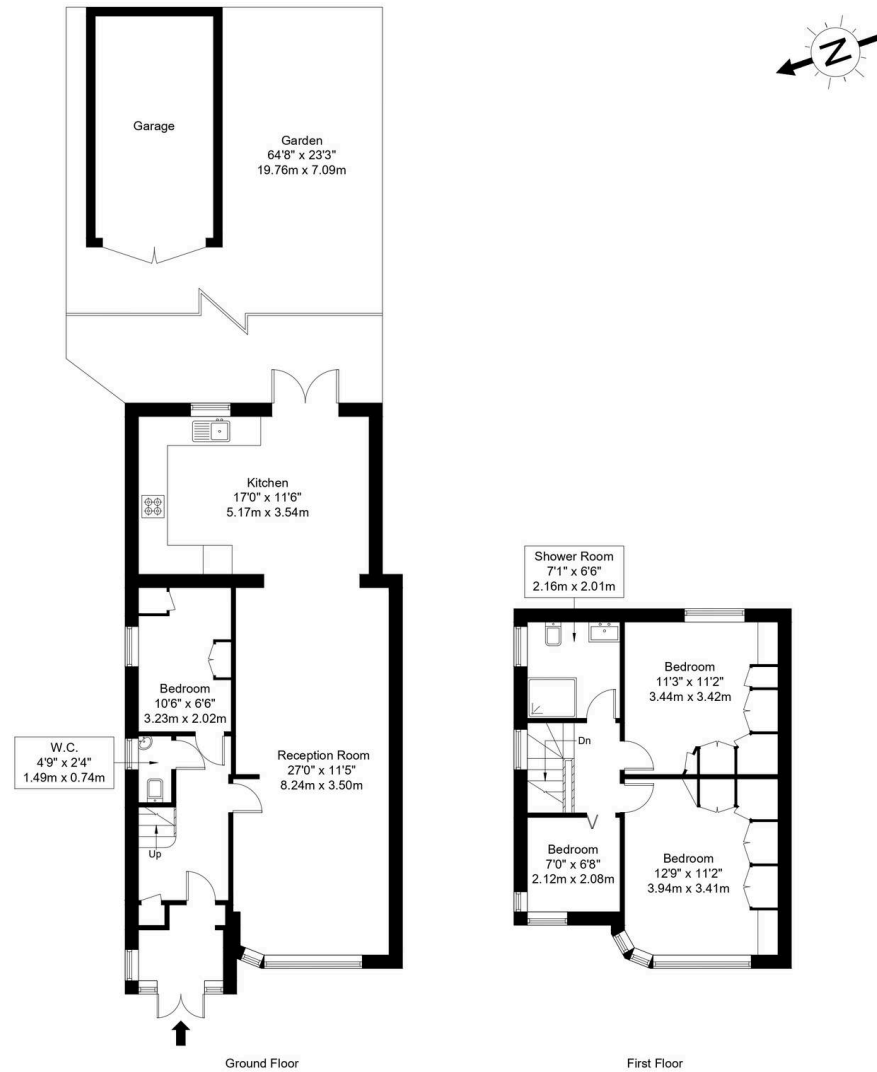
EPC Environmental Impact Rating: D

- Three Bedroom Semi Detached House



# Kingshill Drive, HA3 8QS

Approx Gross Internal Area = 106.86 sq m / 1150 sq ft



Ref :

Copyright **BLEU  
PLAN**

The Floor plan is not to scale and measurements and areas shown are approximate and therefore should be used for illustrative purposes only. The plan has been prepared in accordance with the RICS code of Measuring Practice and whilst we have confidence in the information produced it must not be relied on. Maximum lengths and widths are represented on the floor plan. If there is any aspect of particular importance, you should carry out or commission your own inspection of the property.

Copyright @ BLEUPLAN