



27 Kingsmere Park, London

Guide Price £1,050,000




phillip shaw
estate agents



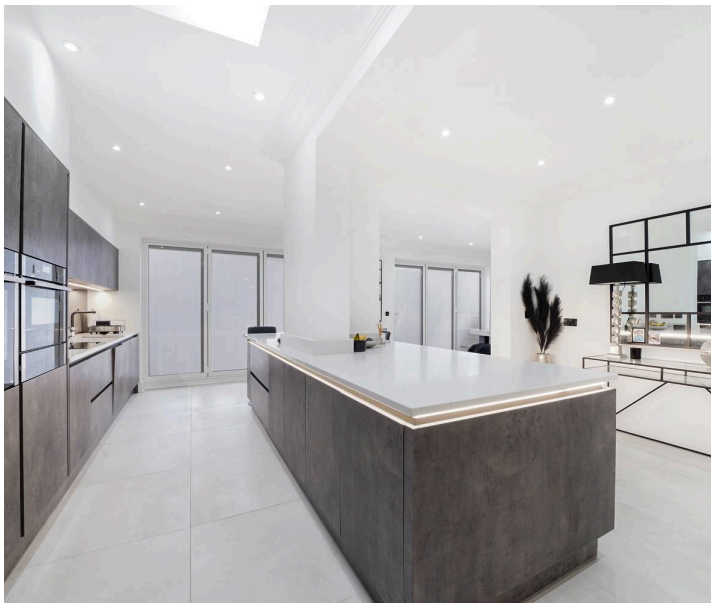
27 Kingsmere Park

London, London

Beautifully maintained 4-bed home on Kingsmere Avenue. Modern living, stylish kitchen, spacious lounge with garden access. Luxurious master suite. Tranquil garden, private driveway. Ideal for families. Close to schools, transport links. Schedule a viewing now!

Council Tax band: E

Tenure: Freehold



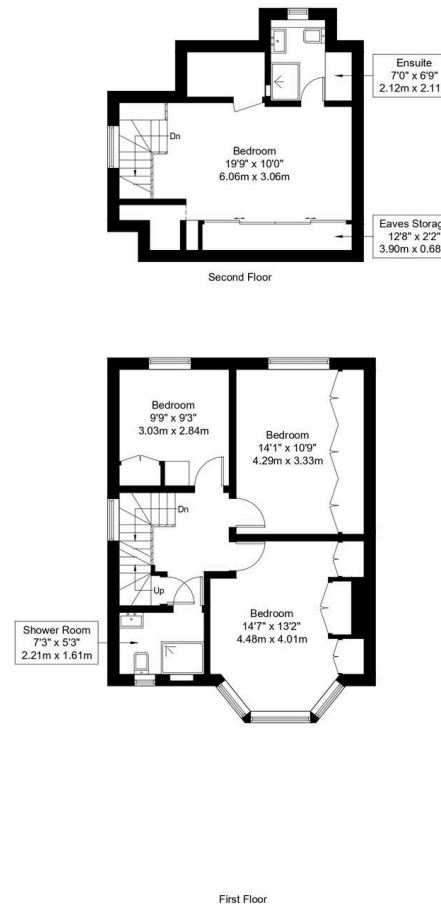
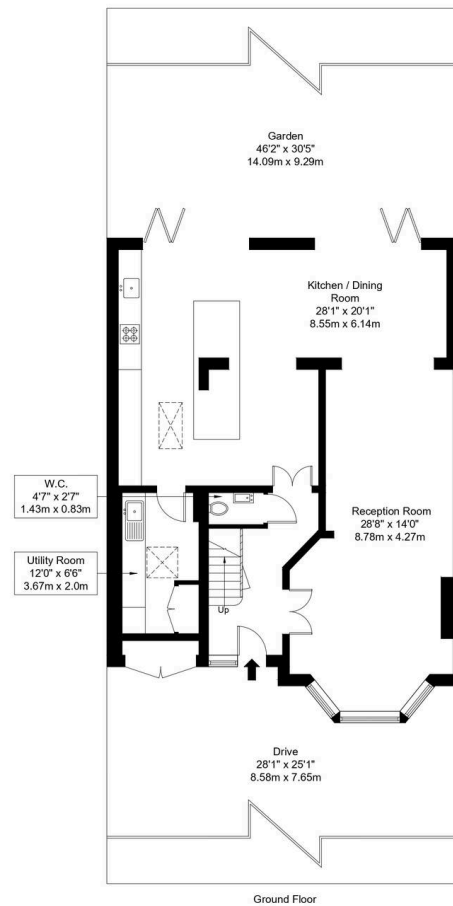
Kingsmere Park, NW9 8PJ

Approx Gross Internal Area = 173.79 sq m / 1871 sq ft

RHH / Eaves Storage = 5.07 sq m / 54 sq ft

Total = 178.86 sq m / 1925 sq ft

 = Reduced Headroom Below 1.5m / 5'0



Ref :

Copyright **BLEUPLAN**

The Floor plan is not to scale and measurements and areas shown are approximate and therefore should be used for illustrative purposes only. The plan has been prepared in accordance with the RICS code of Measuring Practice and whilst we have confidence in the information produced it must not be relied on. Maximum lengths and widths are represented on the floor plan. If there is any aspect of particular importance, you should carry out or commission your own inspection of the property.

Copyright @ BLEUPLAN