



phillip shaw  
estate agents

## 14 Lapstone Gardens, Harrow

Guide Price £825,000



phillip shaw  
estate agents



## 14 Lapstone Gardens

Harrow, Harrow

Charming 3-bed semi-detached house off the prestigious Northwick Circle needing modernisation. Potential for extensions. Spacious reception rooms, utility room, large garden, garage with driveway. Close to schools, stations, shops, eateries, and parks.

Council Tax band: F

Tenure: Freehold

EPC Energy Efficiency Rating: E

EPC Environmental Impact Rating: F

- Three Bed Semi Detached House For Sale

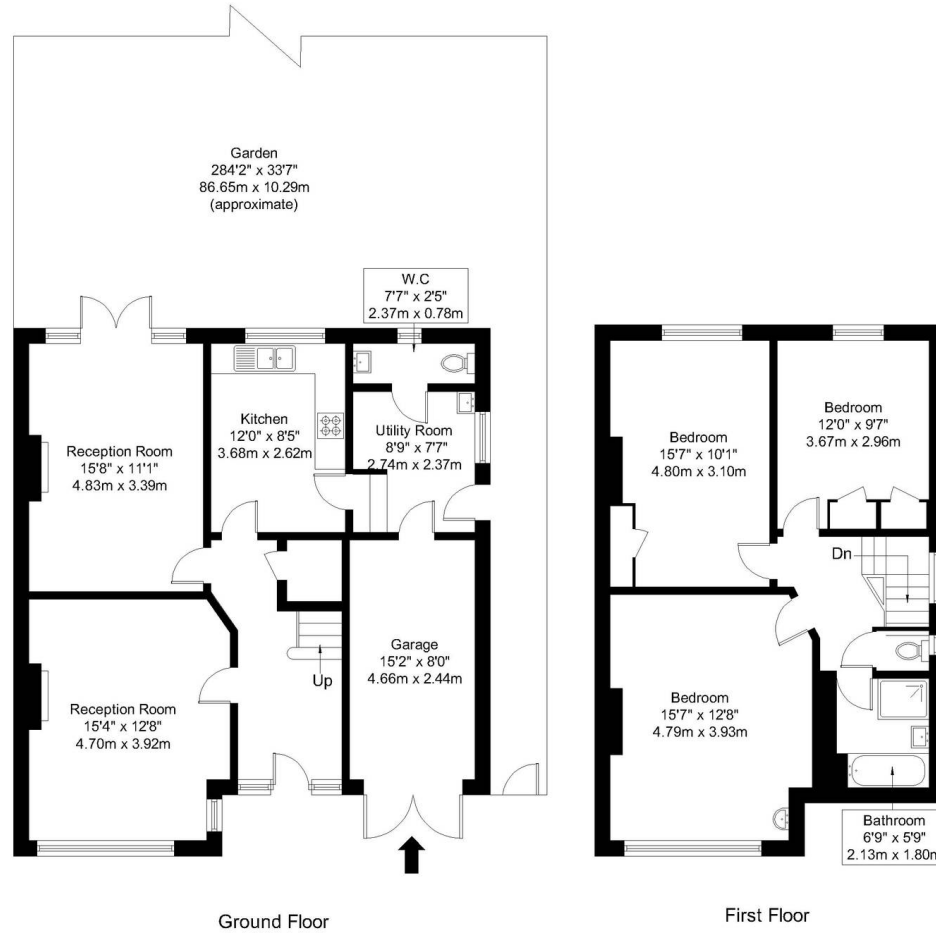
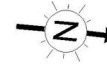


# Lapstone Gardens, HA3 0ED

Approx Gross Internal Area = 135.5 sq m / 1 459 sq ft

Garden = 910.4 sq m / 9 799 sq ft

Total = 1045.9 sq m / 11 257 sq ft



Ref:

Copyright **BLEU  
PLAN**

The Floor plan is not to scale and measurements and areas shown are approximate and therefore should be used for illustrative purposes only. The plan has been prepared in accordance with the RICS code of Measuring Practice and whilst we have confidence in the information produced it must not be relied on. Maximum lengths and widths are represented on the floor plan. If there is any aspect of particular importance, you should carry out or commission your own inspection of the property.

Copyright @ BLEUPLAN