



15 Ashcroft Court Winton Road, Petersfield

Guide Price £215,000

 **Henry Adams**
estate agents

15 Ashcroft Court Winton Road

Petersfield, Petersfield

Just a short stroll from Petersfield town centre and mainline railway station, this spacious top-floor apartment offers well-balanced accommodation making it an ideal purchase for first time buyers and investors alike.

There is a light and airy living room, a fitted kitchen, two well proportioned bedrooms, and a bathroom. Being located on the top floor, the apartment enjoys a pleasant outlook with views stretching over Butser Hill and a sense of privacy.

Externally, the property is well served with excellent amenities. Residents have the use of communal gardens and parking areas, while this apartment also comes with the added advantage of a private garage.

Ashcroft Court occupies a convenient position just minutes from Petersfield's thriving town centre, which provides a wide selection of shops, cafés, restaurants, and other everyday amenities. Petersfield station offers direct rail services to London Waterloo and Portsmouth, while the A3 provides easy access by road to Guildford and beyond. The property is also ideally placed for access to local schools and the surrounding South Downs National Park.

This apartment represents an excellent opportunity for a first-time buyer, downsizer, or investor alike.

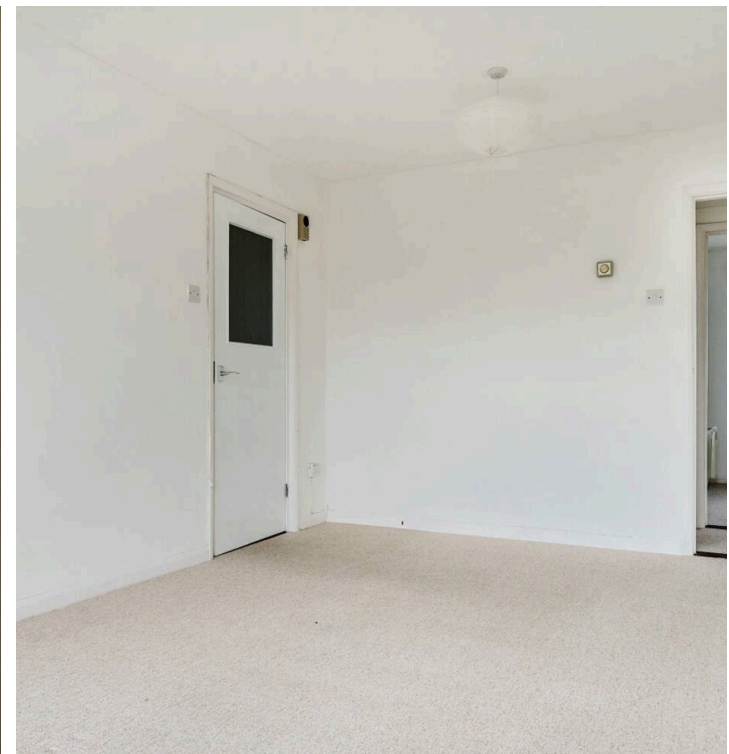
Council Tax band: C

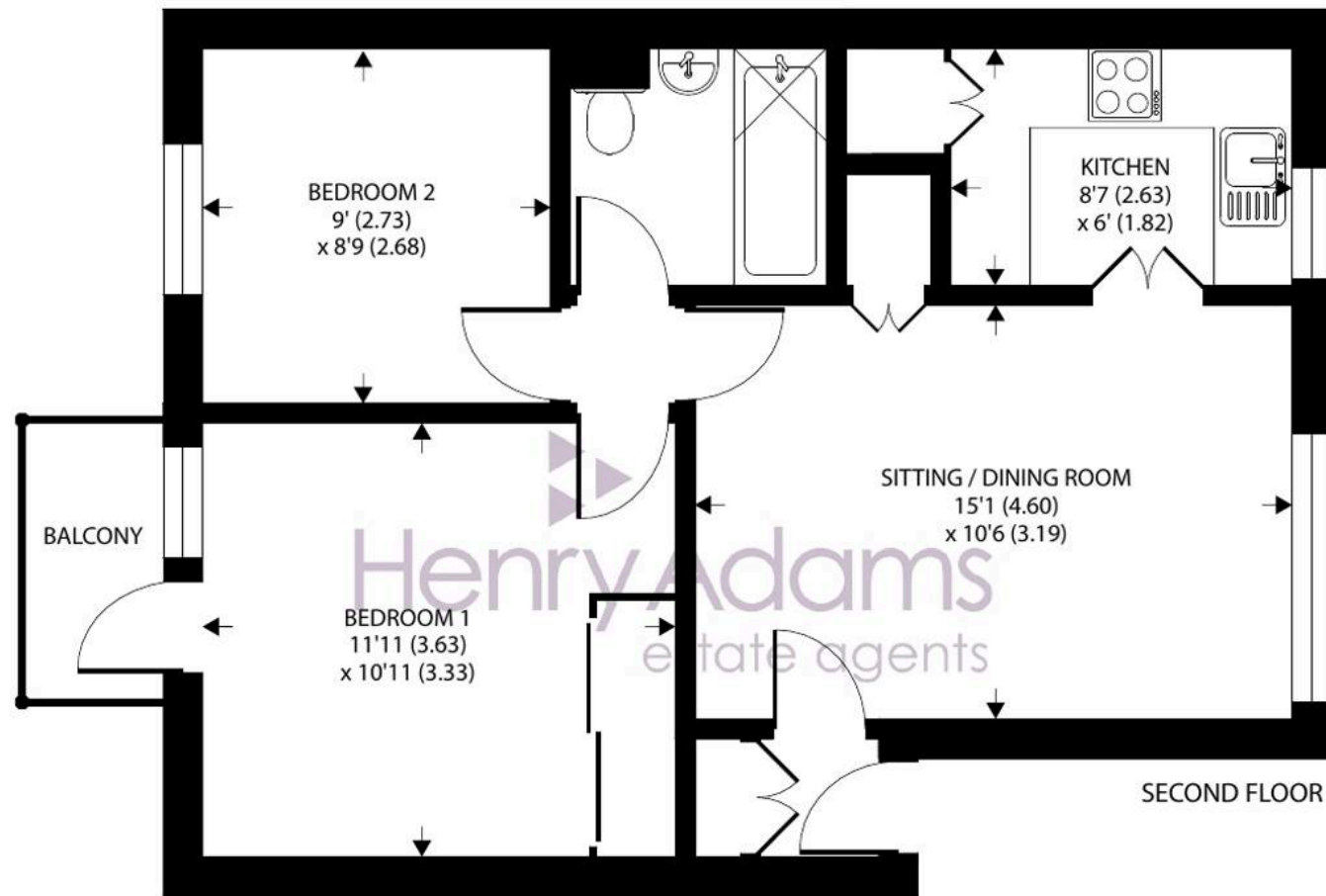
Tenure: Leasehold

EPC Energy Efficiency Rating: E

EPC Environmental Impact Rating: F

- Top Floor Two Bedroom Apartment





15 Ashcroft Court, Winton Road, Petersfield

Approximate Area = 530 sq ft / 49.2 sq m

For identification only - Not to scale



Floor plan produced in accordance with RICS Property Measurement 2nd Edition, Incorporating International Property Measurement Standards (IPMS2 Residential). © n1checom 2025. Produced for Henry Adams. REF: 1356149



Henry Adams - Petersfield

Henry Adams LLP, 24 Lavant Street - GU32 3EW

01730 262801

petersfield@henryadams.co.uk

www.henryadams.co.uk/

Agents Note - Our particulars are for guidance only and are intended to give a fair overall summary of the property. They do not form part of any contract or offer, and should not be relied upon as a statement or representation of fact. Measurements, areas and distances are approximate only. Photographs may include lifestyle shots and pictures of local views. No undertaking is given as to the structural condition of the property, or any necessary consents or the operating ability or efficiency of any service, system or appliance. Please ask if you would like further information, especially before you travel to the property.