



Flat 1, Byron Court, 7 Charles Street

Guide Price £185,000

Flat 1

Byron Court, Petersfield

This well-maintained property offers the convenience of off-road parking and is just a stone's throw away from the bustling town of Petersfield and Petersfield Train Station, making commuting a breeze. With one double bedroom and a generous living room, if you're a busy professional or enjoy town centre living, this flat offers the ideal blend of comfort and practicality in a sought-after central location.

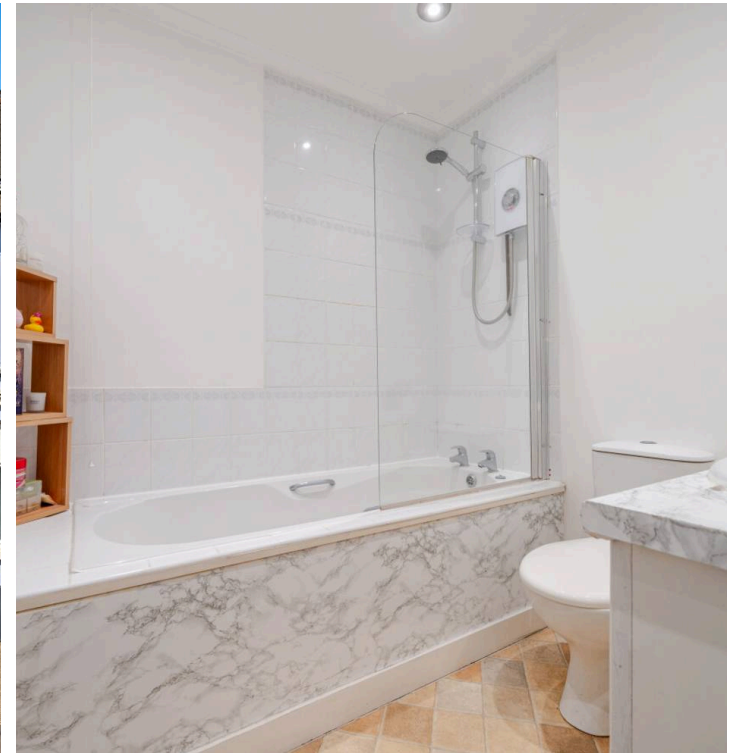
Council Tax band: B

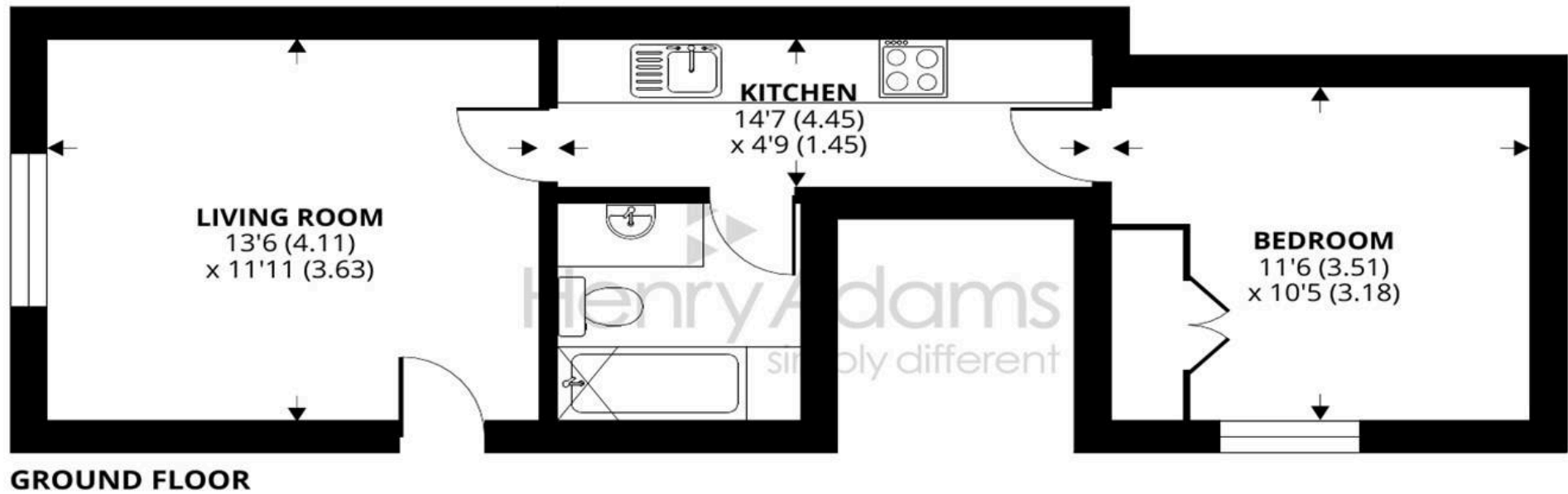
Tenure: Leasehold

EPC Energy Efficiency Rating: E

EPC Environmental Impact Rating: E

- One Double Bedroom
- Ground Floor Flat
- Off Road Parking
- Convenient Town Centre Location
- Close To Petersfield Train Station





1 Byron Court, 7 Charles Street, Petersfield

Approximate Area = 407 sq ft / 37.8 sq m

For identification only - Not to scale



Floor plan produced in accordance with RICS Property Measurement Standards incorporating International Property Measurement Standards (IPMS2 Residential). © nichecom 2022. Produced for Henry Adams. REF: 857517



Henry Adams - Petersfield

Henry Adams LLP, 24 Lavant Street - GU32 3EW

01730 262801

petersfield@henryadams.co.uk

www.henryadams.co.uk/

Agents Note - Our particulars are for guidance only and are intended to give a fair overall summary of the property. They do not form part of any contract or offer, and should not be relied upon as a statement or representation of fact. Measurements, areas and distances are approximate only. Photographs may include lifestyle shots and pictures of local views. No undertaking is given as to the structural condition of the property, or any necessary consents or the operating ability or efficiency of any service, system or appliance. Please ask if you would like further information, especially before you travel to the property.