



15 Oyster Mews French Street, Portsmouth

Guide Price £895,000 Freehold





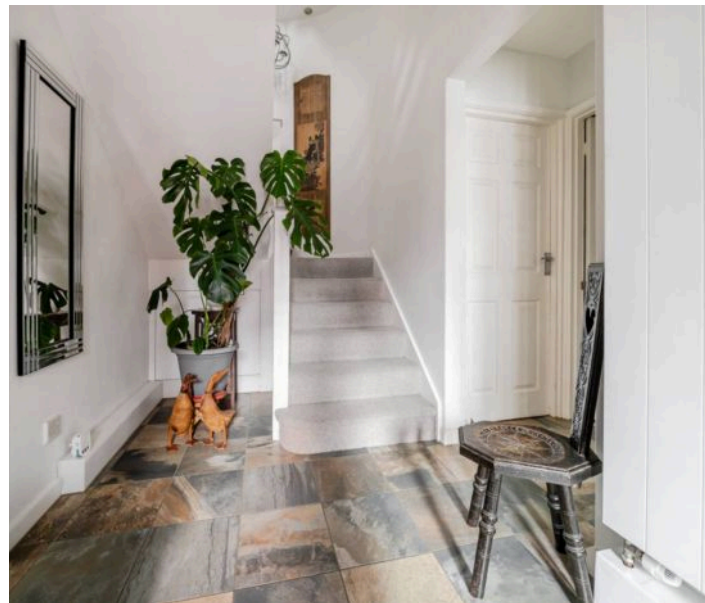
15 Oyster Mews French Street

Old Portsmouth

This stunning detached house is beautifully presented throughout, offering a perfect blend of style and functionality. Upon entering, you are welcomed by a stylish fitted kitchen complete with an island, ideal for entertaining guests or enjoying family meals. The light and spacious sitting room features a balcony, providing a peaceful retreat to unwind. The property boasts three double bedrooms with bedroom two currently being used as an additional reception room by the current owners, offering ample space for a growing family or guests. Additional amenities include a utility room, perfect for every-day tasks, and an office/optional fourth bedroom for added versatility. The modern family bathroom is sleek and well-appointed, while bedroom one boasts fitted wardrobes and an en-suite for added convenience. Bedroom three also features fitted wardrobes, adding to the ample storage options within the home.

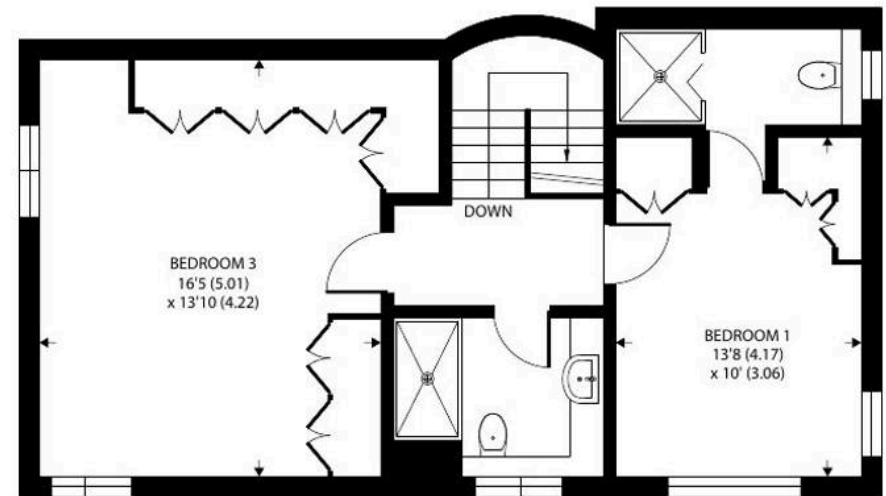
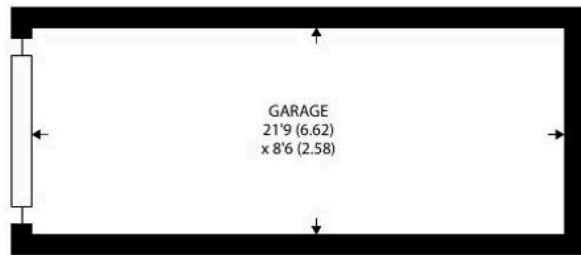
Situated in a highly sought-after central location, residents will enjoy easy access to must-see attractions such as Spinnaker Tower, Spice Island, and the Cathedral, making it an ideal spot for those looking to immerse themselves in the heart of the vibrant community.

- Beautifully Presented Detached House

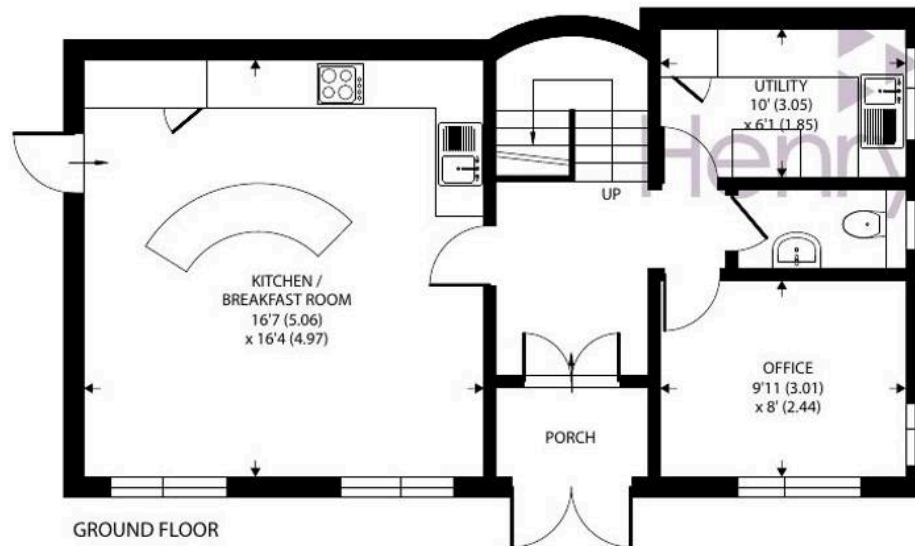




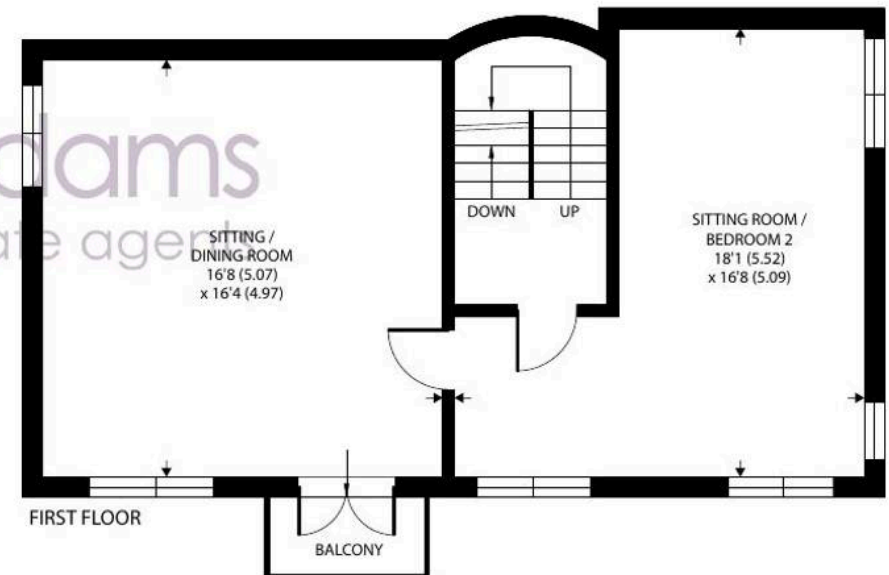




SECOND FLOOR



GROUND FLOOR



FIRST FLOOR

15 Oyster Mews, French Street, Portsmouth, PO1 2JS

Approximate Area = 1758 sq ft / 163.3 sq m

Garage = 184 sq ft / 17 sq m

Total = 1942 sq ft / 180.3 sq m

For identification only - Not to scale



Floor plan produced in accordance with RICS Property Measurement 2nd Edition,
Incorporating International Property Measurement Standards (IPMS2 Residential). © n̄checom 2025.
Produced for Henry Adams. REF: 1258038



Council Tax band: F

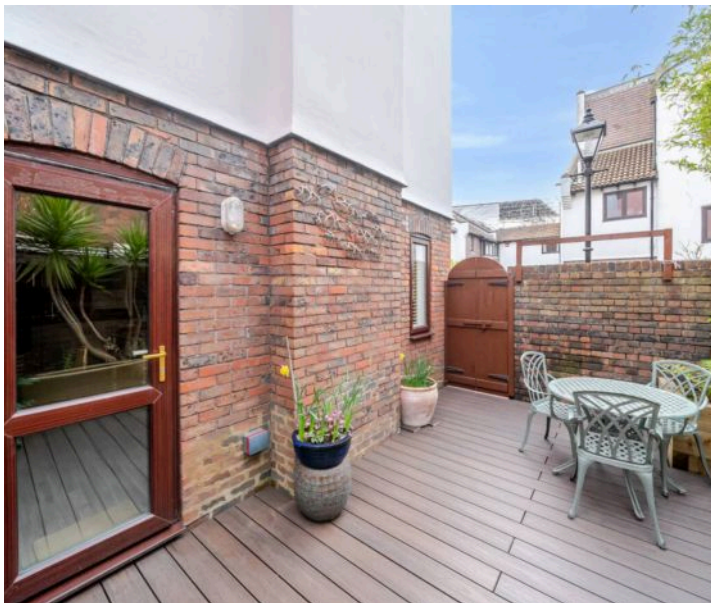
EPC Energy Efficiency Rating: C

Outside

Outside, the property offers a private garden with a delightful patio area, perfect for al fresco dining or relaxing in the sunshine. A garage and parking space provide ample room for multiple vehicles, ensuring both convenience and security for residents. The outdoor space is thoughtfully designed to offer a serene setting for outdoor activities, whether hosting gatherings or simply enjoying a quiet morning coffee. With a well-manicured garden adding to the property's overall charm, this home truly exemplifies the perfect blend of indoor and outdoor living. Don't miss the opportunity to call this beautiful property your own, where modern comforts meet tranquil outdoor surroundings, creating an ideal setting for creating lasting memories.

Location

Old Portsmouth has a fascinating blend of character properties and Oyster Mews is conveniently located by The Camber, Portsmouth's oldest commercial fishing port, to enjoy the amenities and recreational interests in the area including Portsmouth Cathedral, The Round and Square Towers. Nearby are Portsmouth Hot Walls, where there are a range of small art studios and a waterfront cafe, plus local restaurants and pubs. Portsmouth Harbour Railway Station, Southsea seafront and Gunwharf Quays are all within an easy reach as is Portsmouth Historic Dockyard with its wealth of maritime history. The property is also well-placed for some of the areas most highly regarded private schools including Portsmouth Grammar, Girls High School and Mayville High School and there are good road links to London, Southampton and Chichester nearby.





Henry Adams – Emsworth

Henry Adams LLP, 15 North Street, Emsworth – PO10 7BY

01243 377773

emsworth@henryadams.co.uk

www.henryadams.co.uk/

Agents Note – Our particulars are for guidance only and are intended to give a fair overall summary of the property. They do not form part of any contract or offer, and should not be relied upon as a statement or representation of fact. Measurements, areas and distances are approximate only. Photographs may include lifestyle shots and pictures of local views. No undertaking is given as to the structural condition of the property, or any necessary consents or the operating ability or efficiency of any service, system or appliance. Please ask if you would like further information, especially before you travel to the property.